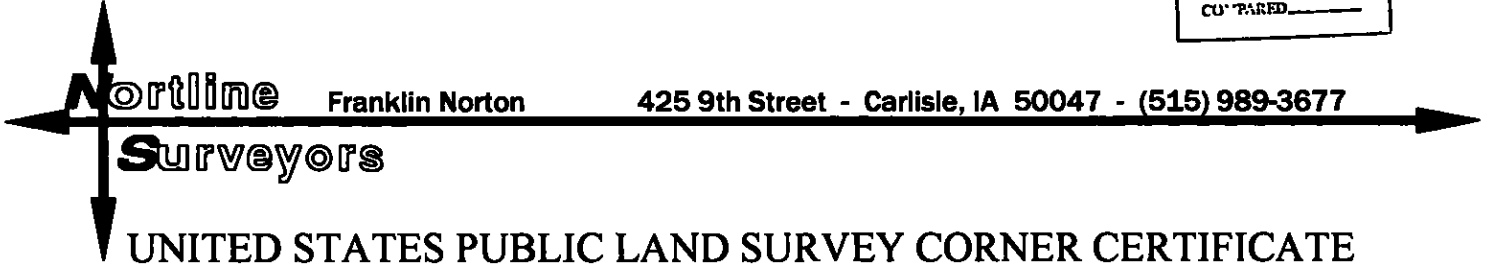


MICHELLE UTSLER. COUNTY RECORDER
MADISON IOWA

COMPUTER	✓
COUNTER	✓
CHECKED	_____



UNITED STATES PUBLIC LAND SURVEY CORNER CERTIFICATE OF

Land Survey Monuments situated in Section 29, Township 75, Range 26, of the Fifth Principal Meridian, MADISON County, Iowa. Previously recorded in N/A in County Recorder's Office. (book, page, document number, etc.)

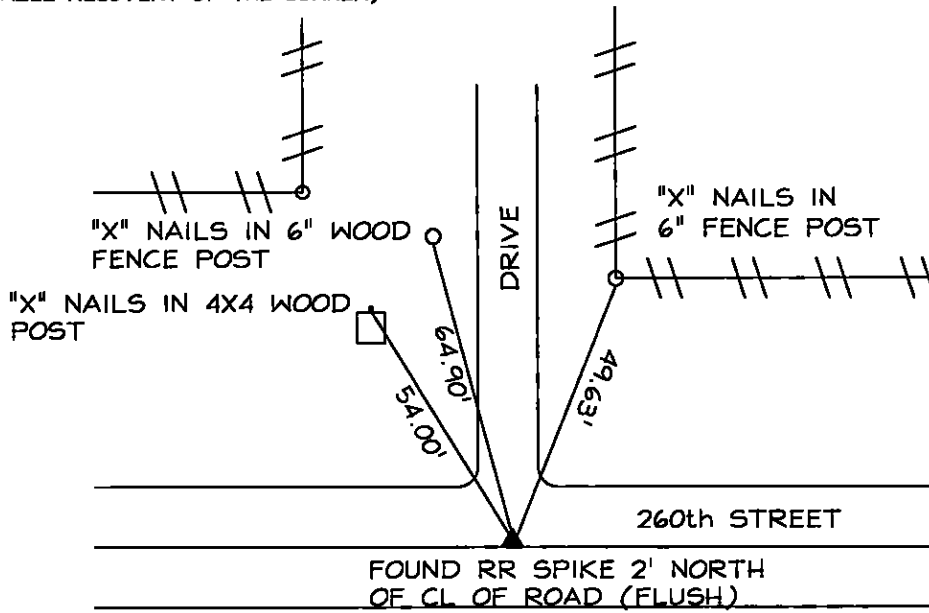
(Show reason for preparing this certificate, the evidence, and detailed procedures used in establishing the corner positions and monumentation found or placed.)

Monument Description and Remarks:

FOUND RAIL ROAD SPIKE WITH NO CERTIFICATE ON FILE

PLAN - VIEW

(SHOW A MINIMUM OF THREE REFERENCE TIES TO DURABLE PHYSICAL OBJECTS, RELEVANT MONUMENTS AND PHYSICAL CONDITIONS THAT WILL ENABLE RECOVERY OF THE CORNER)



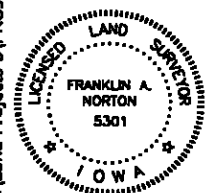
P:\LAND PROJECTS\31-PROJECTS\CC03001\CC03091\dwg\CC03091\CORNER CERTS.dwg, Model, 4/25/2006 9:05:04 AM, asmita, 147-5625

HEREBY CERTIFY THAT THE SURVEY WORK WAS COMPLETED AND THIS LAND SURVEYING DOCUMENT WAS PREPARED BY ME OR UNDER MY DIRECT PERSONAL SUPERVISIONS AND THAT I AM A DULY LICENSED LAND SURVEYOR UNDER THE LAWS OF THE STATE OF IOWA.

SIGNATURE

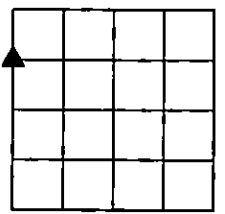
DATE

Franklin A. Norton
FRANKLIN A. NORTON
IOWA LICENSE NO. 5301
MY LICENSE RENEWAL DATE IS DEC. 31, 2006



LIST CORNERS TO BE INDEXED

CORNERS	SECTION	TWP.	RANGE
NW CORNER SW 1/4 NW 1/4	29	75	26



SECTION 29