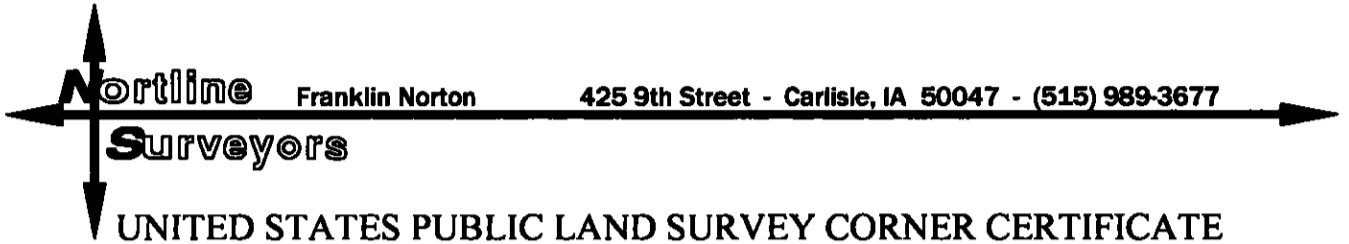


MICHELLE UTSLER, COUNTY RECORDER  
MADISON IOWA

COMPUTER	<input checked="" type="checkbox"/>
RECORDED	<input checked="" type="checkbox"/>
COMPARED	<input type="checkbox"/>



### UNITED STATES PUBLIC LAND SURVEY CORNER CERTIFICATE OF

Land Survey Monuments situated in Section 20, Township 75,  
Range 26, of the Fifth Principal Meridian, MADISON County, Iowa.  
Previously recorded in N/A in County Recorder's Office.  
(book, page, document number, etc.)

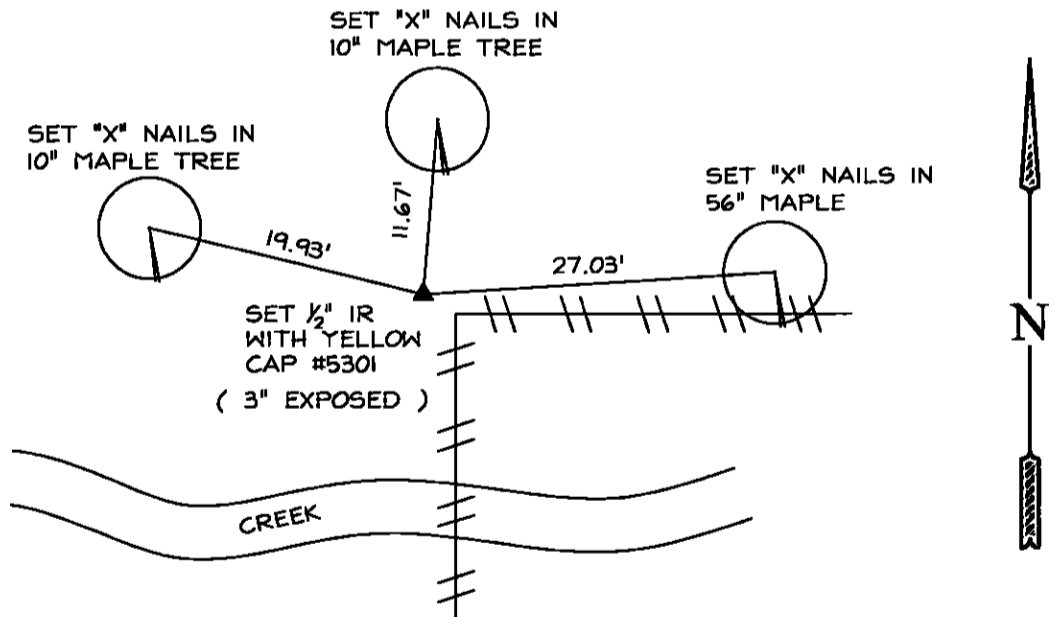
(Show reason for preparing this certificate, the evidence, and detailed procedures used in establishing the corner positions and monumentation found or placed.)

Monument Description and Remarks:

SET 1/2" IR WITH YELLOW CAP #5301 ESTABLISHED WITH A BOUNDARY SURVEY

#### PLAN - VIEW

(SHOW A MINIMUM OF THREE REFERENCE TIES TO DURABLE PHYSICAL OBJECTS, RELEVANT MONUMENTS AND PHYSICAL CONDITIONS THAT WILL ENABLE RECOVERY OF THE CORNER)



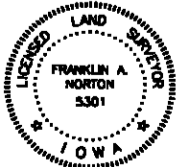
I HEREBY CERTIFY THAT THE SURVEY WORK WAS COMPLETED AND THIS LAND SURVEYING DOCUMENT WAS PREPARED BY ME OR UNDER MY DIRECT PERSONAL SUPERVISIONS AND THAT I AM A DULY LICENSED LAND SURVEYOR UNDER THE LAWS OF THE STATE OF IOWA.

SIGNATURE

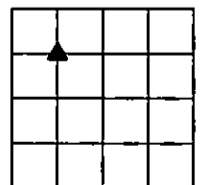
DATE

*Franklin A. Norton* 5/11/2006

FRANKLIN A. NORTON  
IOWA LICENSE NO. 5301  
MY LICENSE RENEWAL DATE IS DEC. 31, 2006



LIST CORNERS TO BE INDEXED			
CORNERS	SECTION	TWP.	RANGE
NW CORNER	20	75	26
SE 1/4 NW 1/4			



SECTION 20