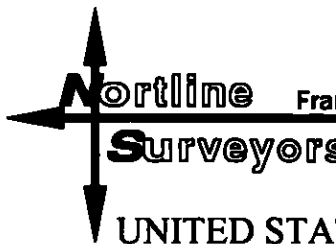


MICHELLE UTSLER, COUNTY RECORDER
MADISON IOWA

COMPUTER	✓
RECORDED	✓
COPY FILED	


Northline Franklin Norton 425 9th Street - Carlisle, IA 50047 - (515) 989-3677
Surveyors

UNITED STATES PUBLIC LAND SURVEY CORNER CERTIFICATE

Land Survey Monuments situated in Section 20, Township 75,
 Range 26, of the Fifth Principal Meridian, MADISON County, Iowa.
 Previously recorded in N/A in County Recorder's Office.
(book, page, document number, etc.)

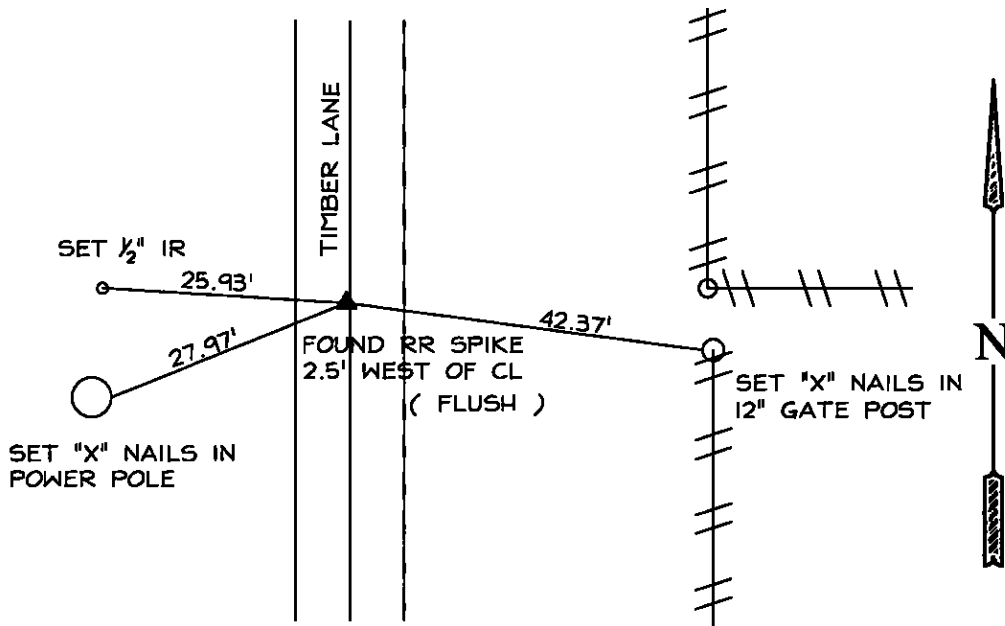
(Show reason for preparing this certificate, the evidence, and detailed procedures used in establishing the corner positions and monumentation found or placed.)

Monument Description and Remarks:

FOUND RR SPIKE 2.5' WEST OF CENTER LINE WITH NO CERTIFICATE ON FILE

PLAN -VIEW

(SHOW A MINIMUM OF THREE REFERENCE TIES TO DURABLE PHYSICAL OBJECTS, RELEVANT MONUMENTS AND PHYSICAL CONDITIONS THAT WILL ENABLE RECOVERY OF THE CORNER)



I HEREBY CERTIFY THAT THE SURVEY WORK WAS COMPLETED AND THIS LAND SURVEYING DOCUMENT WAS PREPARED BY ME OR UNDER MY DIRECT PERSONAL SUPERVISIONS AND THAT I AM A DULY LICENSED LAND SURVEYOR UNDER THE LAWS OF THE STATE OF IOWA.

SIGNATURE

DATE

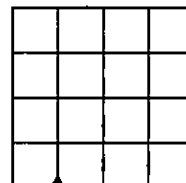
Franklin A. Norton 5/18/2006

FRANKLIN A. NORTON
 IOWA LICENSE NO. 5301
 MY LICENSE RENEWAL DATE IS DEC. 31, 2006



LIST CORNERS TO BE INDEXED

CORNERS	SECTION	TWP.	RANGE
SW CORNER SE 1/4 SW 1/4	20	75	26



SECTION 20