

MICHELLE UTSLER, COUNTY RECORDER  
MADISON IOWA

RETURN TO K&F MAPPING, INC., P.O. BOX 143, ADEL, IA 50003

SL19-00

# UNITED STATES PUBLIC LAND SURVEY CORNER CERTIFICATE OF

Land Survey Monuments situated in Section 10, Township 77 North, Range 29 West, of the Fifth Principal Meridian, Madison County, Iowa.

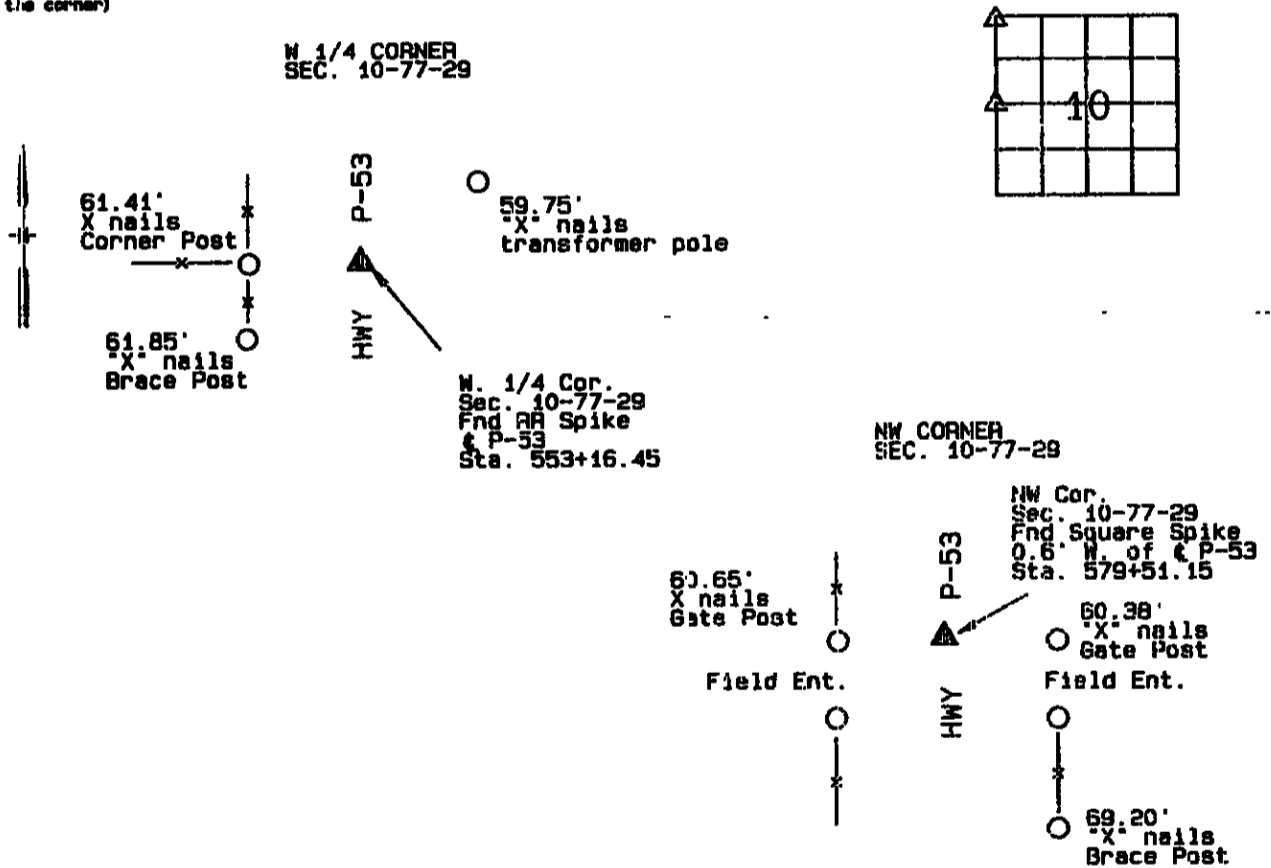
Previously recorded in \_\_\_\_\_ in County Recorder's Office.  
(Book, page, document number, ect.)

(Show reason for preparing this certificate, the evidence and detailed procedures used in establishing the corner positions and found or placed.)

Monument Description and Remarks: Monuments were found and verified with existing Madison County Engineers Records.

## PLAN - VIEW

(Show a minimum of three reference ties to durable physical objects, relevant monuments and physical conditions that will enable recovery of the corner)



I hereby certify that this land surveying document was prepared and the related survey work was performed by me or under my direct personal supervision and that I am a duly licensed Land Surveyor under the laws of the State of Iowa.

Signed James V. Raith  
James V. Raith, L.S.  
Iowa license No. 5899

Date 4-28-06

My license renewal date is December 31, 2007



### List Corners to be Indexed

Corners	Section	Twp.	Range
W1/4 Cor.	10	77	29
E1/4 Cor.	9	77	29
NW Cor.	10	77	29
NE Cor.	9	77	29
SE Cor.	4	77	29
SW Cor.	3	77	29