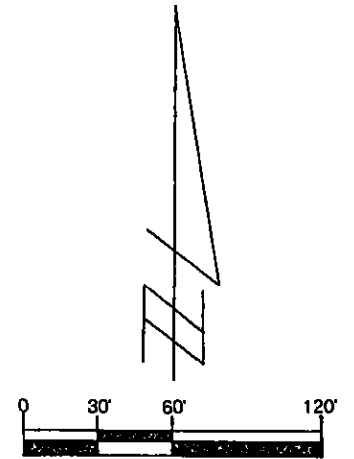
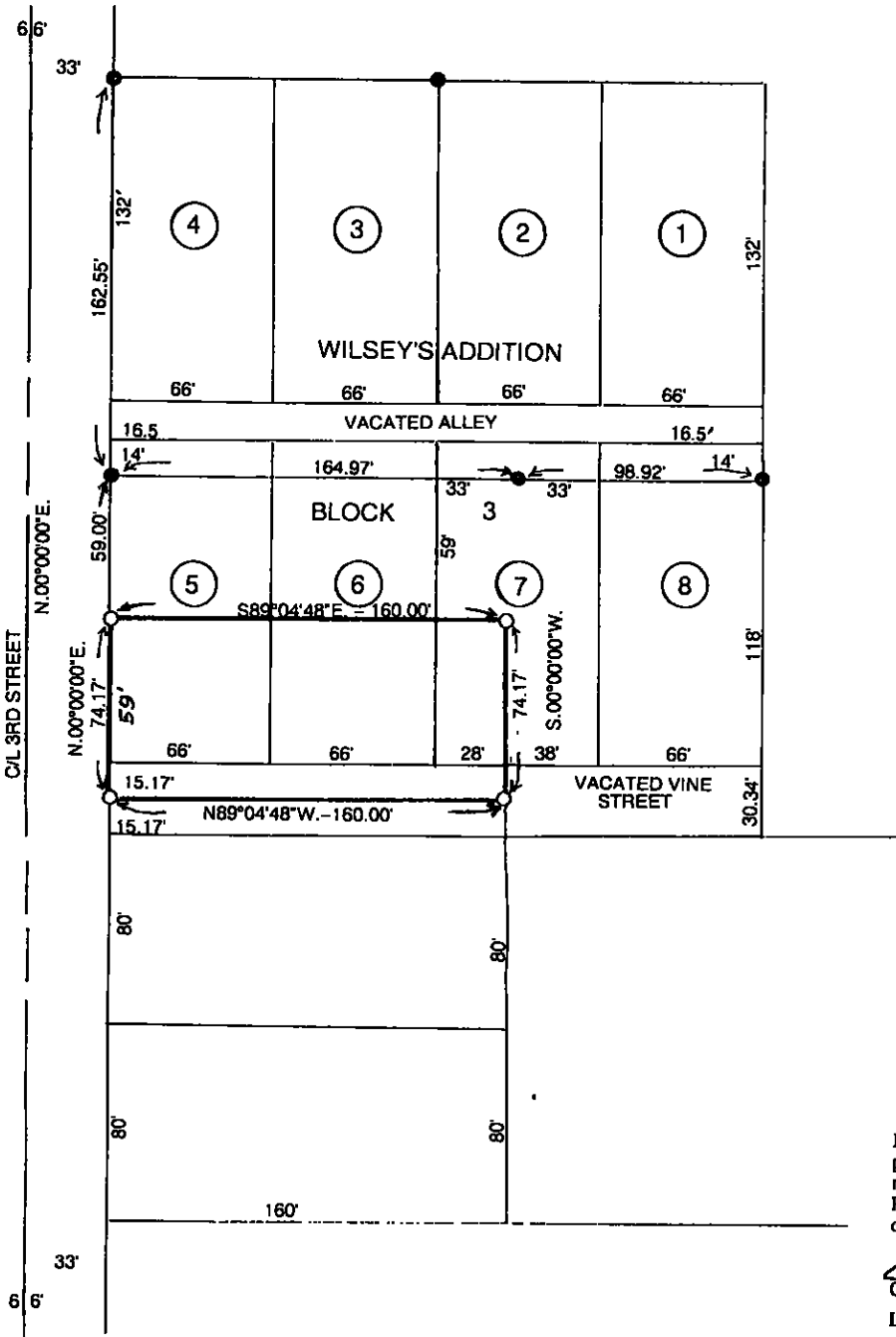


MICHELLE UTSLER. COUNTY RECORDER
MADISON IOWA

COMPUTER	<input checked="" type="checkbox"/>
RECORDED	<input checked="" type="checkbox"/>
COMPALED	<input type="checkbox"/>

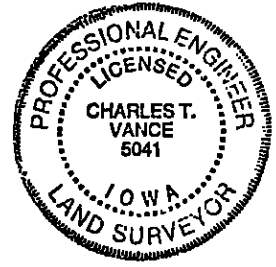
VANCE & HOCHSTETLER, P.C. CONSULTING ENGINEERS, WINTERSET, IOWA (515) 462-3995
 CHARLES T. VANCE, 110 WEST GREEN ST., WINTERSET, IOWA 50273-1533
 JAMES M HOCHSTETLER, 110 WEST GREEN ST., WINTERSET, IOWA 50273 - 1533

Plat of Survey in Lots 5, 6, and 7, in Block 3 and in Vacated Vine Street lying adjacent thereto all in Wilsey's Addition to the city of Winterset, Madison County, Iowa. Owned by: Catherine A. Croft



LEGEND

- SET C.I.R. #5041
- FOUND C.I.R. #6808



I hereby certify that this engineering or land surveying document was prepared and the related survey work was performed by me or under my direct personal supervision and that I am a duly licensed Professional Engineer and Land Surveyor under the laws of the State of Iowa.

Charles T. Vance 11 May 2006
Charles T. Vance Date

License number 5041
My license renewal date is December 31, 2007.

Pages or sheets covered by this seal: one

LEGAL DESCRIPTION:

The South 59 feet of Lots 5 and 6, and the West 28 feet of the South 59 feet of Lot 7, in Block 3, and the North half of the West 160 feet of Vacated Vine Street lying adjacent to and Southerly of said Lots, all in Wilsey's Addition to the City of Winterset, Madison County, Iowa.