

COMPUTER	✓
RECORDED	✓
COMPARED	_____

MICHELLE UTSLER, COUNTY RECORDER
MADISON IOWA

RETURN TO : BOLDMAN LAND SURVEYING, P.C., BOX 66, WINTERSET, IA 50273 515-462-9242

UNITED STATES PUBLIC LAND SURVEY CORNER CERTIFICATE

OF

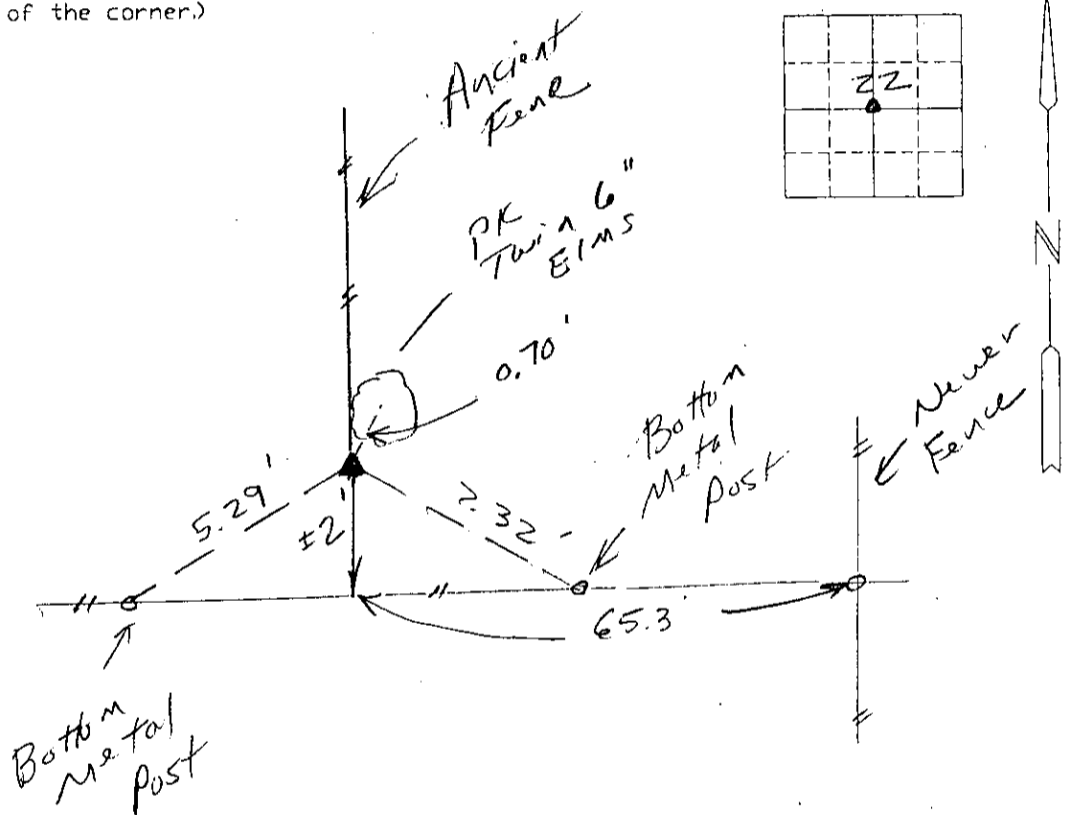
Land Survey Monuments situated in Section 22, Township 76 N, Range _____, County, Iowa
27 W, of the Fifth Principal Meridian, Madison
 Previously recorded in None In County Recorder's Office.
 (book, page, document number, etc.)

(show reason for preparing this certificate, the evidence and detailed procedures used in establishing the corner positions and monumentation found or placed.)

Monument Description and Remarks: Found 6"x8" Lime stone in line with old fence north. Stone is ± 65'w of inter. of newer N-S, E-W fence post.

PLAN-VIEW

(Show a minimum of three reference ties to durable physical objects, relevant monuments and physical conditions that will enable recovery of the corner.)



I hereby certify that the survey work was completed and this certificate was prepared by me or under my direct personal supervision and that I am a duly Licensed Land Surveyor under the laws of the State of Iowa

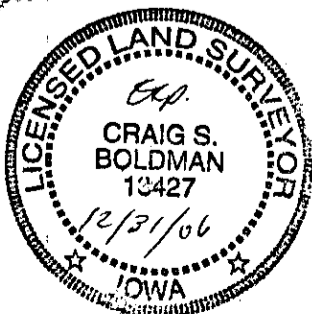
Signature: Craig S. Boldman
 Craig S. Boldman

Date: 3/23/06 Reg. No. 13427

List Corners to be Indexed

Corners	Section	Twp	Range
Center	22	76	27

SEAL



file 06019