

| | |
|----------|-------------------------------------|
| COMPUTER | <input checked="" type="checkbox"/> |
| RECORDED | <input checked="" type="checkbox"/> |
| COMPARED | <input type="checkbox"/> |

MICHELLE UTSLER, COUNTY RECORDER
MADISON IOWA

RETURN TO : BOLDMAN LAND SURVEYING, P.C., BOX 66, WINTERSET, IA 50273 515-462-9242
UNITED STATES PUBLIC LAND SURVEY CORNER CERTIFICATE

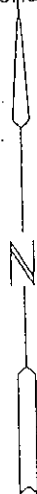
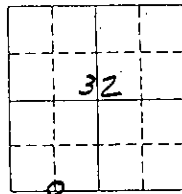
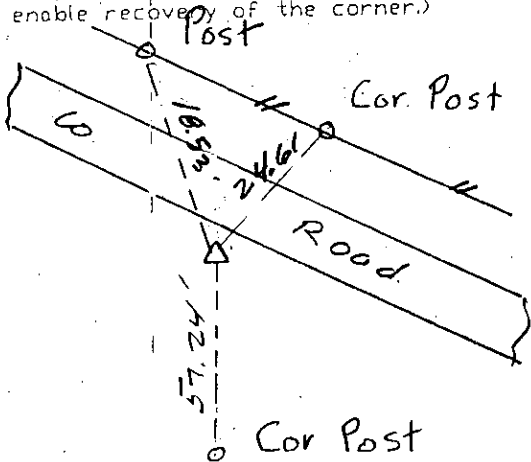
OF
Land Survey Monuments situated in Section 32 Township 76 Range
29 of the Fifth Principal Meridian Madison County, Iowa
Previously recorded in None found In County Recorder's Office.
(book, page, document number, etc.)

(show reason for preparing this certificate, the evidence and detailed procedures used in establishing the corner positions and monumentation found or placed.)

Monument Description and Remarks: Using previously recorded monuments
Set monument equidistant between SW and S 1/4
corners.
All tied to pk nail and orange washer (NW) unless noted otherwise

PLAN-VIEW

(Show a minimum of three reference ties to durable physical objects, relevant monuments and physical conditions that will enable recovery of the corner.)

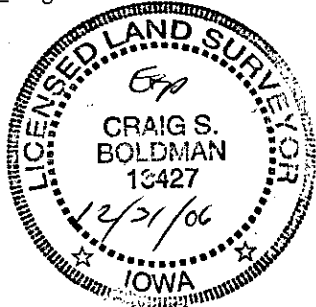


S 1/4 SW Corner - Set 1/2" cip #13427

I hereby certify that the survey work was completed and this certificate was prepared by me or under my direct personal supervision and that I am a duly Licensed Land Surveyor under the laws of the State of Iowa

Signature: Craig S. Boldman
Craig S. Boldman

Date: 3/23/06 Reg. No. 13427



SEAL

List Corners to be Indexed

| Corners | Section | Twp | Range |
|---------|---------|-----|-------|
|---------|---------|-----|-------|

| | | | |
|--------------|----|----|----|
| S 1/4 SW Cor | 32 | 76 | 29 |
|--------------|----|----|----|

Job # 06013