

MICHELLE UTSLER, COUNTY RECORDER  
MADISON IOWA

COMPUTER	<input checked="" type="checkbox"/>
RECORDED	<input checked="" type="checkbox"/>
COMPARED	<input type="checkbox"/>

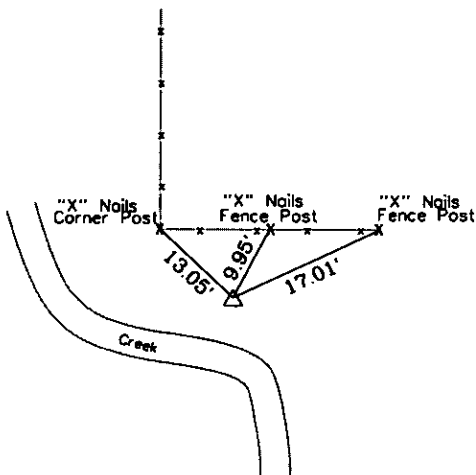
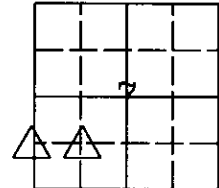
# UNITED STATES PUBLIC LAND SURVEY CORNER CERTIFICATE

LAND SURVEY MONUMENTS SITUATED IN SECTION 7 of 76, TOWNSHIP 76, RANGE 27, of the Fifth Principal Meridian, Madison County, Iowa.

Monument Description & Remarks: See Attachment

Reference Survey Recorded at BK. 2004 Pg. 5232

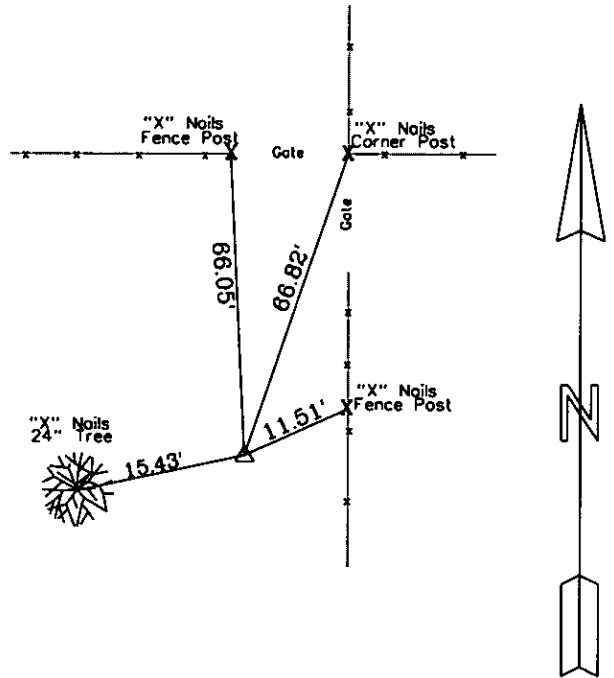
## PLAN VIEW



South 1/16 Cor.

Section 7-76-27

Set 1/2" Rebar With Yellow Cap  
# 14674



South West 1/16 Cor.

Section 7-76-27

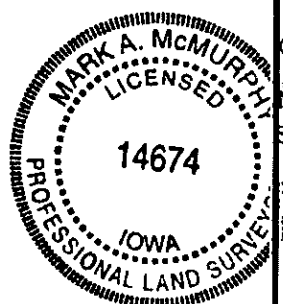
Set 1/2" Rebar With Yellow Cap  
# 14674

I HEREBY CERTIFY THAT THIS SURVEYING DOCUMENT WAS PREPARED AND THE RELATED WORK WAS PERFORMED BY ME OR UNDER MY DIRECT PERSONAL SUPERVISION, AND THAT I AM A DULY LICENSED PROFESSIONAL LAND SURVEYOR UNDER THE LAWS OF THE STATE OF IOWA.

*Mark A. McMURPHY* 3-17-06  
MARK A. MCMURPHY, IOWA LIC. NO 14674 DATE

MY LICENSE RENEWAL DATE IS DECEMBER 31, 2006.

ADDITIONAL PAGES CERTIFIED (NONE UNLESS INDICATED HERE)



Corners to be Indexed:			
Corner	Section	Twp	Range
North 1/16	7	76	27
1/16	7	76	27

## Section Corner Descriptions

### SW 1/16 Corner 7-76-27

Probed and excavated in an around vicinity of corner. No ties were available. Set corner at mid point on line between 1/16 corners directly north and south and those to the east and west of this. The existing east-west fence was 66 feet north of this mid-point. The landowner Daniel K. Ryner stated that the fence had never been surveyed in place. In light of the consistency of the other measurements in this section, Mr. Ryner's statement, and the 66 foot difference I reset the corner at the intersection.

### South 1/16 Corner on West Line 7-76-27

Probed and excavated in and around vicinity of corner. No ties were available. Set corner at midpoint (On the township line) between the SW Corner of 7-76-27 and West  $\frac{1}{4}$  corner of 7-76-27. Corner was reestablished approximately 3  $\frac{1}{2}$  feet north of the extension of an existing east west fence line, was approximately 18 feet south of a 2<sup>nd</sup> east-west fence line and was approximately 7 feet east of an existing north-south dilapidated fence line.