

COMPUTER
RECORDED
COMPARED

MICHELLE UTSLER, COUNTY RECORDER
MADISON IOWA

ABACI CONSULTING, 101 NORTH CIRCLE DR. GRIMES, IOWA 50111, PH(515)986-5048

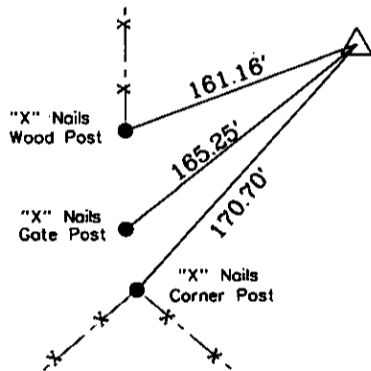
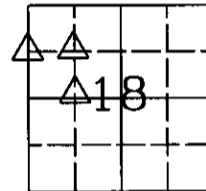
UNITED STATES PUBLIC LAND SURVEY CORNER CERTIFICATE

of
LAND SURVEY MONUMENTS SITUATED IN SECTION 18, TOWNSHIP 76, RANGE 27, of the Fifth Principal Meridian, Madison County, Iowa.

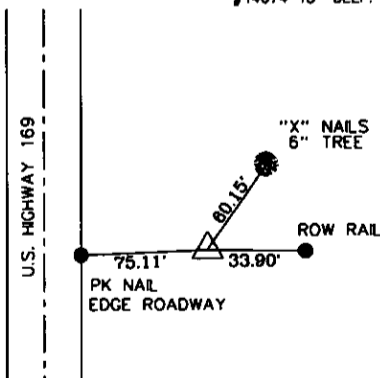
Previously recorded in See Attachment in the County Recorder's Office.

Monument Description & Remarks: See Attachment

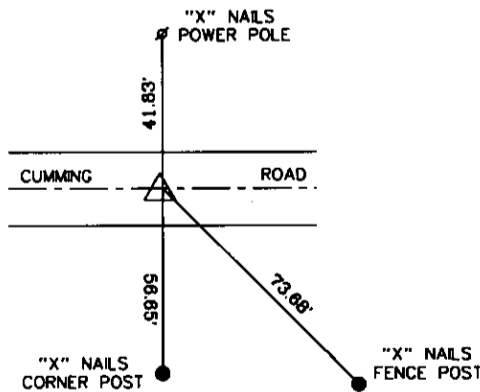
PLAN VIEW



NW 1/16 Cor. 18-76-27
SET 1/2" REBAR WITH YELLOW CAP
#14674 18" DEEP.



North 1/16 Cor. 18-76-27
SET 1/2" REBAR WITH YELLOW CAP
#14674



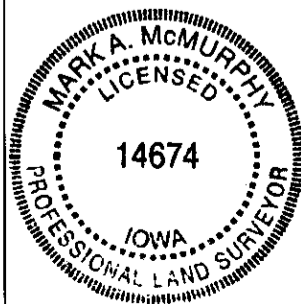
Center W. 1/16 Cor. 18-76-27
SET PK NAIL IN ROADWAY

I HEREBY CERTIFY THAT THIS SURVEYING DOCUMENT WAS PREPARED AND THE RELATED WORK WAS PERFORMED BY ME OR UNDER MY DIRECT PERSONAL SUPERVISION, AND THAT I AM A DULY LICENSED PROFESSIONAL LAND SURVEYOR UNDER THE LAWS OF THE STATE OF IOWA.

Mark A. McMurry 3-17-06
MARK A. MCMURPHY, IOWA LIC. NO 14674 DATE

MY LICENSE RENEWAL DATE IS DECEMBER 31, 2006.

ADDITIONAL PAGES CERTIFIED (NONE UNLESS INDICATED HERE)



Corners to be Indexed:			
Corner	Section	Twp	Range
NW 1/16	18	78	27
N 1/16	18	78	27
Ctr. West 1/16	18	78	27

Section Corner Descriptions

North 1/16 Corner 18-76-27

Probed and excavated in and around vicinity of corner. No ties were available. Set point on line between the west $\frac{1}{4}$ corner of 18-76-27 and the northwest corner of 18-76-27 at the intersection with the line from the northwest $\frac{1}{16}$ corner of 18-76-27 through an IDOT I-Rail located approximately 33 feet east. Said line also was monumented by an existing farm fence. Rose Moorehead (landowner to south) said existing fence was along property line.

Center-West 1/16 Corner 18-76-27

Searched in vicinity of corner point. No ties were available and no monument was found. Set point on line between the west $\frac{1}{4}$ corner of 18-76-27 and the center $\frac{1}{4}$ corner of 18-76-27, and at the intersection of the existing fence lines running northerly and southerly of the corner point. Said point also matched centerline of Cummings Road.

Northwest 1/16 Corner 18-76-27

Probed and excavated in and around vicinity of corner. No ties were available. Set point at the intersection of the extension of the E-W fence line, with a line from the west $\frac{1}{16}$ corner 18-76-27 and the center west $\frac{1}{16}$ corner 18-76-27.