

COMPUTER	<input checked="" type="checkbox"/>
RECORDED	<input checked="" type="checkbox"/>
COMPARED	<input type="checkbox"/>

MICHELLE UTSLER, COUNTY RECORDER  
MADISON IOWA

ABACI CONSULTING, 101 NORTH CIRCLE DR., GRIMES, IOWA 50111, PH(515)986-5048

### UNITED STATES PUBLIC LAND SURVEY CORNER CERTIFICATE

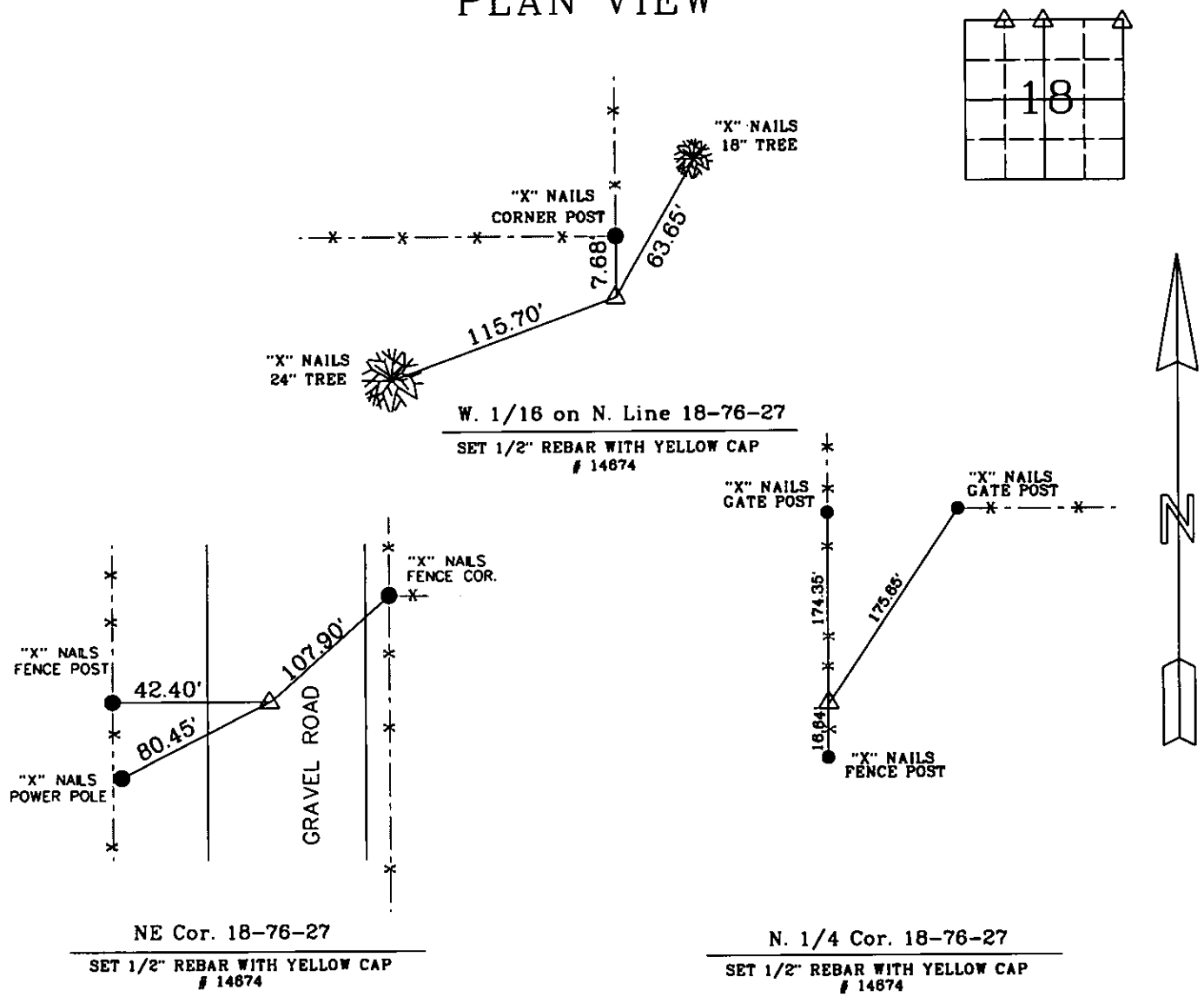
of  
LAND SURVEY MONUMENTS SITUATED IN SECTION 18, TOWNSHIP 76, RANGE 27, of the Fifth Principal Meridian, Madison County, Iowa.

Previously recorded in See attachment in the County Recorder's Office.

Monument Description & Remarks: See attachment

Reference Survey Recorded at BK. 2004 Pg. 5332

### PLAN VIEW



I HEREBY CERTIFY THAT THIS SURVEYING DOCUMENT WAS PREPARED AND THE RELATED WORK WAS PERFORMED BY ME OR UNDER MY DIRECT PERSONAL SUPERVISION, AND THAT I AM A DULY LICENSED PROFESSIONAL LAND SURVEYOR UNDER THE LAWS OF THE STATE OF IOWA.

*Mark A. McMURPHY* 3-17-06  
MARK A. MCMURPHY, IOWA LIC. NO. 14674 DATE

MY LICENSE RENEWAL DATE IS DECEMBER 31, 2006.

ADDITIONAL PAGES CERTIFIED (NONE UNLESS INDICATED HERE)



Corners to be Indexed:

Corner	Section	Twp	Range
W. 1/4 on N. Line	18	76	27
NE Cor.	18	76	27
N 1/4 Cor.	18	76	27

## Section Corner Descriptions

### NE Corner 18-76-27

Monument was obliterated (culvert beneath had been recently installed per call to County Engineers Office). Set corner on line between East  $\frac{1}{4}$  corner and  $\frac{1}{2}$ " bolt found at station 32+59 on North River Trail. Used pin found on ROW and south line of Parcel A BK 2, PG 504. Also, see road plan no. 5-65 County Engineers Office.

### North $\frac{1}{4}$ Corner 18-76-27

Probed and excavated in and around vicinity of corner. No ties were available and no monument was found. Set point on line between NE corner and NW corner of section 18 at intersect with line between center  $\frac{1}{4}$  corners of 7 and 18 and in existing N-S fence line. Corner was established at 2798.38' measured vs. 2799.06' Original Govt. survey and 2801.04' from 1876 survey by Patterson.

### West 1/16 Corner on North line 18-76-27

Probed and excavated in and around vicinity of corner. No ties were available. Set corner on E-W line between N1/4 corner and NW corner of section 18 in line with exiting N-S fence approximately 8' south of corner post.