

COMPUTER
RECORDED
COMPARED

MICHELLE UTSLER, COUNTY RECORDER
MADISON IOWA

VANCE & HOCHSTETLER, P.C., CONSULTING ENGINEERS, WINTERSSET, IOWA (515) 462-3995
06-195 CHARLES T. VANCE, 110 West Green St., Winterset, Iowa, 50273
JAMES M HOCHSTETLER, 110 West Green St., Winterset, Iowa 50273

UNITED STATES PUBLIC LAND SURVEY CORNER CERTIFICATE

Land Survey Monuments situated in Section 26 OF 26 Township 75N Range 27W of the Fifth Principal Meridian, MADISON County, Iowa.
Previously recorded in _____ in County Recorder's Office.
(book, page, document number, etc.)

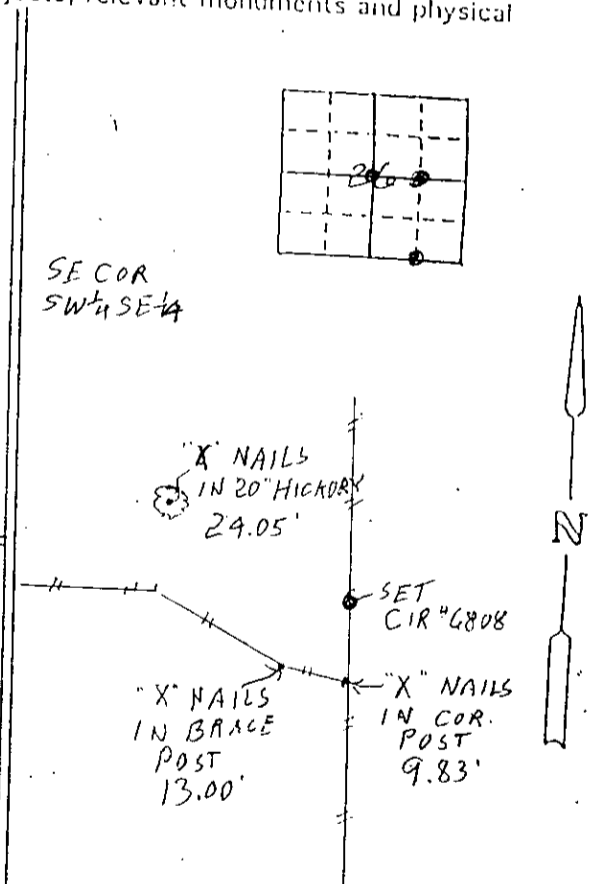
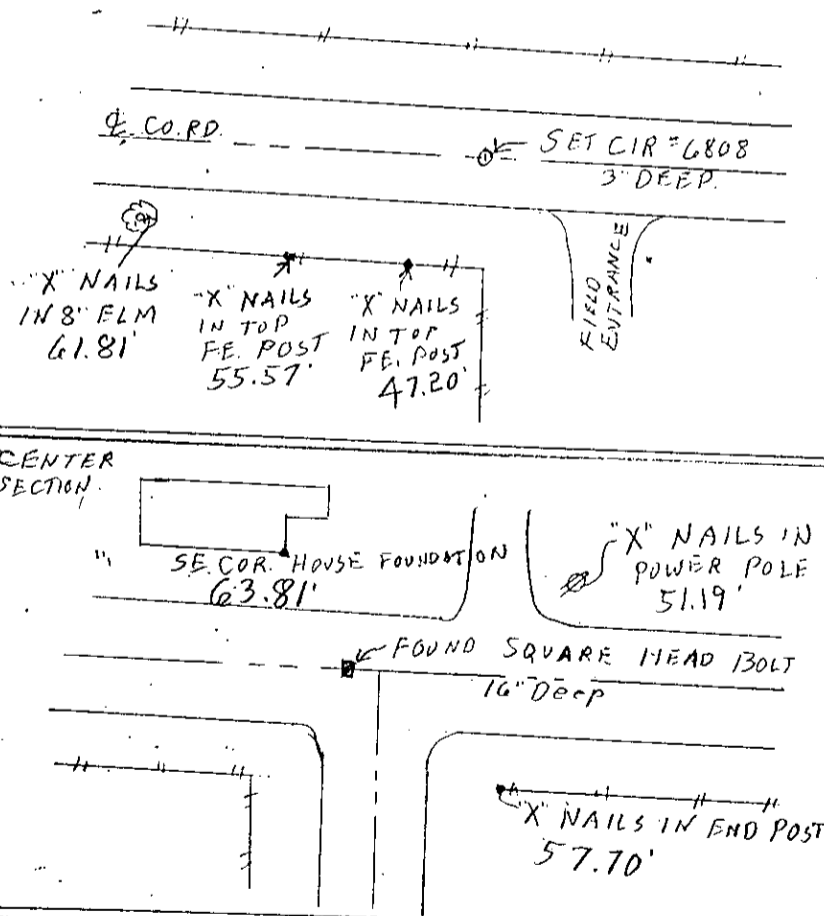
(Show reason for preparing this certificate, the evidence and detailed procedures used in establishing the corner positions and monumentation found or placed.)

Monument Description and Remarks: NE COR NW 1/4 SE 1/4 - Set yellow CIR #6808 at Centerline of County Road right-of-way in line with property line fence south.
SE COR SW 1/4 SE 1/4 - Set yellow CIR #6808 in North & South property line fence in line with projection of property line fence from West. Could not find stone previously found.
Center - Found Square headed bolt 1 1/2" deep as shown on old road plans.

PLAN - VIEW

(Show a minimum of three reference ties to durable physical objects, relevant monuments and physical conditions that will enable recovery of the corner.)

NE COR.
NW 1/4 SE 1/4.



List Corners to be Indexed

Corners	Section	Twp	Range
NE COR NW 1/4 SE 1/4	26	75N	27W
SE COR SW 1/4 SE 1/4	26	75N	27W
CENTER	26	75N	27W

I hereby certify that this land surveying document was prepared and the related survey work was performed by me or under my direct personal supervision and that I am a duly licensed Land Surveyor under the laws of the State of Iowa.

J.M. Hochstetler
J.M. HOCHSTETLER
License number 6808 Date 4/11/06
My license renewal date is December 31, 2007
Pages or sheets covered by this seal: 1

