

COMPUTER	<input checked="" type="checkbox"/>
RECORDED	<input checked="" type="checkbox"/>
COMPARED	<input type="checkbox"/>

MICHELLE UTSLER, COUNTY RECORDER
MADISON IOWA

RETURN TO : BOLDMAN LAND SURVEYING, P.C., BOX 66, WINTERSSET, IA 50273 515-462-9242
UNITED STATES PUBLIC LAND SURVEY CORNER CERTIFICATE

OF

Land Survey Monuments situated in Section 21 Township 74 Range 29, of the Fifth Principal Meridian, MADISON County, Iowa
Previously recorded in None found In County Recorder's Office.
(book, page, document number, etc.)

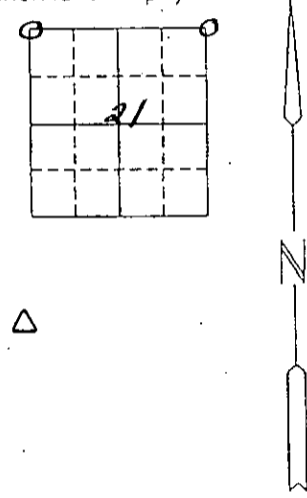
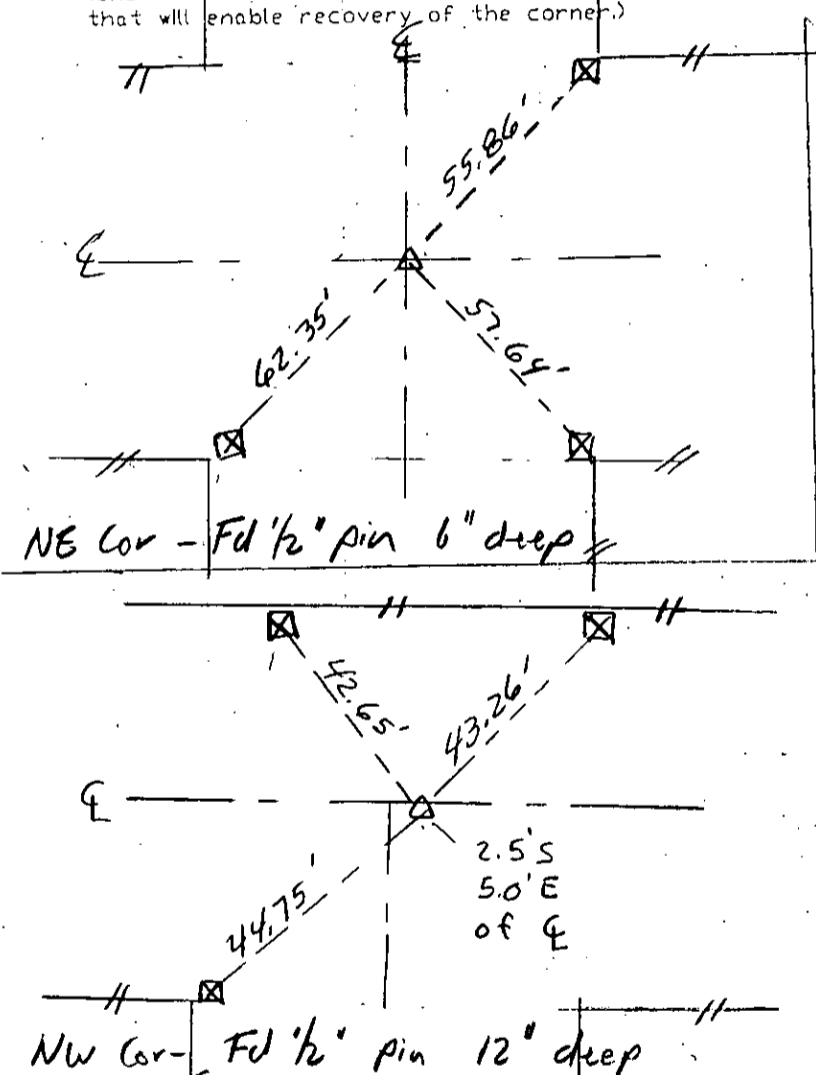
(show reason for preparing this certificate, the evidence and detailed procedures used in establishing the corner positions and monumentation found or placed.)

Monument Description and Remarks: Retied from County Engineers
Notes. No certificate found.

All tied to pk nail and orange washer (NW) unless noted otherwise

PLAN-VIEW

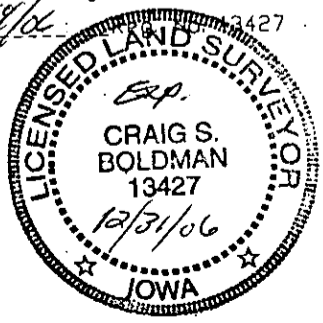
(Show a minimum of three reference ties to durable physical objects, relevant monuments and physical conditions that will enable recovery of the corner.)



I hereby certify that the survey work was completed and this certificate was prepared by me or under my direct personal supervision and that I am a duly Licensed Land Surveyor under the laws of the State of Iowa

Signature: Craig S. Boldman
Craig S. Boldman

Date: 4/25/06



List Corners to be Indexed

Corners	Section	Twp	Range
NE	21	74	29
NW	21	74	29

SEAL

file: 06028