

MICHELLE UTSLER, COUNTY RECORDER
 MADISON IOWA

COMPUTER	<input checked="" type="checkbox"/>
RECORDED	<input checked="" type="checkbox"/>
COMPARED	<input type="checkbox"/>

RETURN TO SNYDER & ASSOCIATES, INC. 2727 SW SNYDER ROAD, ANKENY, IOWA 50023 (888) 964-2020

UNITED STATES PUBLIC LAND SURVEY CORNER CERTIFICATE OF

Land Survey Monuments situated in Section 2, Township 77, Range 26, of the Fifth Principal Meridian, MADISON, County, Iowa. Previously recorded in (SEE DESCRIPTION BELOW) in County Recorder's Office. (book, page, document number, ect.)

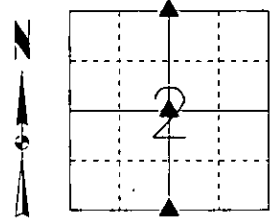
(Show reason for preparing this certificate, the evidence and detailed procedures used in establishing the corner positions and monumentation found or placed.)

Monument Description and Remarks:

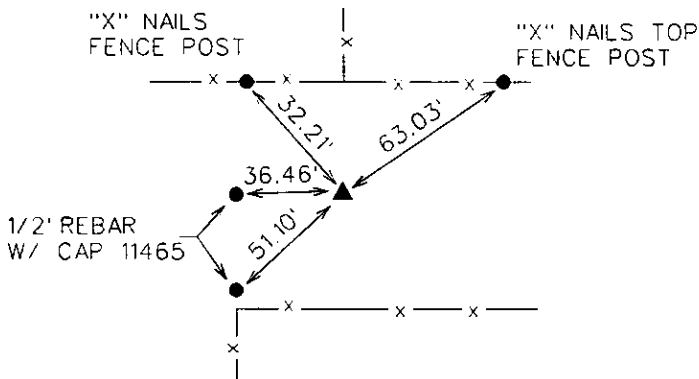
- 1) CENTER - NO RECORDED TIES FOUND - SET MONUMENT AT THE INTERSECTION OF THE E1/4 CORNER, W1/4 CORNER WITH THE N1/4 CORNER, S1/4 CORNER. SET 1/2" REBAR WITH CAP 11465.
- 2) N1/4 CORNER - FOUND MONUMENT USING RECORDED TIES IN BOOK 1, PAGE 285. RETIED MONUMENT.
- 3) S1/4 CORNER - NO TIES FOUND - SET MONUMENT AT MIDPOINT BETWEEN THE SW CORNER AND THE SE CORNER. SET 1/2" REBAR WITH CAP 11465.

Plan-View

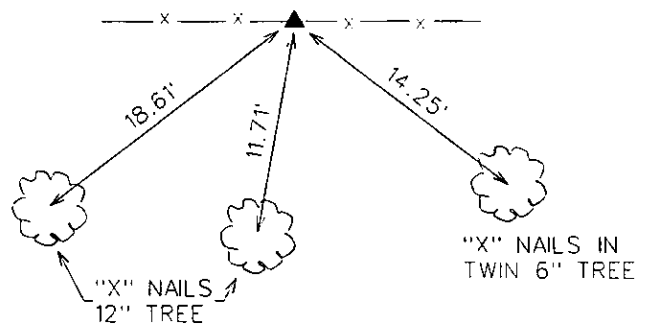
(Show a minimum of three reference ties to durable physical objects, relevant monuments and physical conditions that will enable recovery of the corner.)



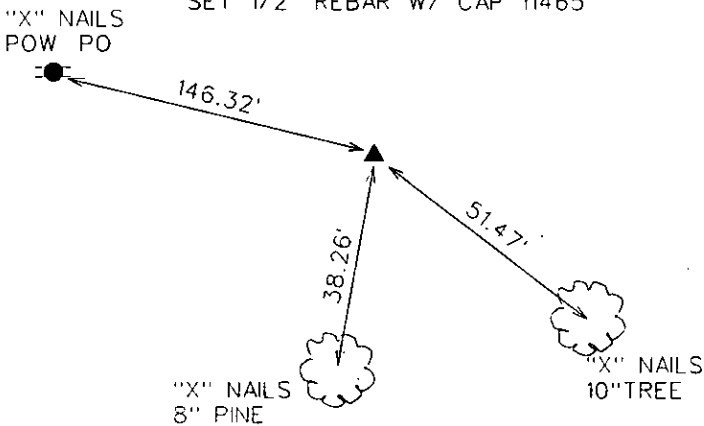
1) CENTER SECTION SET 1/2" REBAR W/ CAP 11465



2) N 1/4 CORNER FOUND 1/2" REBAR W/ CAP 5041



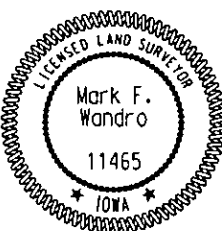
3) S 1/4 CORNER SET 1/2" REBAR W/ CAP 11465



I hereby certify that this land surveying document was prepared and the related surveying work was performed by me or under my direct supervision and that I am a duly licensed Land Surveyor under the laws of the State of Iowa.

Mark F. Wandro 1/25/06
 Mark F. Wandro, PLS Date

License Number 11465
 My License Renewal Date is December 31, 2006
 Pages or sheets covered by this seal:
 SHEET 1 OF 1



List Corners to be Indexed

Corners	Section	Twp	Range
1) CENTER SECTION	2	77	26
2) N 1/4 COR	2	77	26
S 1/4 COR	35	78	26
3) S 1/4 COR	2	77	26
N 1/4 COR	11	77	26