

MICHELLE UTSLER, COUNTY RECORDER  
MADISON IOWA

COMPUTER	<input checked="" type="checkbox"/>
RECORDED	<input checked="" type="checkbox"/>
COMPARED	<input type="checkbox"/>

RETURN TO SNYDER & ASSOCIATES, INC. 2727 SW SNYDER ROAD, ANKENY, IOWA 50023 (888) 964-2020

### UNITED STATES PUBLIC LAND SURVEY CORNER CERTIFICATE OF

Land Survey Monuments situated in Section 11, Township 77, Range 26, of the Fifth Principal Meridian, MADISON, County, Iowa. Previously recorded in N/A in County Recorder's Office.  
(book, page, document number, ect.)

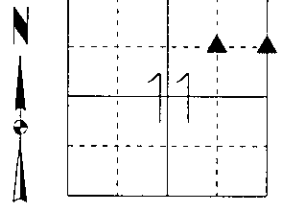
(Show reason for preparing this certificate, the evidence and detailed procedures used in establishing the corner positions and monumentation found or placed.)

Monument Description and Remarks:

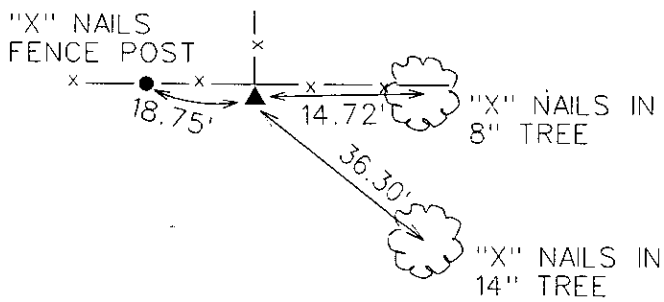
- 1) SW CORNER NE1/4 NE1/4 - NO RECORDED TIES FOUND - SET MONUMENT AT FENCE CORNER - SET 1/2" REBAR W/ CAP 11465.
- 2) SE CORNER NE1/4 NE1/4 - NO RECORDED TIES FOUND - EXISTING FENCE LINE FELL 4 FEET FROM SINGLE PROPORTION. USED FENCE LINE TO ESTABLISH CORNER. SET 1/2" REBAR W/ CAP 11465.

Plan-View

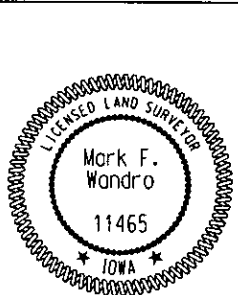
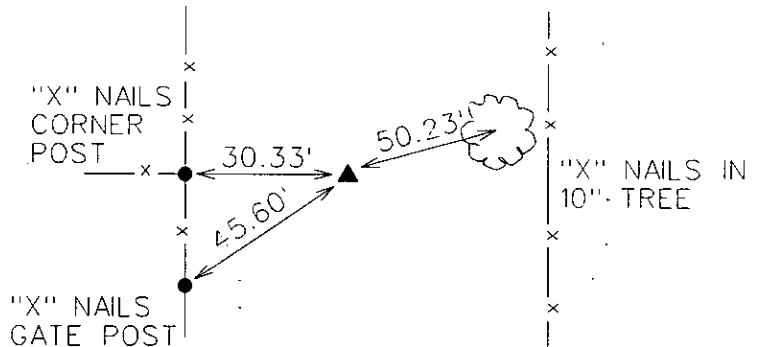
(Show a minimum of three reference ties to durable physical objects, relevant monuments and physical conditions that will enable recovery of the corner.)



1) SW CORNER NE1/4 NE1/4  
SET 1/2" REBAR W/ CAP 11465



2) SE CORNER NE1/4 NE1/4  
SET 1/2" REBAR W/ CAP 11465



I hereby certify that this land surveying document was prepared and the related surveying work was performed by me or under my direct supervision and that I am a duly licensed Land Surveyor under the laws of the State of Iowa.

*Mark F. Wandro* 1/25/06  
 Mark F. Wandro, PLS Date  
 License Number 11465  
 My License Renewal Date is December 31, 2006  
 Pages or sheets covered by this seal:  
 SHEET 1 OF 1

List Corners to be Indexed

Corners	Section	Twp	Range
1) SW COR NE1/4 NE1/4	11	77	26
2) SE COR NE1/4 NE1/4	11	77	26
SW COR NW1/4 NW1/4	12	77	26