



MICHELLE UTSLER, COUNTY RECORDER  
MADISON IOWA

COMPUTER ✓  
RECORDED ✓  
COMPARED \_\_\_\_\_

RETURN TO SNYDER & ASSOCIATES, INC. 2727 SW SNYDER ROAD, ANKENY, IOWA 50023 (888) 964-2020

### UNITED STATES PUBLIC LAND SURVEY CORNER CERTIFICATE OF

Land Survey Monuments situated in Section 11, Township 77, Range 26, of the Fifth Principal Meridian, MADISON, County, Iowa. Previously recorded in \_\_\_\_\_ (SEE DESCRIPTION BELOW) in County Recorder's Office. (book, page, document number, ect.)

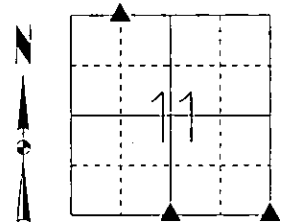
(Show reason for preparing this certificate, the evidence and detailed procedures used in establishing the corner positions and monumentation found or placed.)

#### Monument Description and Remarks:

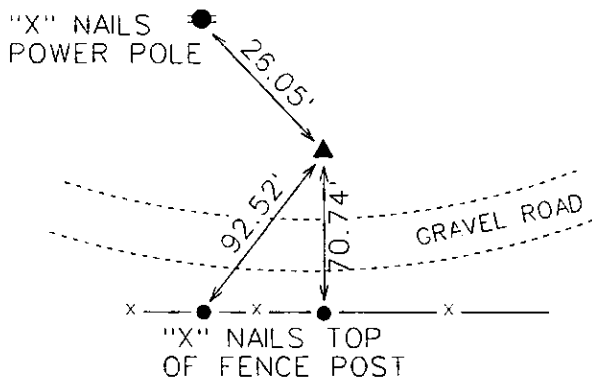
- 1) NW CORNER NE1/4 NW1/4 - FOUND 1/2" REBAR W/ CAP 5041 USING RECORDED TIE IN BOOK 1, PAGE 661. RETIED MONUMENT
- 2) S1/4 CORNER - FOUND PK NAIL IN PAVEMENT. ORIGINAL TIES RECORDED IN BOOK 1, PAGE 224 WERE NOT LOCATED. RETIED MONUMENT
- 3) SE CORNER - FOUND NAIL IN CUT "X" USING RECORDED TIES IN BOOK 1, PAGE 85. RETIED MONUMENT.

#### Plan-View

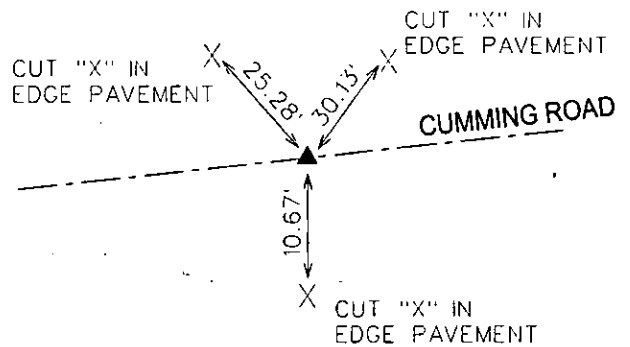
(Show a minimum of three reference ties to durable physical objects, relevant monuments and physical conditions that will enable recovery of the corner.)



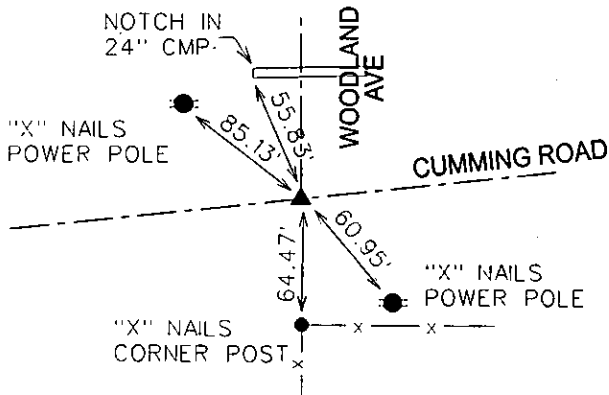
1) NW CORNER NE1/4 NW1/4  
FOUND 1/2" REBAR W/ CAP 5041



2) S1/4 CORNER  
FOUND PK NAIL



3) SE CORNER  
FOUND NAIL IN CUT "X"



I hereby certify that this land surveying document was prepared and the related surveying work was performed by me or under my direct supervision and that I am a duly licensed Land Surveyor under the laws of the State of Iowa.

*Mark F. Wandro* 1/24/06  
Mark F. Wandro, PLS Date

License Number 11465  
My License Renewal Date is December 31, 2006

Pages or sheets covered by this seal:  
SHEET 1 OF 1

#### List Corners to be Indexed

Corners	Section	Twp	Range
1) NW COR NE1/4 NW1/4	11	77	26
SE COR SW1/4 SW1/4	2	77	26
2) S 1/4 COR	11	77	26
N 1/4 COR	14	77	26
3) SE COR	11	77	26
SW COR	12	77	26
NW COR	13	77	26
NE COR	14	77	26