

COMPUTER   
RECORDED   
COMPARED

MICHELLE UTSLER, COUNTY RECORDER  
MADISON IOWA

RETURN TO : BOLDMAN LAND SURVEYING, P.C., BOX 66, WINTERSET, IA 50273 515-462-9242  
UNITED STATES PUBLIC LAND SURVEY CORNER CERTIFICATE

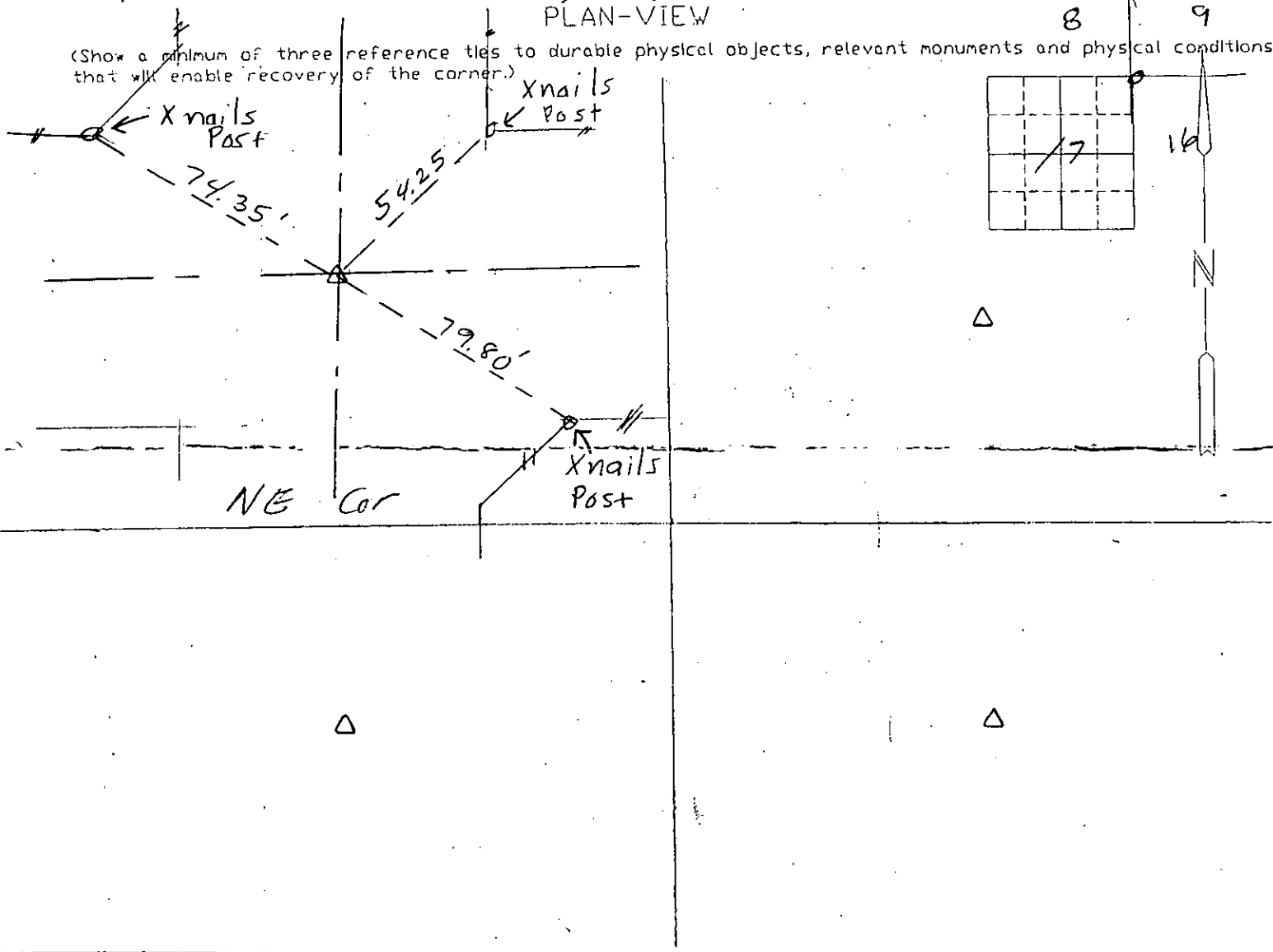
OF

Land Survey Monuments situated in Section 17, Township 77, Range 27,  
of the Fifth Principal Meridian, Madison County, Iowa  
Previously recorded in None Found In County Recorder's Office.  
(book, page, document number, etc.)

(show reason for preparing this certificate, the evidence and detailed procedures used in establishing the corner positions and monumentation found or placed.)

Monument-Description-and-Remarks: Sgt 1/2" pin w/ orange cap stamped # 13427. from county road plan information

All tied to pk nail and orange washer (New) unless noted otherwise



I hereby certify that the survey work was completed and this certificate was prepared by me or under my direct personal supervision and that I am a duly Licensed Land Surveyor under the laws of the State of Iowa

Signature: Craig S. Boldman

Craig S. Boldman

Date: 3/1/06

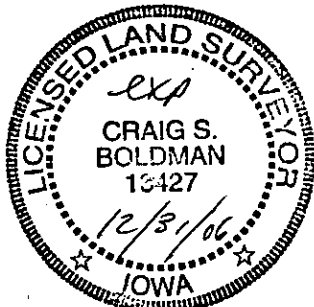
Reg. No. 13427

Reg. No. 13427

List Corners to be Indexed

Corners	Section	Twp	Range
NE	17	77	27
SE	8	77	27
SW	9	77	27
NW	16	77	27

SEAL



Job # 06007