

COMPUTER	<input checked="" type="checkbox"/>
RECORDED	<input checked="" type="checkbox"/>
COMPARED	<input type="checkbox"/>

MICHELLE UTSLER, COUNTY RECORDER
MADISON IOWA

Chad A. Daniels, Warren County Engineers Office, 301 N. Buxton, Indianola, IA 50125, 515-961-1050

UNITED STATES PUBLIC LAND CORNER CERTIFICATE OF

Land Survey Monuments situated in Section 36, Township 74 N, Range 26 W, of the 5th P.M., Madison County, Iowa. Previously recorded in n.a. in County Recorders Office. (book, page, document number, etc.)

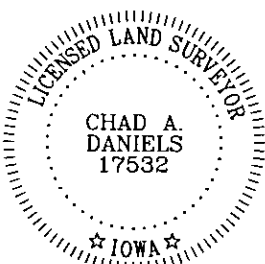
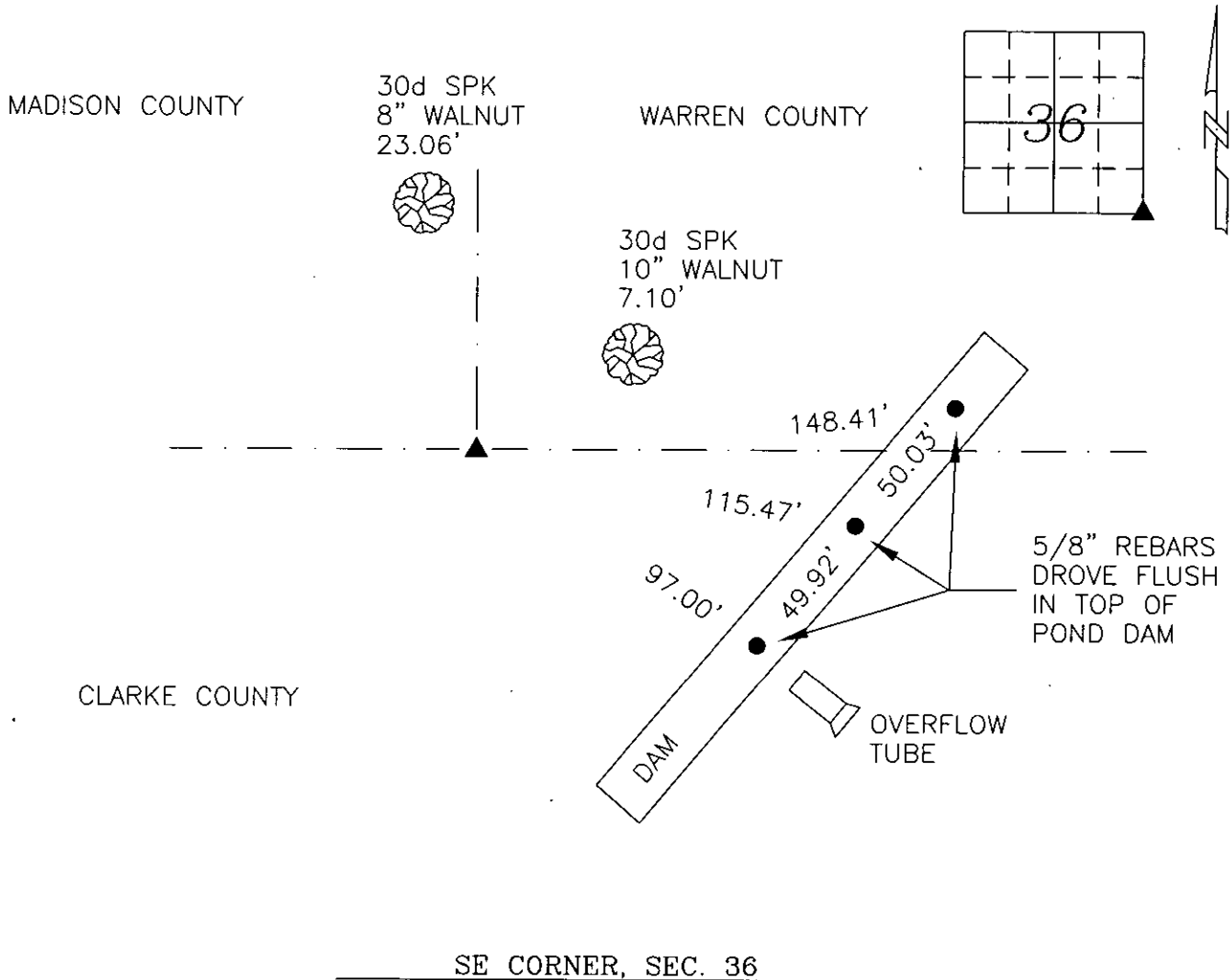
(Show reason for preparing this certificate, the evidence and detailed procedures used in establishing the corner positions and monumentation found or placed.)

Monument Description and Remarks:

Found Concrete Monument set by preliminary survey crew for Interstate 35. Set sign post on East side of monument. Accepted position.

PLAN VIEW

(Show a minimum of three reference ties to durable physical objects, relevant monuments and physical conditions that will enable recovery of the corner.)



I hereby certify that this land surveying document was prepared and the related survey work was performed by me or under my direct personal supervision and that I am a duly licensed Land Surveyor under the laws of the State of Iowa.

Signature: Chad A. Daniels
Chad A. Daniels

Date: 11/9/2005

License number 17532
My license renewal date is December 31, 2006