

MICHELLE UTSLER, COUNTY RECORDER  
MADISON IOWA

COMPUTER	<input checked="" type="checkbox"/>
RECORDED	<input checked="" type="checkbox"/>
COMPARED	<input type="checkbox"/>

# UNITED STATES PUBLIC LAND SURVEY CORNER CERTIFICATE OF

LAND SURVEY MONUMENTS SITUATED IN SECTION 3, TOWNSHIP 77 NORTH, RANGE 28 WEST, OF THE FIFTH PRINCIPAL MERIDIAN, MADISON, COUNTY, IOWA. PREVIOUSLY RECORDED IN \_\_\_\_\_ IN COUNTY RECORDER'S OFFICE. (BOOK, PAGE, DOCUMENT NUMBER, ETC...)

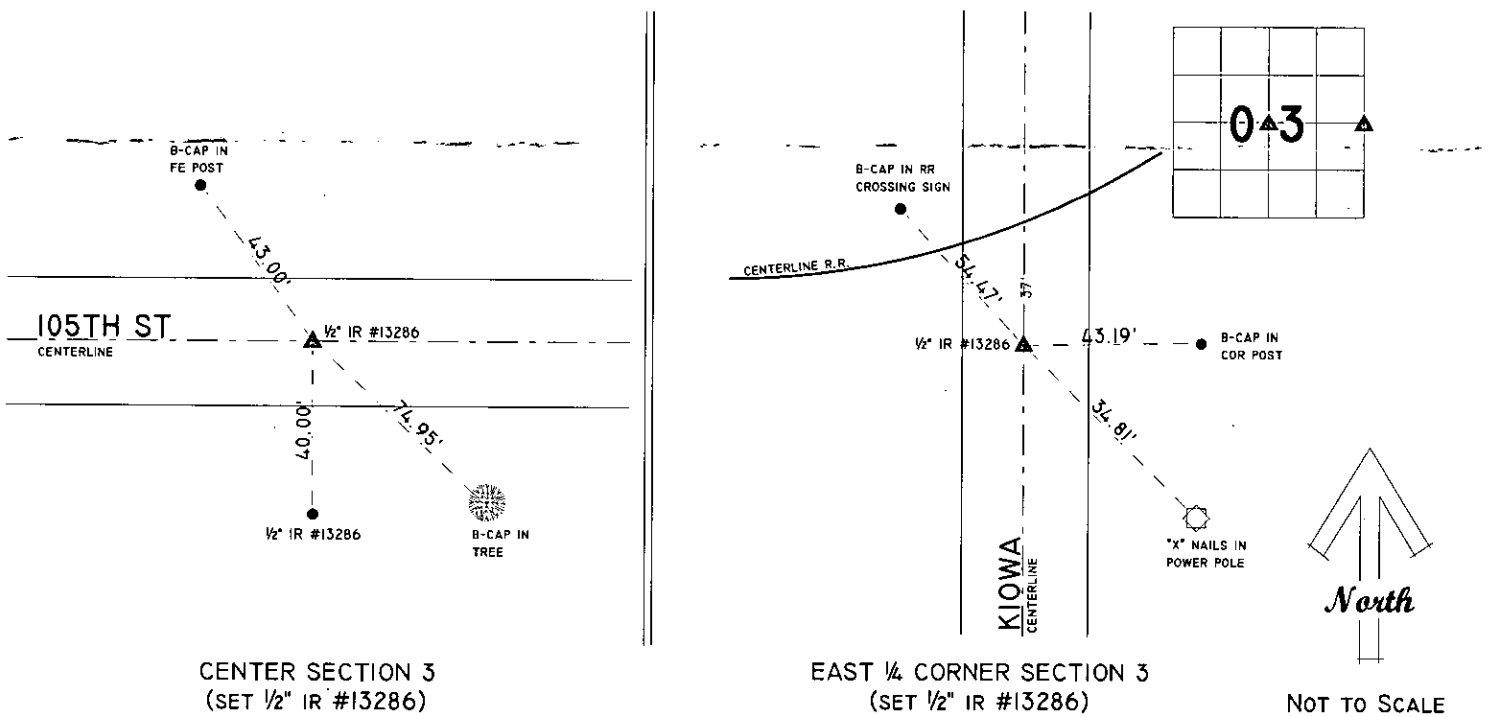
(SHOW REASON FOR PREPARING THIS CERTIFICATE, THE EVIDENCE AND DETAILED PROCEDURES USED IN ESTABLISHING THE CORNER POSITIONS AND MONUMENTATION FOUND OR PLACED.)

MONUMENT DESCRIPTION AND REMARKS: THE CENTER OF SECTION 3, SET 1/2" IR #13286 ON EXTENDED LINE FROM EXISTING CORNER, WEST. THE EAST 1/4 CORNER SECTION 3, SET 1/2" IR #13286, USED R-O-W FROM COUNTY INFO AND EXTENDED LIFE FROM THE WEST.

CORNERS WERE NOT SET OR MISSING. USED CORNERS TO PERFORM A PLAT OF SURVEY.

## PLAN - VIEW

(SHOW A MINIMUM OF THREE REFERENCE TIES TO DURABLE PHYSICAL OBJECTS, RELEVANT MONUMENTS AND PHYSICAL CONDITIONS THAT WILL ENABLE RECOVERY OF THE CORNER.)



I HEREBY CERTIFY THAT THIS LAND SURVEYING DOCUMENT WAS PREPARED AND THE RELATED SURVEY WORK WAS PERFORMED BY ME OR UNDER MY DIRECT SUPERVISION AND THAT I AM A DULY LICENSED LAND SURVEYOR UNDER THE LAWS OF THE STATE OF IOWA.

*[Signature]* 12/5/05  
GREGORY L. ROSS, L.S. # 13286 - IOWA  
MY LICENSE RENEWAL DATE IS DECEMBER 31, 2006  
DATE



### LIST OF CORNERS TO BE INDEXED

CORNER	SECTION #	TWP #	RANGE #
WEST 1/4 CORNER	2	77	28

ross LAND SURVEYING, inc.  
P.O. Box 336, Johnston, Iowa 50131  
Ph.(515) 254-2567 FX.(515) 254-1621