

COMPUTER	✓
RECORDED	✓
COMPARED	_____

MICHELLE UTSLER, COUNTY RECORDER  
MADISON IOWA

Daniels Land Surveying, 22598 18th Ave, New Virginia, IA 50210, 641-449-3259

# UNITED STATES PUBLIC LAND CORNER CERTIFICATE OF

Land Survey Monuments situated in Section 34, Township 76 N, Range 26 W, of the  
5th P.M., Madison County, Iowa. Previously recorded in N.A.  
in County Recorders Office. (book, page, document number, etc.)

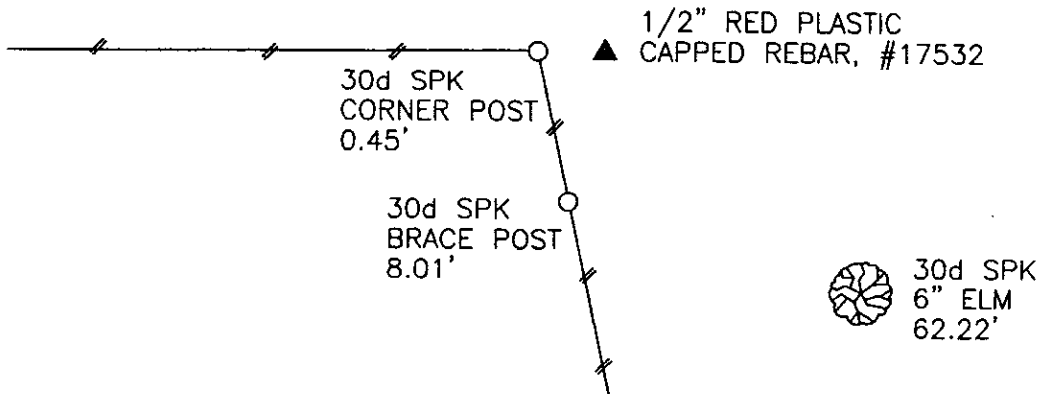
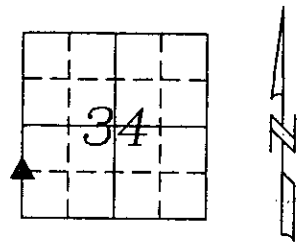
(Show reason for preparing this certificate, the evidence and detailed procedures used in  
establishing the corner positions and monumentation found or placed.)

Monument Description and Remarks:

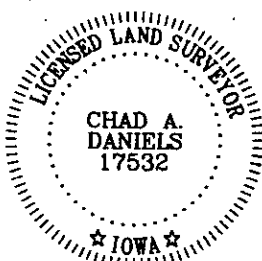
Set 1/2" red plastic capped rebar, #17532 from information gathered traversing  
Section 34.

## PLAN VIEW

(Show a minimum of three reference ties to durable physical objects, relevant monuments  
and physical conditions that will enable recovery of the corner.)



NW COR., SW 1/4, SW 1/4, SEC. 34



I hereby certify that this land surveying document was prepared and the  
related survey work was performed by me or under my direct personal  
supervision and that I am a duly licensed Land Surveyor under the laws  
of the State of Iowa.

Signature: Chad A. Daniels  
Chad A. Daniels

Date: 11/27/2005

License number 17532  
My license renewal date is December 31, 2006

2605-02