

COMPUTER	<input checked="" type="checkbox"/>
RECORDED	<input checked="" type="checkbox"/>
COMPARED	<input type="checkbox"/>

RETURN TO : BOLDMAN LAND SURVEYING, P.C., BOX 66, WINTERSSET, IA 50273 515-462-9242
UNITED STATES PUBLIC LAND SURVEY CORNER CERTIFICATE

OF

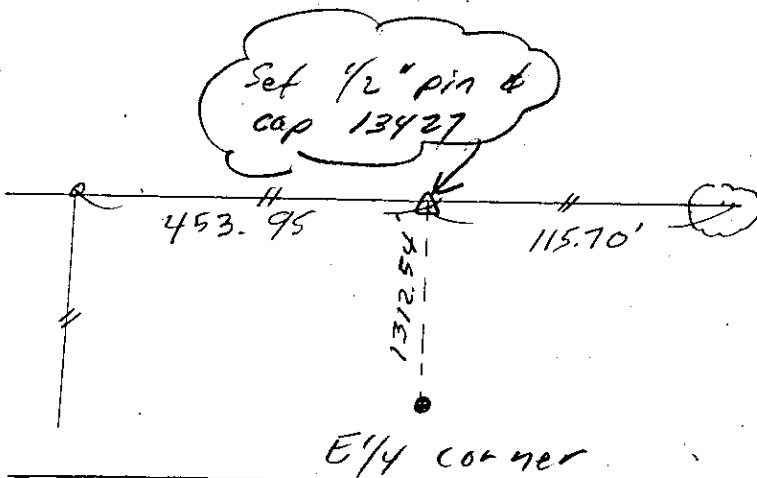
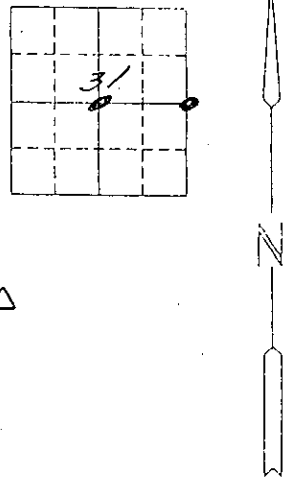
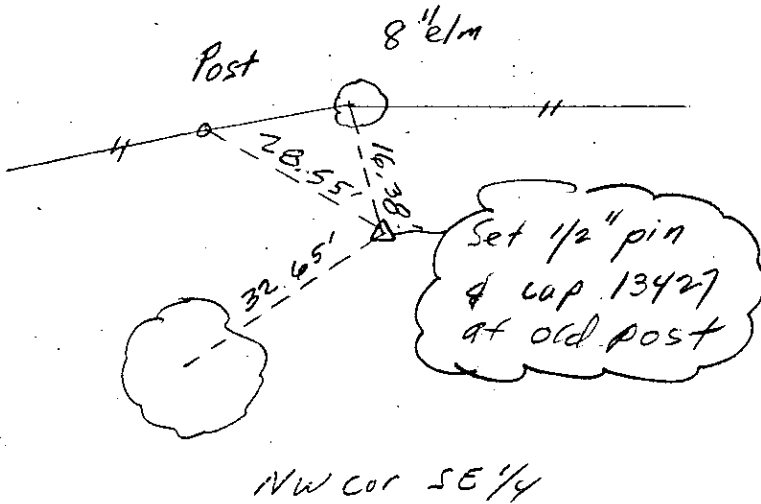
Land Survey Monuments situated in Section 27, Township 31 74, Range 74,
of the Fifth Principal Meridian, Madison County, Iowa
Previously recorded in None In County Recorder's Office.
(book, page, document number, etc.)

(show reason for preparing this certificate, the evidence and detailed procedures used in establishing the corner positions and monumentation found or placed.)

Monument Description and Remarks: NW Cor SE 1/4 - found old corner post near calculated position. Accepted post. E 1/4 corner - Position based on Survey Rec'd Book 3 Page 476. All tied to pk nail and orange washer (NW) unless noted otherwise

PLAN-VIEW

(Show a minimum of three reference ties to durable physical objects, relevant monuments and physical conditions that will enable recovery of the corner.)



I hereby certify that the survey work was completed and this certificate was prepared by me or under my direct personal supervision and that I am a duly Licensed Land Surveyor under the laws of the State of Iowa

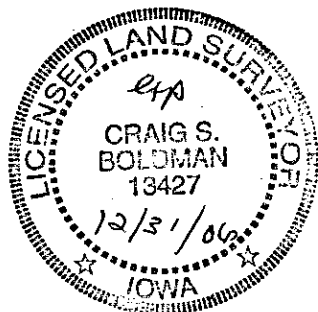
Signature: Craig S. Boldman
Craig S. Boldman

Date: 12/23/05 Reg. No. 13427

List Corners to be Indexed

Corners	Section	Twp	Range
NW SE 1/4	31	74	27
E 1/4	31	74	27
W 1/4	32	74	27

SEAL



file: 05076