

MICHELLE UTSLER, COUNTY RECORDER
MADISON IOWA

COMPUTER	<input checked="" type="checkbox"/>
RECORDED	<input checked="" type="checkbox"/>
COMPARED	<input type="checkbox"/>

Daniels Land Surveying, 22598 18th Ave, New Virginia, IA 50210, 641-449-3259

UNITED STATES PUBLIC LAND CORNER CERTIFICATE OF

Land Survey Monuments situated in Section 25, Township 75 N, Range 26 W, of the
5th P.M., Madison County, Iowa. Previously recorded in n.a.
in County Recorders Office. (book, page, document number, etc.)

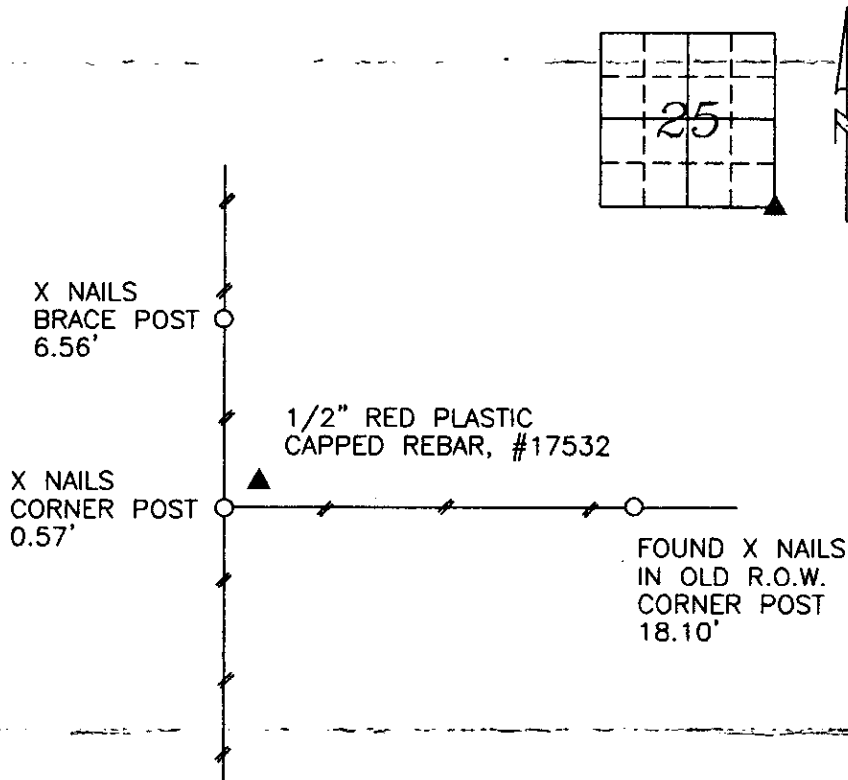
(Show reason for preparing this certificate, the evidence and detailed procedures used in
establishing the corner positions and monumentation found or placed.)

Monument Description and Remarks:

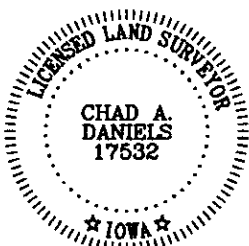
Warren County Engineer's office ties indicated a stone at this location had been
found and referenced by the preliminary survey crew for Interstate 35. The ties
indicated the stone was 10" deep in line with fences East and West and in the
center of a county road. Since that time the road has been vacated and a fence
has been built down the center of the old roadbed. I was unable to locate the
stone but one tie remained from the old ties, which I used along with the other
visible evidence to replace the monument.

PLAN VIEW

(Show a minimum of three reference ties to durable physical objects, relevant monuments
and physical conditions that will enable recovery of the corner.)



SE CORNER, SEC. 25



I hereby certify that this land surveying document was prepared and the
related survey work was performed by me or under my direct personal
supervision and that I am a duly licensed Land Surveyor under the laws
of the State of Iowa.

Signature: Chad A. Daniels Date: 11/7/2005
Chad A. Daniels

License number 17532
My license renewal date is December 31, 2006

2905-01