

COMPUTER	✓
RECORDED	✓
COMPARED	

MICHELLE UTSLER, COUNTY RECORDER
MADISON IOWA

VANCE & HOCHSTETLER, P.C., CONSULTING ENGINEERS, WINTERSSET, IOWA (515) 462-3995
05-1655 CHARLES T. VANCE, 110 West Green St., Winterset, Iowa, 50273
JAMES M HOCHSTETLER, 110 West Green St., Winterset, Iowa 50273

UNITED STATES PUBLIC LAND SURVEY CORNER CERTIFICATE

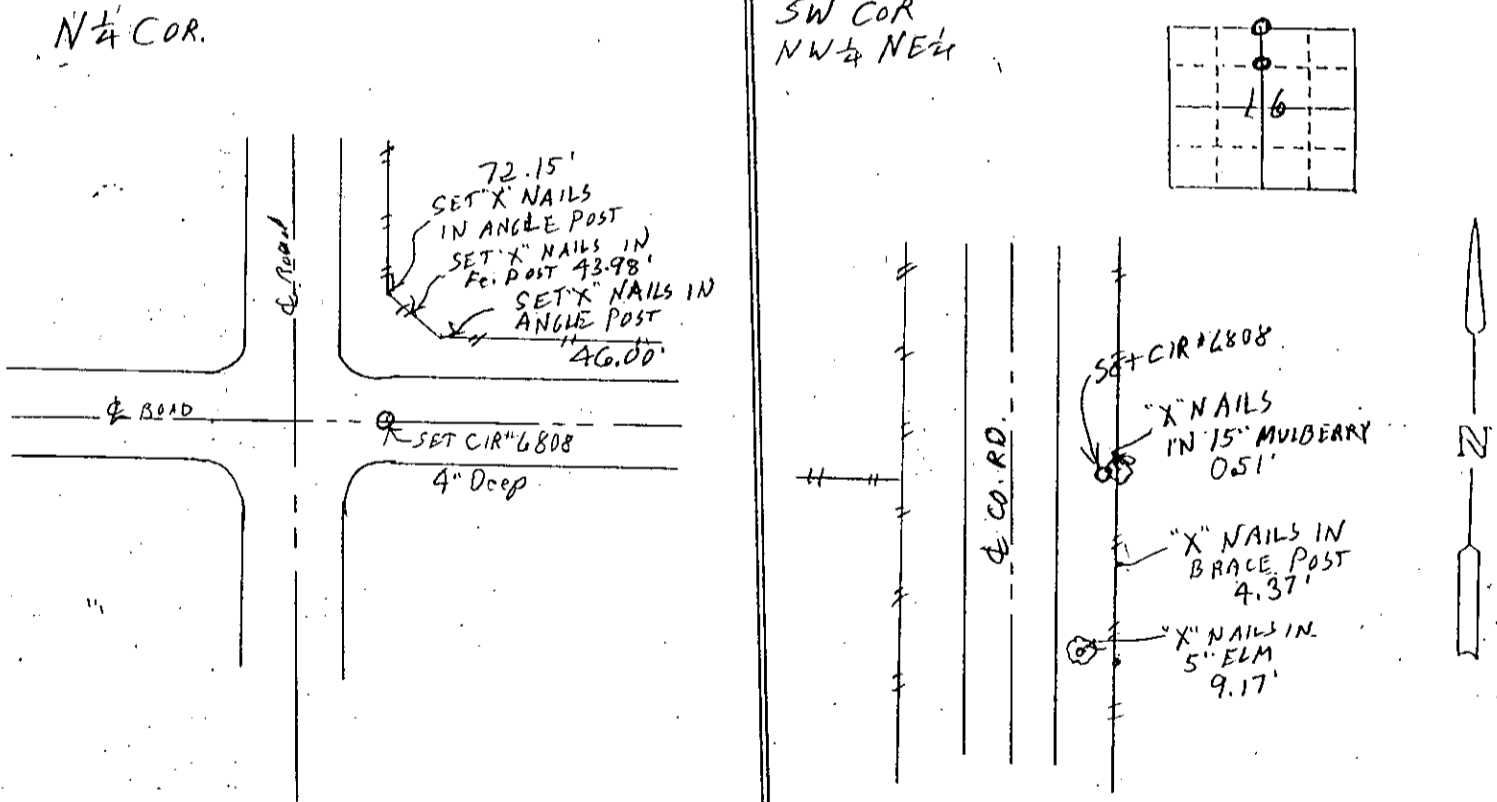
Land Survey Monuments situated in Section 16 OF 16 Township 74 N Range 29W
of the Fifth Principal Meridian, MADISON County, Iowa.
Previously recorded in _____ in County Recorder's Office.
(book, page, document number, etc.)

(Show reason for preparing this certificate, the evidence and detailed procedures used in establishing the the corner positions and monumentation found or placed.)

Monument Description and Remarks: N $\frac{1}{4}$ Cor - Set yellow CIR #6808 at $\frac{1}{2}$ Co. Rd. Row equal distance from certified NE Cor & Iron Pin found at NW Cor. which was at approx. $\frac{1}{2}$ of low maintenance road. Original road dedication of North-South road indicate road centered on $\frac{1}{4}$ Section line but field measurements and original survey notes place the corner on the East Row line of the N-S Road SW Cor NW $\frac{1}{4}$ NE $\frac{1}{4}$ - Set yellow CIR #6808 at mid point between Set N $\frac{1}{4}$ Cor. and $\frac{1}{2}$ Paved G-61. Measurement of mile at $\frac{1}{4}$ Sec. line indicated the split on the East Row line of N-S road.

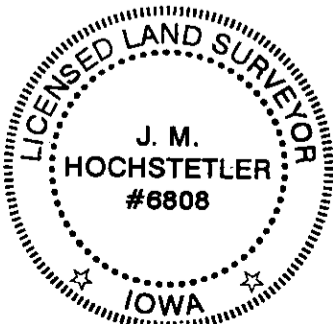
PLAN - VIEW

(Show a minimum of three reference ties to durable physical objects, relevant monuments and physical conditions that will enable recovery of the corner.)



List Corners to be Indexed

Corners	Section	Twp	Range
N $\frac{1}{4}$ COR	16	74N	29W
SW COR NW $\frac{1}{4}$ NE $\frac{1}{4}$	16	74N	29W



I hereby certify that this land surveying document was prepared and the related survey work was performed by me or under my direct personal supervision and that I am a duly licensed Land Surveyor under the laws of the State of Iowa.

J.M. Hochstetler
J.M. HOCHSTETLER
License number 6808 Date 10/25/05
My license renewal date is December 31, 2005
Pages or sheets covered by this seal: 1