

MICHELLE UTSLER, COUNTY RECORDER
MADISON IOWA

VANCE & HOCHSTETLER, P.C. CONSULTING ENGINEERS, WINTERSET, IOWA (515)462-3995

CHARLES T. VANCE, 110 WEST GREEN ST., WINTERSET, IOWA 50273
JAMES M. HOCHSTETLER, 110 WEST GREEN ST., WINTERSET, IOWA 50273

COMPUTER	<input checked="" type="checkbox"/>
RECORDED	<input checked="" type="checkbox"/>
COMPARED	<input type="checkbox"/>

UNITED STATES PUBLIC LAND SURVEY CORNER CERTIFICATE

OF

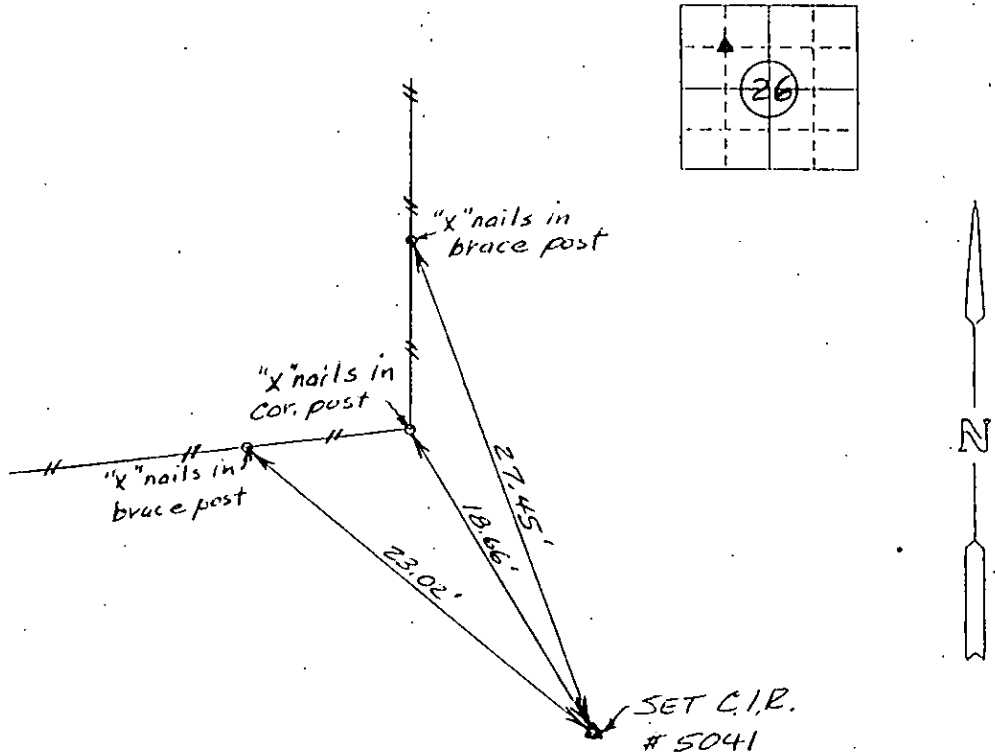
Land Survey Monuments situated in Section 26, Township 77 North, Range 26 West, of the Fifth Principal Meridian, Madison County, Iowa.
Previously recorded in Section Cor. Cert. Book 1 Page 400 in County Recorder's Office.
(book, page, document number, etc.)

(Show reason for preparing this certificate, the evidence and detailed procedures used in establishing the corner positions and monumentation found or placed.)

Monument Description and Remarks: Set SE. COR. of NW 1/4 NW 1/4 on line and equal distance between the SW. Cor of NW 1/4 NW 1/4 and the SE. COR of NE 1/4 NW 1/4 all in Section 26, T77N, R26W of the 5th P.M., Madison County, Iowa.

PLAN - VIEW

(Show a minimum of three reference ties to durable physical objects, relevant monuments and physical conditions that will enable recovery of the corner.)



Ref. to SE. COR. of NW 1/4 NW 1/4 Section 26, T77N, R26W.

I hereby certify that the survey work was completed and this land surveying document was prepared by me or under my direct personal supervision and that I am a duly registered land surveyor under the laws of the state of Iowa

Signature: Charles T. Vance
Name typed or printed: Charles T. Vance, PE & LS

Date: 14 Sept. 2005 Reg. No. 5041

My registration renewal date is December 31, 2005

Corners	List Corners to be Indexed Section	Twp	Range
SE. COR. NW 1/4 NW 1/4	26	77	26

