

COMPUTER   
RECORDED   
COMPARED

MICHELLE UTSLER, COUNTY RECORDER  
MADISON IOWA

RETURN TO : BOLDMAN LAND SURVEYING, P.C., BOX 66, WINTERSET, IA 50273 515-462-9242  
UNITED STATES PUBLIC LAND SURVEY CORNER CERTIFICATE

Land Survey Monuments situated in Section 24 of Township 75 Range 29,  
of the Fifth Principal Meridian, Madison County, Iowa  
Previously recorded in None in County Recorder's Office.  
(book, page, document number, etc.)

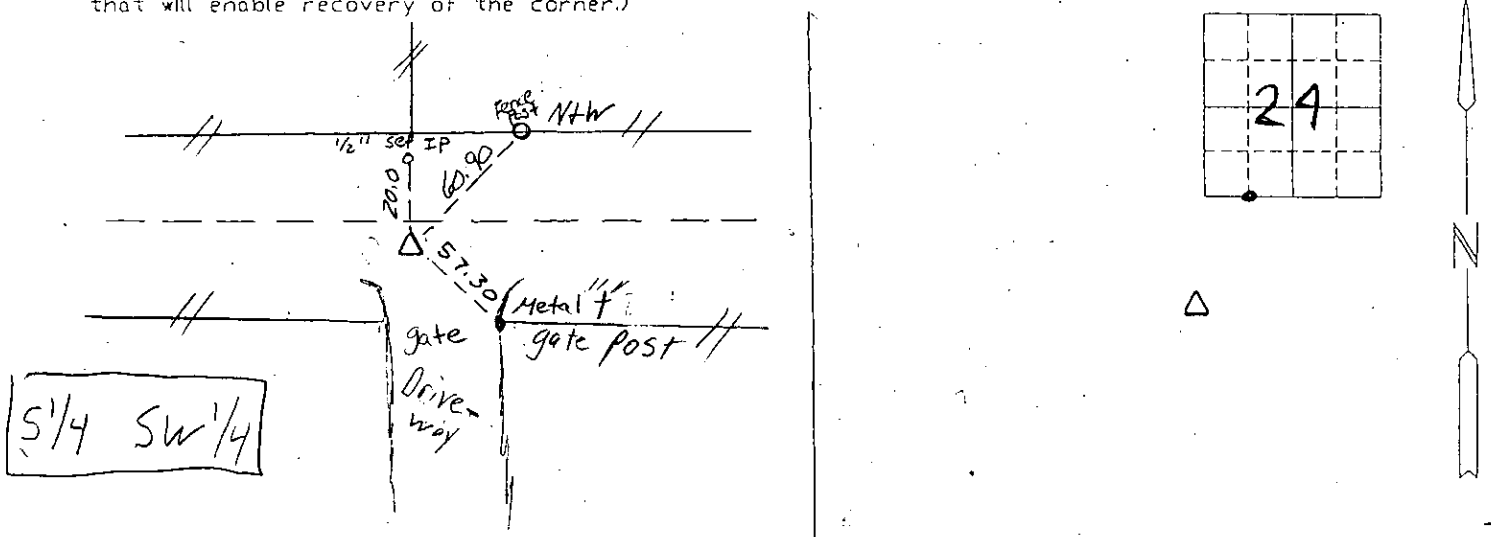
(Show reason for preparing this certificate, the evidence and detailed procedures used in establishing the corner positions and monumentation found or placed.)

Monument Description and Remarks: Set 1 1/2" pin & cap #13427 at R.O.W  
split in line w/ North fence

All tied to pk nail and orange washer (NW) unless noted otherwise.

PLAN-VIEW

(Show a minimum of three reference ties to durable physical objects, relevant monuments and physical conditions that will enable recovery of the corner.)



I hereby certify that the survey work was completed and this certificate was prepared by me or under my direct personal supervision and that I am a duly Licensed Land Surveyor under the laws of the State of Iowa

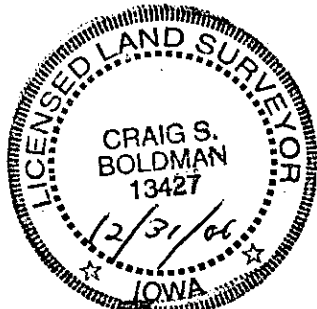
Signature: Craig Boldman  
Craig S. Boldman

Date: 9/16/05 Reg. No. 13427

List Corners to be Indexed

Corners	Section	Twp	Range
S 1/4 SW 1/4	24	75	29
N 1/4 NW 1/4	25	75	29

SEAL



Project 05069