

COMPUTER	✓
RECORDED	✓
COMPARED	✓

MICHELLE UTSLER, COUNTY RECORDER
MADISON IOWA

RETURN TO : BOLDMAN LAND SURVEYING, P.C., BOX 66, WINTERSSET, IA 50273 515-462-9242

UNITED STATES PUBLIC LAND SURVEY CORNER CERTIFICATE

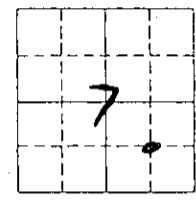
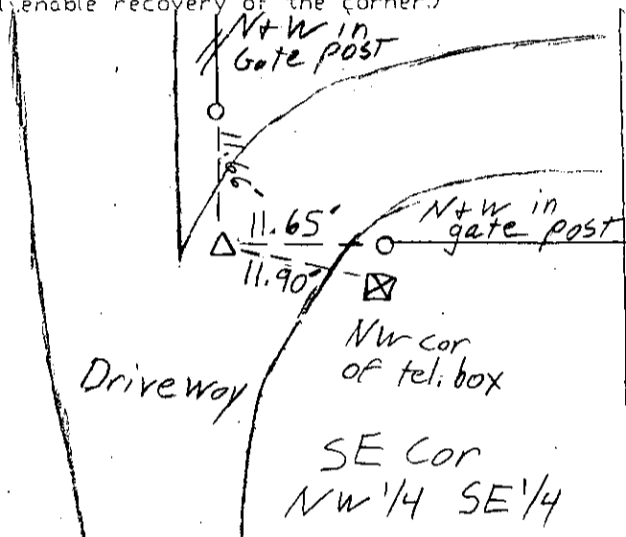
Land Survey Monuments situated in Section 7 OF 7 Township 75, Range 27
of the Fifth Principal Meridian, Madison County, Iowa
Previously recorded in None In County Recorder's Office.
(book, page, document number, etc.)

(show reason for preparing this certificate, the evidence and detailed procedures used in establishing the corner positions and monumentation found or placed.)

Monument Description and Remarks: Center SE 1/4 - found 1/2" pin. This point is the SW corner of A+B Hillside Est. subdivision as shown on plans.
All tied to PK nail and orange washer (NW) unless noted otherwise

PLAN-VIEW

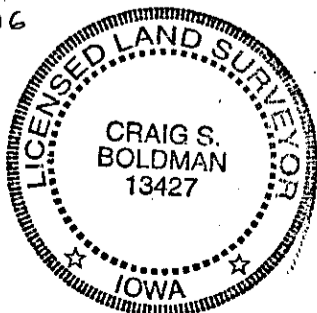
(Show a minimum of three reference ties to durable physical objects, relevant monuments and physical conditions that will enable recovery of the corner.)



I hereby certify that the survey work was completed and this certificate was prepared by me or under my direct personal supervision and that I am a duly Licensed Land Surveyor under the laws of the State of Iowa

Signature: Craig Boldman
Craig S. Boldman

Date: 7/26/05 Reg. No. 13427
exp 12/31/06



List Corners to be Indexed

Corners	Section	Twp	Range
Center, SE 1/4	7	75	27

SEAL

Project 05061