

MICHELLE UTSLER, COUNTY RECORDER
MADISON IOWA

VANCE & HOCHSTETLER, P.C., CONSULTING ENGINEERS, WINTERSSET, IOWA (515) 462-3995
05-193s CHARLES T. VANCE, 110 West Green St., Winterset, Iowa, 50273
JAMES M HOCHSTETLER, 110 West Green St., Winterset, Iowa 50273

COMPUTER	✓
RECORDED	✓
COMPARED	_____

UNITED STATES PUBLIC LAND SURVEY CORNER CERTIFICATE
OF

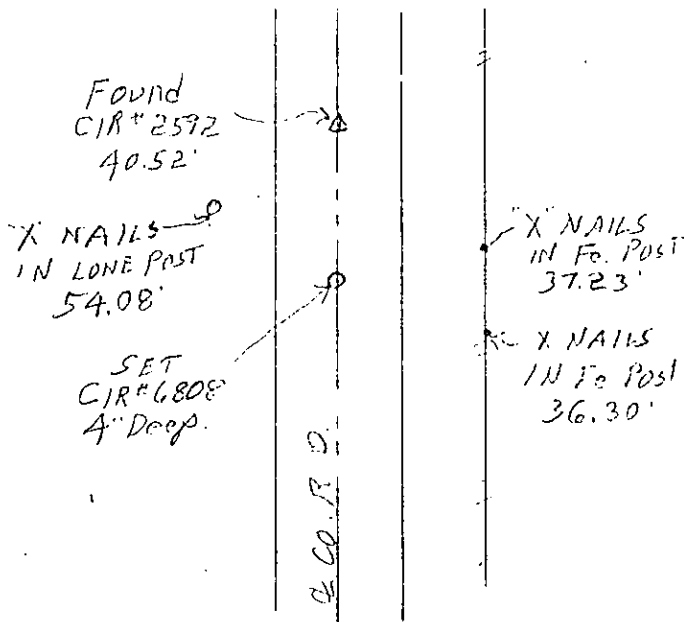
Land Survey Monuments situated in Section 18, Township 76 N, Range 29 W, of the Fifth Principal Meridian, MADISON County, Iowa.
Previously recorded in NW Cor SW 1/4 NW 1/4 Tied by Boldman in in County Recorder's Office.
(book, page, document number, etc.) Book 2004 Page 1965 but not set.

(Show reason for preparing this certificate, the evidence and detailed procedures used in establishing the the corner positions and monumentation found or placed.)

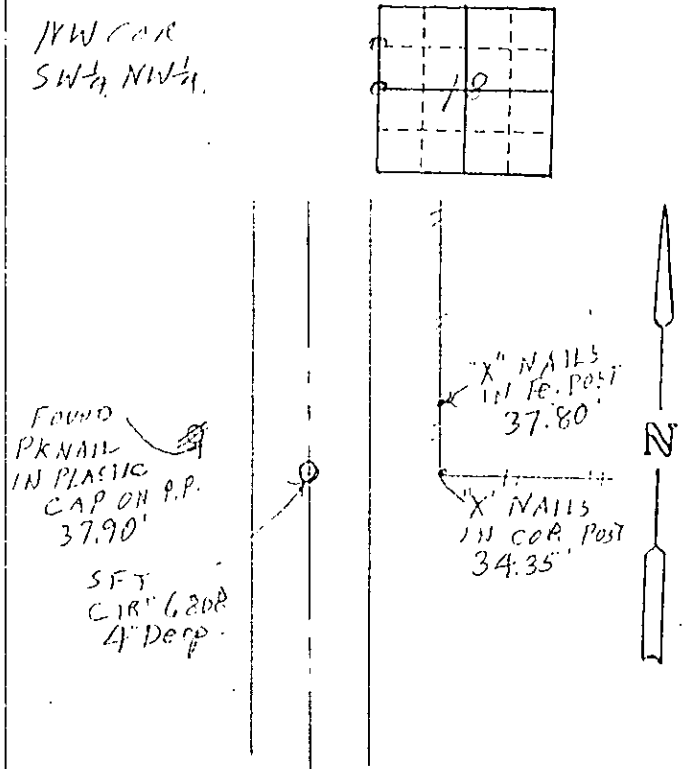
Monument Description and Remarks: W 1/4 Cor - Set yellow CIR # 6808
4" drop on a projection of line from found NW Cor through a
corner set by Carl Schaefer for a survey in Adams County. Point is
equal distance from found NW Cor & SW Cor.
NW Cor SW 1/4 NW 1/4 - Set yellow CIR # 6808 4" deep on line between
found NW Cor. & Set W 1/4 Cor on projection of line from SE Cor NW 1/4 NW 1/4 set by
Boldman through a ROW Cor set by Boldman at SW COR NW 1/4 NW 1/4. Corner is shown
on plat of Survey and Certificate. PLAN - VIEW

(Show a minimum of three reference ties to durable physical objects, relevant monuments and physical conditions that will enable recovery of the corner.)

W 1/4 Cor.



NW Cor SW 1/4 NW 1/4.



List Corners to be Indexed

Corners	Section	Twp	Range
W 1/4 Cor.	18	76 N	29 W
NW Cor SW 1/4 NW 1/4	18	76 N	29 W

I hereby certify that this land surveying document was prepared and the related survey work was performed by me or under my direct personal supervision and that I am a duly licensed Land Surveyor under the laws of the State of Iowa.
J.M. Hochstetler
J.M. HOCHSTETLER
License number 6808 Date 10/5/05
My license renewal date is December 31, 2005
Pages or sheets covered by this seal: 1

