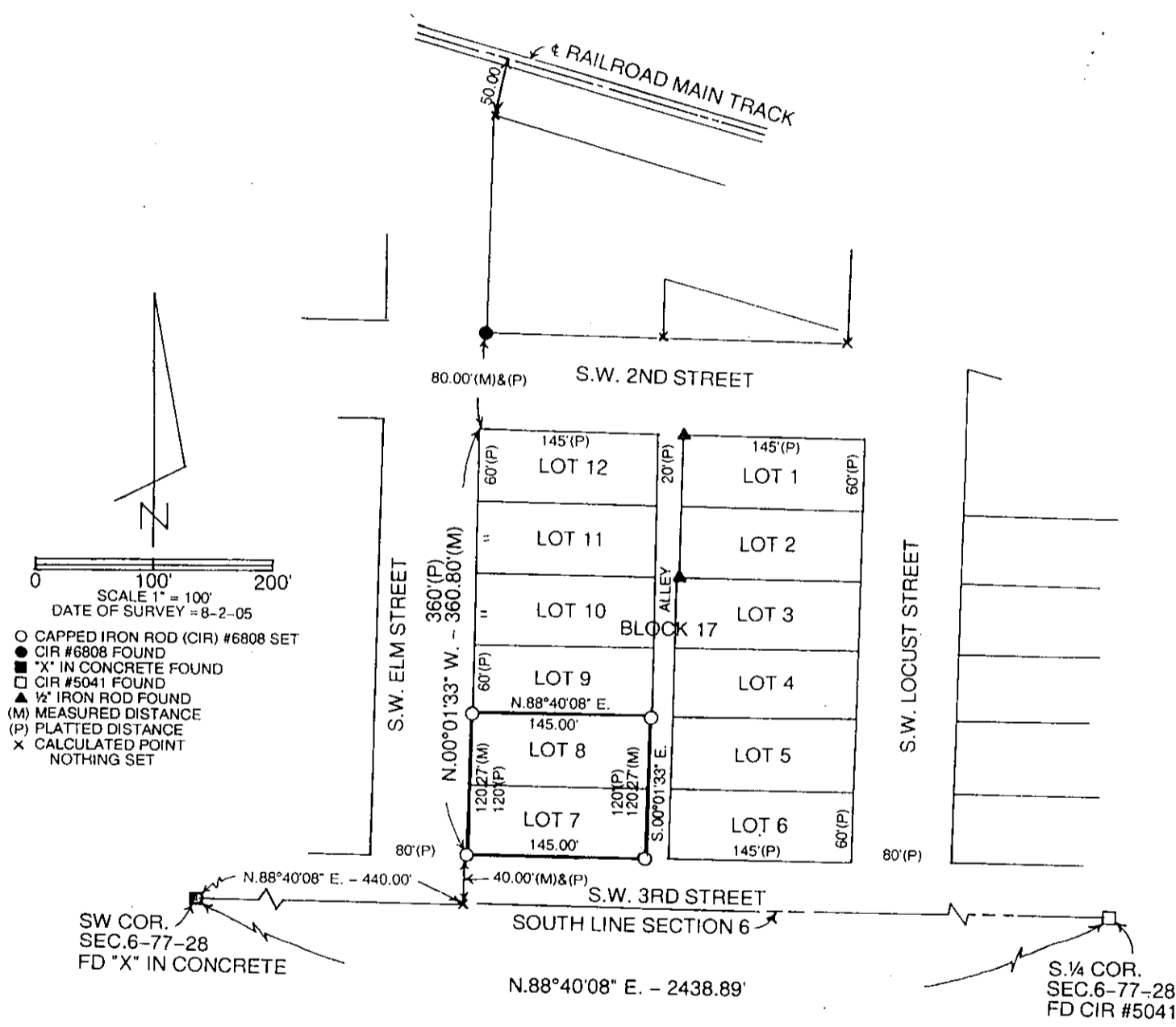


MICHELLE "MICKI" UTSLER, COUNTY RECORDER  
MADISON IOWA

VANCE & HOCHSTETLER, P.C. CONSULTING ENGINEERS, WINTERSET, IOWA (515) 462-3995  
CHARLES T. VANCE, 110 WEST GREEN ST., WINTERSET, IOWA 50273  
JAMES M HOCHSTETLER, 110 WEST GREEN ST., WINTERSET, IOWA 50273  
05-107S

COMPUTER	<input checked="" type="checkbox"/>
RECORDED	<input checked="" type="checkbox"/>
COMPARED	<input type="checkbox"/>

PLAT OF SURVEY OF LOTS 7 AND 8, BLOCK 17, ORIGINAL TOWN OF EARLHAM, MADISON COUNTY, IOWA OWNED BY ROBERT W. & LYNNE D. WALDRON.



LICENSED LAND SURVEYOR

J. M. HOCHSTETLER

#6808

IOWA

I hereby certify that this land surveying document was prepared and the related survey work was performed by me or under my direct personal supervision and that I am a duly licensed Land Surveyor under the laws of the State of Iowa.

*J.M. Hochstetler*

J.M. HOCHSTETLER  
License number 6808 Date 8/9/05  
My license renewal date is December 31, 2005  
Pages or sheets covered by this seal: 1