

MICHELLE "MICKI" UTSLER, COUNTY RECORDER  
MADISON IOWA

VANCE & HOCHSTETLER, P.C. CONSULTING ENGINEERS, WINTERSET, IOWA (515) 462-3995

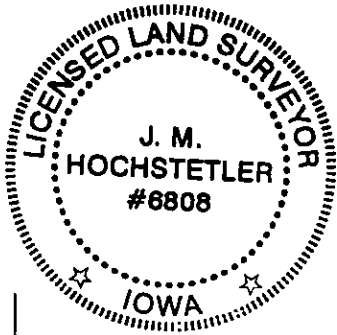
CHARLES T. VANCE, 110 WEST GREEN ST., WINTERSET, IOWA 50273

JAMES M HOCHSTETLER, 110 WEST GREEN ST., WINTERSET, IOWA 50273

05-1305

COMPUTER	<input checked="" type="checkbox"/>
RECORDED	<input checked="" type="checkbox"/>
COMPARED	<input type="checkbox"/>

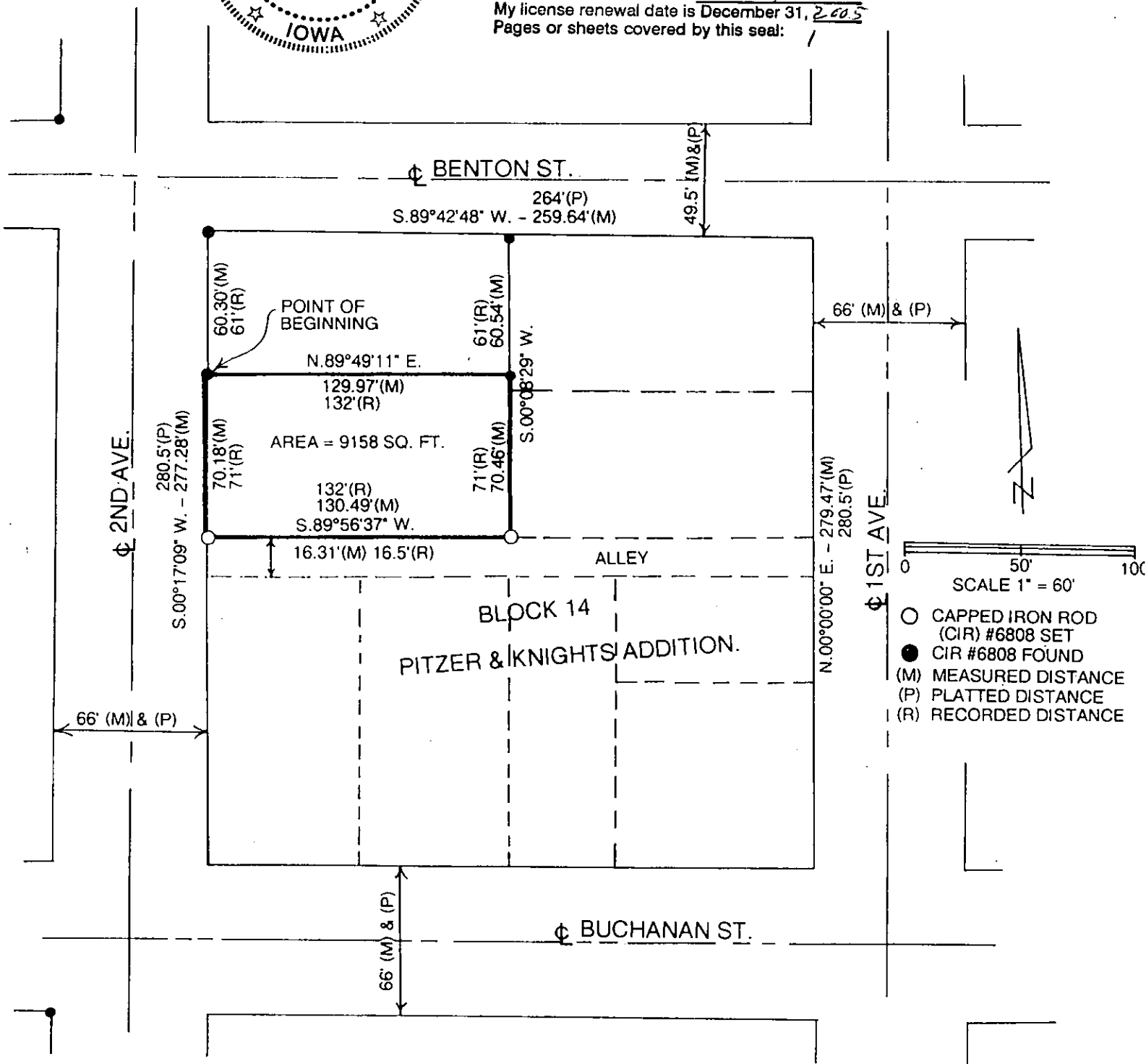
PLAT OF SURVEY OF A PORTION OF BLOCK 14, PITZER & KNIGHTS  
ADDITION TO THE CITY OF WINTERSET, MADISON COUNTY, IOWA  
FOR JEANNIE M. UTSLER.



I hereby certify that this land surveying document was prepared and the related survey work was performed by me or under my direct personal supervision and that I am a duly licensed Land Surveyor under the laws of the State of Iowa.

*J. M. Hochstetler*

J.M. HOCHSTETLER  
License number 6808 Date 7/26/05  
My license renewal date is December 31, 2005  
Pages or sheets covered by this seal: 1



**SURVEY DESCRIPTION:**

Commencing at the Northwest Corner of Block 14, Pitzer & Knights Additions to the City of Winterset, Madison County, Iowa thence South 00°17'09" West 60.30 feet along the West line of said Block 14 to the Point of Beginning; thence North 89°49'11" East 129.97 feet; thence South 00°08'29" West 70.46 feet to a point on the North line of an alley through said Block 14; thence South 89°56'37" West 130.49 feet along said North line to a point on the West line of said Block 14; thence North 00°17'09" East 70.18 feet to the Point of Beginning containing 9158 Square feet.