

MICHELLE "MICKI" UTSLER, COUNTY RECORDER  
MADISON IOWA

HACKETT SURVEYING, Prepared By: Michael James Hackett, 803 East South Street, Winterset, Ia. 50273, Tel. (515) 462-1106

# UNITED STATES PUBLIC LAND SURVEY CORNER CERTIFICATE OF

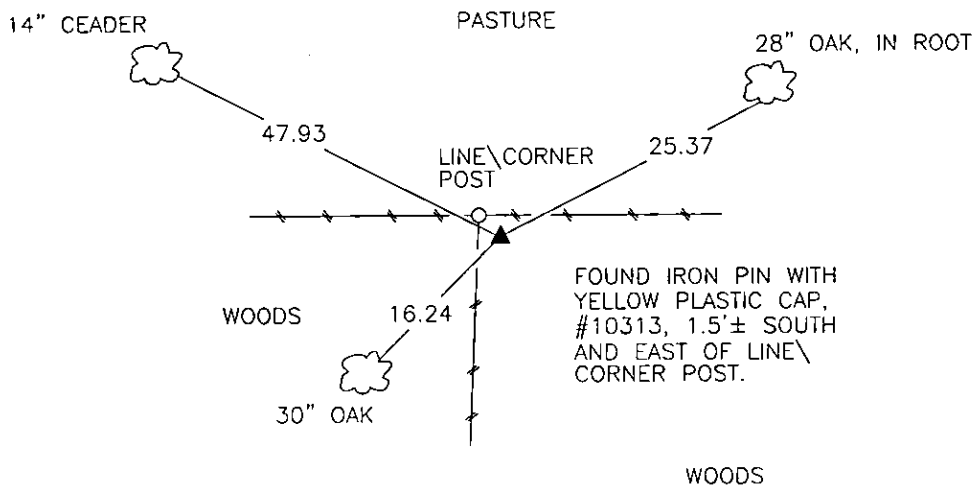
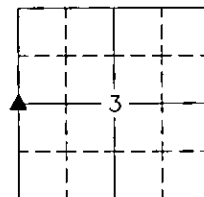
Land Survey Monuments situated in Section 3, Township 76 N, Range 27 W, of the Fifth Principal Meridian, Madison County, Iowa.  
Previously recorded in Book 1, Page 126 in County Recorder's Office.  
(book, page, document number, etc.)

(Show reason for preparing this certificate, the evidence and detailed procedures used in establishing the corner positions and monumentation found or placed.)

Monument Description and Remarks: Found iron pin with yellow plastic cap, #10313. Traversed from the southeast corner of the Northwest Quarter to the southwest corner of the Northwest Quarter to verify location. Accepted position. The reason for preparing this corner certificate is that the "x" nails in the blazed trees were not visible and one of the trees was cut down from previous corner certificate had be removed with the fence. Reset "x" nails in bazed trees.

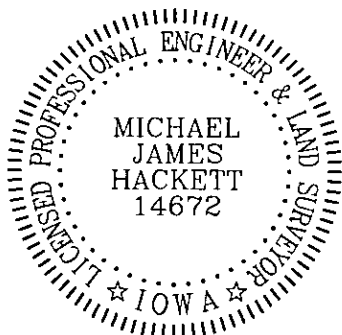
## PLAN VIEW

(Show a minimum of three reference ties to durable physical objects, relevant monuments and physical conditions that will enable recovery of the corner.)



SW. COR., NW. 1/4, SEC. 3

NOTE: ALL TIES TO "X" NAILS UNLESS NOTED



I hereby certify that this land surveying document was prepared and the related survey work was performed by me or under my direct personal supervision and that I am a duly Licensed Land Surveyor under the laws of the State of Iowa.

Signed Michael James Hackett Date 8/9/05  
Michael James Hackett

Iowa license number 14672.  
My license renewal date is 12/31/2006.  
Pages covered by this seal: 1.