

MICHELLE "MICKI" UTSLER. COUNTY RECORDER  
MADISON IOWA

HACKETT SURVEYING, Prepared By: Michael James Hackett, 803 East South Street, Winterset, Ia. 50273, Tel. (515) 462-1106

# UNITED STATES PUBLIC LAND SURVEY CORNER CERTIFICATE OF

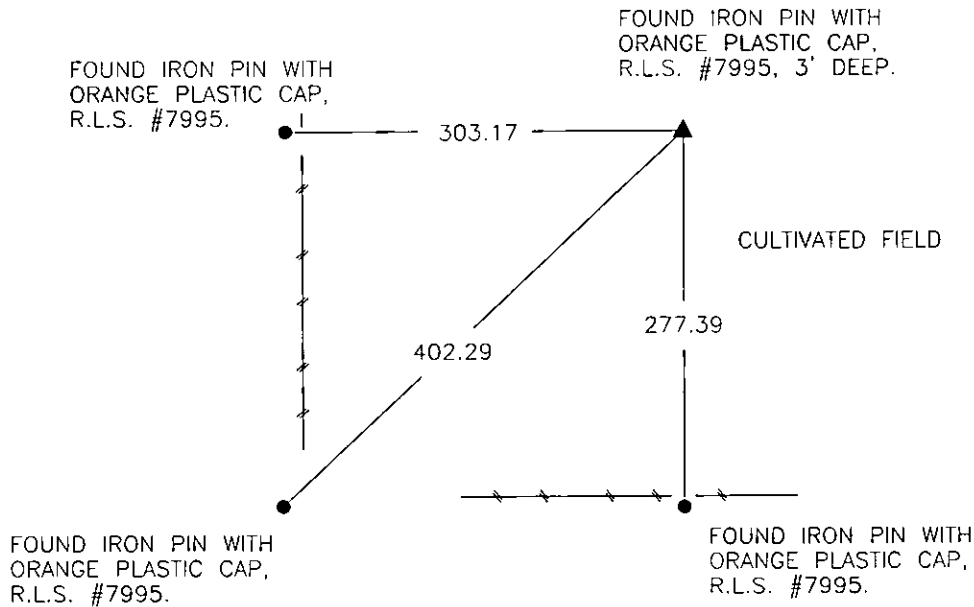
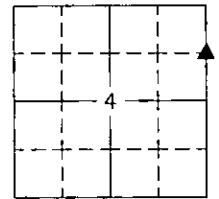
Land Survey Monuments situated in Section 4, Township 76 N, Range 27 W, of the Fifth Principal Meridian, Madison County, Iowa.  
Previously recorded in Book 1, Page 517 in County Recorder's Office.  
(book, page, document number, etc.)

(Show reason for preparing this certificate, the evidence and detailed procedures used in establishing the corner positions and monumentation found or placed.)

Monument Description and Remarks: Found iron pin with orange plastic cap, R.L.S. #7995, 3 foot deep.  
Traversed from the northeast corner of the Southeast Quarter of the Northeast Quarter to the northwest corner of the Southeast Quarter of the Northeast Quarter to verify location. Accepted position. The reason for preparing this corner certificate is that the ties previous corner certificate have changed.

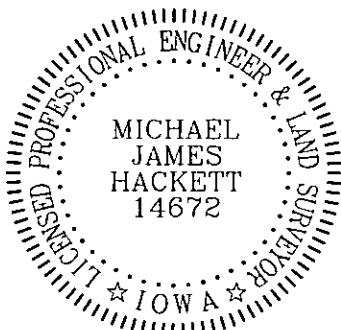
## PLAN VIEW

(Show a minimum of three reference ties to durable physical objects, relevant monuments and physical conditions that will enable recovery of the corner.)



NE. COR., SE. 1/4, NE. 1/4, SEC. 4

NOTE: ALL TIES TO "X" NAILS UNLESS NOTED



I hereby certify that this land surveying document was prepared and the related survey work was performed by me or under my direct personal supervision and that I am a duly Licensed Land Surveyor under the laws of the State of Iowa.

Signed Michael James Hackett Date 8/9/05  
Michael James Hackett

Iowa license number 14672.  
My license renewal date is 12/31/2006.  
Pages covered by this seal: 1.