

COMPUTER	<u>✓</u>
RECORDED	<u>✓</u>
COMPARED	<u>✓</u>

MICHELLE "MICKI" UTSLER, COUNTY RECORDER
MADISON IOWA

HACKETT SURVEYING, Prepared By: Michael James Hockett, 803 East South Street, Winterset, Ia. 50273, Tel. (515) 462-1106

UNITED STATES PUBLIC LAND SURVEY CORNER CERTIFICATE OF

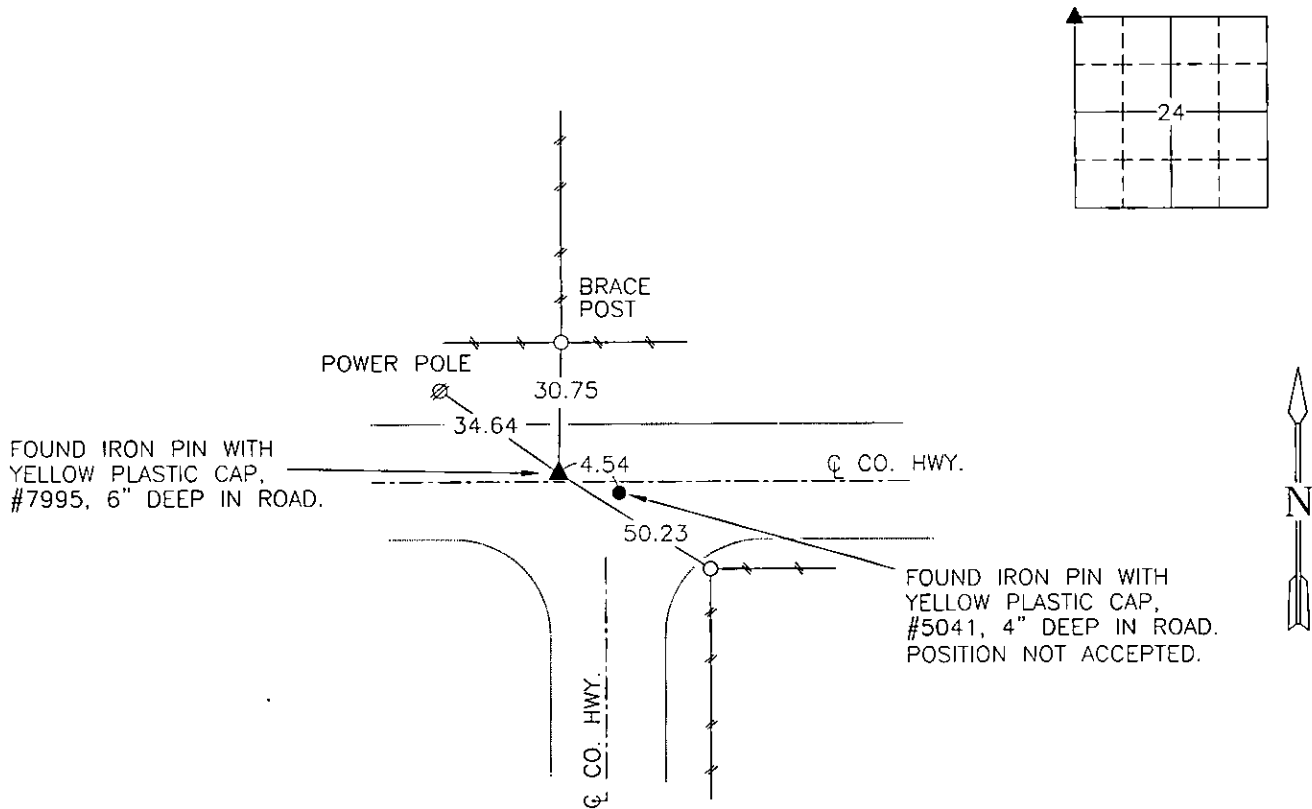
Land Survey Monuments situated in Section 24, Township 74 N, Range 28 W, of the Fifth Principal Meridian, Madison County, Iowa.
Previously recorded in Book 1, PAGE 352 in County Recorder's Office.
(book, page, document number, etc.)

(Show reason for preparing this certificate, the evidence and detailed procedures used in establishing the corner positions and monumentation found or placed.)

Monument Description and Remarks: Found iron pin with yellow plastic cap, #7955, 6" deep in road.
Traversed from the northwest corner of the Northwest Quarter to the northeast corner of the Northeast Quarter to
verify location. Accepted position. The reason for preparing this corner certificate is that the north tie from previous
corner certificate had changed. Found iron pin with yellow plastic cap, #5041, 4" deep, position not accepted.

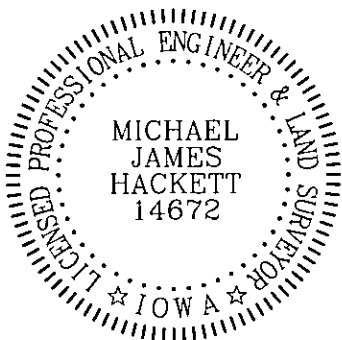
PLAN VIEW

(Show a minimum of three reference ties to durable physical objects, relevant monuments and physical conditions that will enable recovery of the corner.)



NW. COR., NW. 1/4, SEC. 24

NOTE: ALL TIES TO "X" NAILS UNLESS NOTED



I hereby certify that this land surveying document was prepared and the related survey work was performed by me or under my direct personal supervision and that I am a duly Licensed Land Surveyor under the laws of the State of Iowa.

Signed Michael James Hockett Date 8/9/05
Michael James Hockett

Iowa license number 14672.
My license renewal date is 12/31/2006.
Pages covered by this seal: 1.