

MICHELLE "MICKI" UTSLER, COUNTY RECORDER  
MADISON IOWA

COMPUTER	<input checked="" type="checkbox"/>
RECORDED	<input checked="" type="checkbox"/>
COMPARED	<input type="checkbox"/>

Daniels Land Surveying, 22598 18th Ave, New Virginia, IA 50210, 641-449-3259

# UNITED STATES PUBLIC LAND CORNER CERTIFICATE OF

Land Survey Monuments situated in Section 36, Township 74 N, Range 26 W, of the 5th P.M., Madison County, Iowa. Previously recorded in N.A. in County Recorders Office. (book, page, document number, etc.)

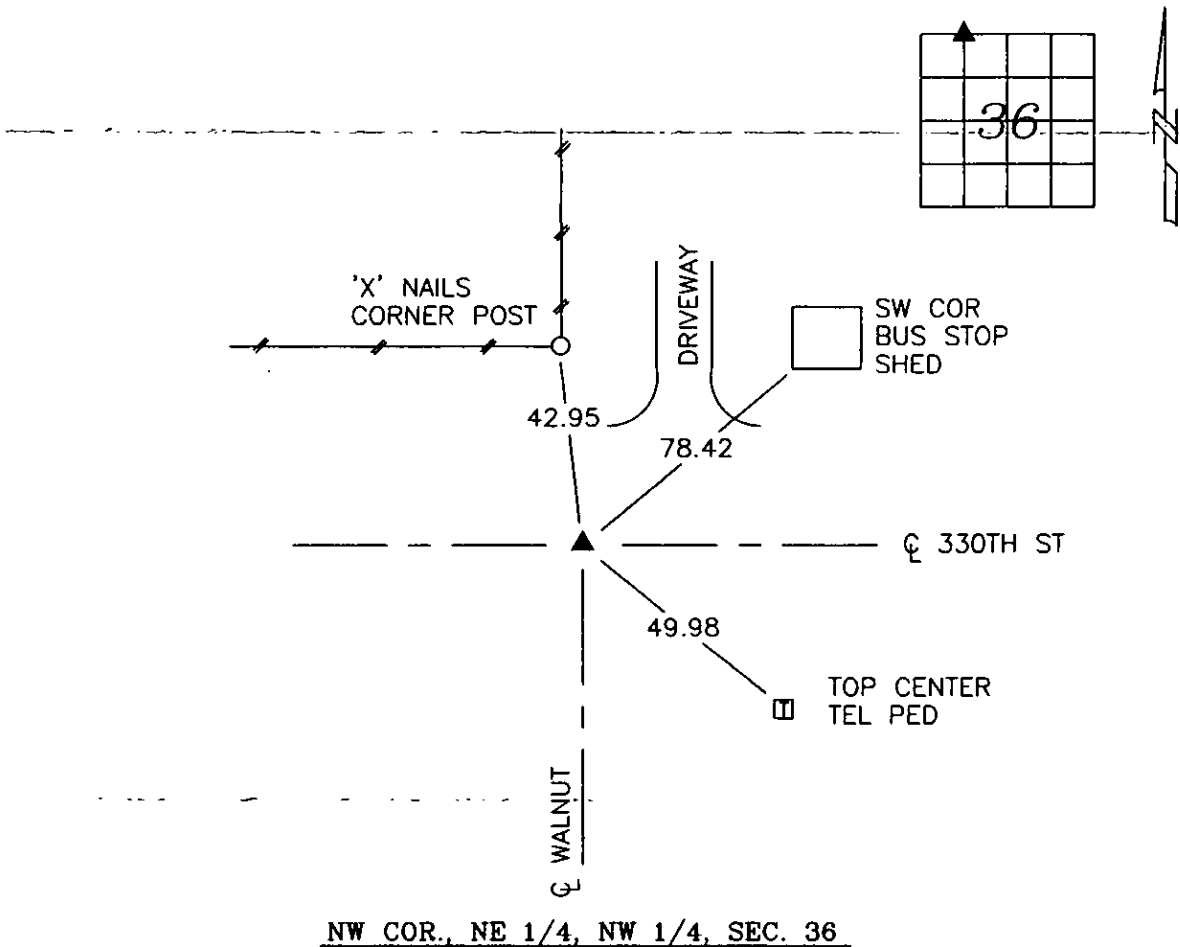
(Show reason for preparing this certificate, the evidence and detailed procedures used in establishing the corner positions and monumentation found or placed.)

Monument Description and Remarks:

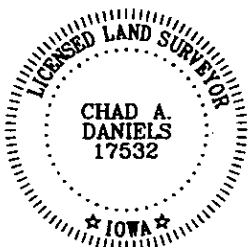
Found 3/4" pipe used as the corner in a previous survey. Accepted position.

## PLAN VIEW

(Show a minimum of three reference ties to durable physical objects, relevant monuments and physical conditions that will enable recovery of the corner.)



NW COR., NE 1/4, NW 1/4, SEC. 36



I hereby certify that this land surveying document was prepared and the related survey work was performed by me or under my direct personal supervision and that I am a duly licensed Land Surveyor under the laws of the State of Iowa.

Signature: Chad A. Daniels  
Chad A. Daniels

Date: 7/5/05

License number 17532  
My license renewal date is December 31, 2006