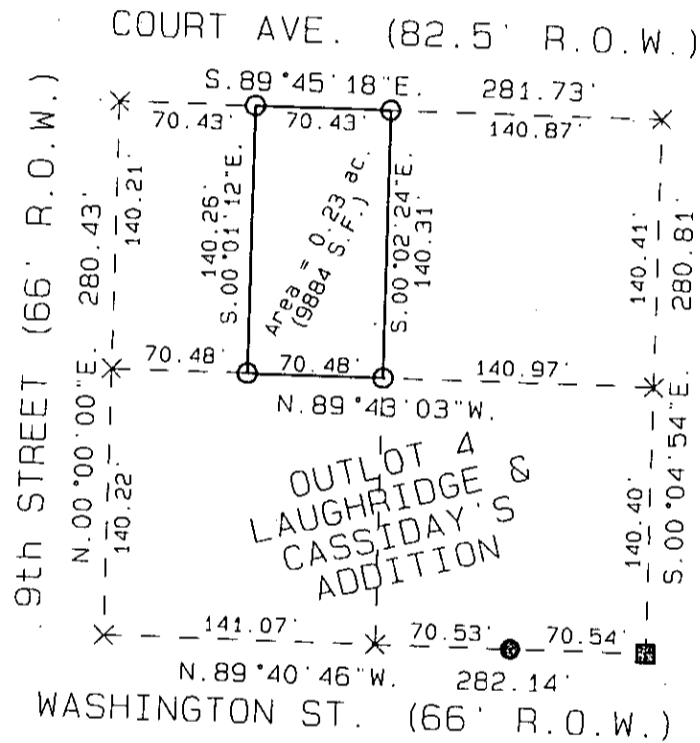


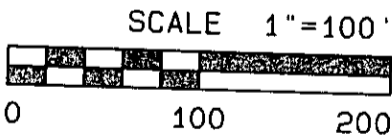
MICHELLE "MICKI" UTSLER, COUNTY RECORDER
MADISON IOWA

VANCE & HOCHSTETLER, P.C. CONSULTING ENGINEERS, WINTERSSET, IOWA (515) 462-3995
CHARLES T. VANCE, 110 WEST GREEN ST., WINTERSSET, IOWA 50273
JAMES M HOCHSTETLER, 110 WEST GREEN ST., WINTERSSET, IOWA 50273

A PLAT OF SURVEY FOR JIM DANCZEK LOCATED
IN THE EAST HALF OF THE NORTHWEST QUARTER
OF OUTLOT 4 OF LAUGHRIDGE & CASSIDAY'S
ADDITION TO THE CITY OF WINTERSSET, MADISON
COUNTY, IOWA.



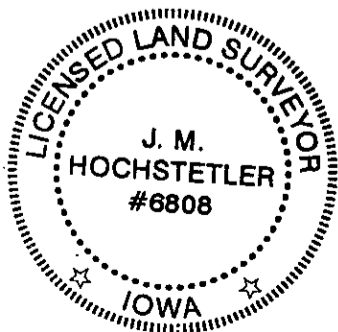
DATE OF SURVEY:
August 26, 2005



- LEGEND
- Fd. Capped Iron Rod (C.I.R.) #6808
 - Fd. 1/2" Iron Rod Set C.I.R. #6808
 - No Monument Set/Found
 - X Calc. Lot Line

LEGAL DESCRIPTION:

The East Half of the Northwest Quarter of Outlot 4 of Laughridge & Cassidy's Addition to the Town of Winterset, Madison County, Iowa.



I hereby certify that this land surveying document was prepared and the related survey work was performed by me or under my direct personal supervision and that I am a duly licensed Land Surveyor under the laws of the State of Iowa.

J.M. Hochstetler
J.M. HOCHSTETLER
License number 6808 Date 8/31/05
My license renewal date is December 31, 2005
Pages or sheets covered by this seal: 1