

MICHELLE "MICKI" UTSLER, COUNTY RECORDER
MADISON IOWA

COMPUTER
RECORDED
COMPARED

UNITED STATES PUBLIC LAND SURVEY CORNER CERTIFICATE
OF

Land Survey Monuments situated in Section 09, Township 77 North, Range 26 West, of the Fifth Principal Meridian, Madison County, Iowa.
Previously recorded in _____ in County Recorder's Office.
(book, page, document number, etc.)

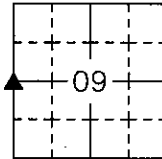
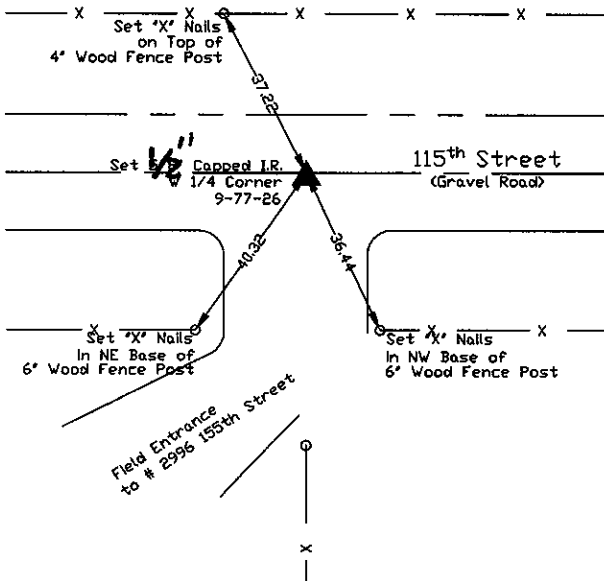
(Show reason for preparing this certificate, the evidence and detailed procedures used in establishing the corner positions and monumentation found or placed.)

Monument Description and Remarks: Set 5/8" Capped Iron Rebar
Cap # 7056

Monument re-established using the Double Proportionate Method

PLAN - VIEW

(Show a minimum of three reference ties to durable physical objects, relevant monuments and physical conditions that will enable recovery of the corner.)



I hereby certify that the survey work was completed and this land surveying document was prepared by me or under my direct personal supervision and that I am a duly registered land surveyor under the laws of the state of Iowa

Signature: Larry J. Richards
Name typed or printed: Larry J. Richards

Date: 6-28-05 Reg. No. 7056

My registration renewal date is December 31, 2006

Corners	Section	Twp	Range
W 1/4	09	T77N	R26W

SEAL

