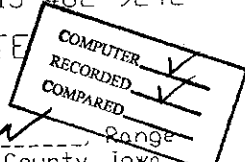


MICHELLE "MICKI" UTSLER, COUNTY RECORDER  
MADISON IOWA

RETURN TO : BOLDMAN LAND SURVEYING, P.C., BOX 66, WINTERSET, IA 50273 515-462-9242

# UNITED STATES PUBLIC LAND SURVEY CORNER CERTIFICATE

OF



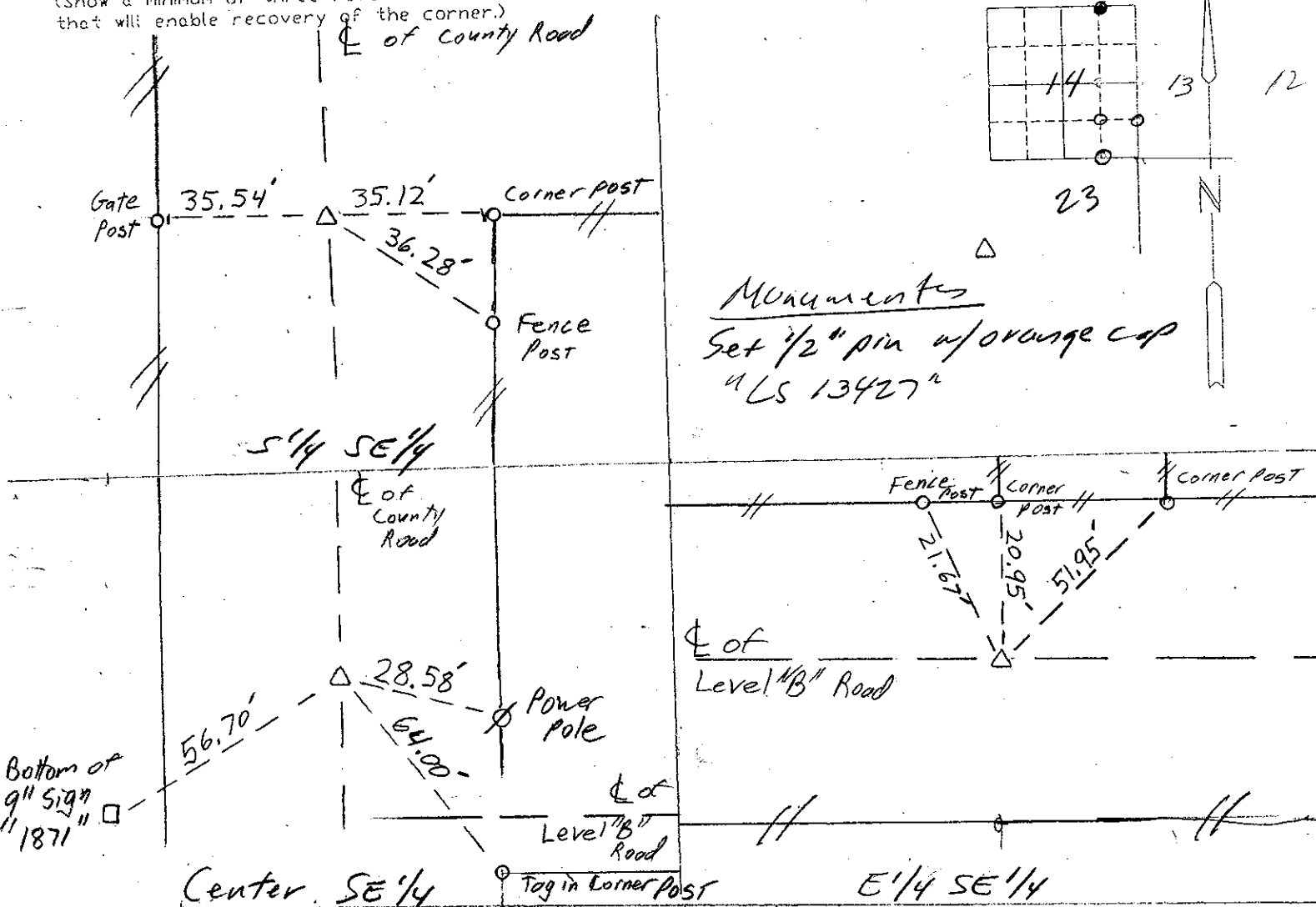
Land Survey Monuments situated in Section 14 Township 76 N Range 23  
SE 1/4 of the Fifth Principal Meridian Madison County, Iowa  
Previously recorded in None found In County Recorder's Office.  
(book, page, document number, etc.)

(Show reason for preparing this certificate, the evidence and detailed procedures used in establishing the corner positions and monumentation found or placed.)

Monument Description and Remarks: S 1/4 SE 1/4 - set @ split of R.O.W. fences  
in line w/ fence east. Center SE 1/4 - set @ 1/4 dist betn  
S 1/4 SE 1/4 and N 1/4 NE 1/4. E 1/4 SE 1/4 - Set @ split of Row fences  
All tied to pk nail and orange washer (New) unless noted other wise.  
in line w/ N-S fences

## PLAN-VIEW

(Show a minimum of three reference ties to durable physical objects, relevant monuments and physical conditions that will enable recovery of the corner.)



Monuments  
Set 1/2" pin w/ orange cap  
"LS 13427"

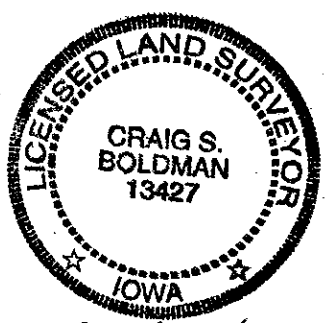
I hereby certify that the survey work was completed and this certificate was prepared by me or under my direct personal supervision and that I am a duly Licensed Land Surveyor under the laws of the State of Iowa

Signature: Craig S. Boldman  
Date: 5/23/05 Reg. No. 13427

### List Corners to be Indexed

Corners	Section	Twp	Range
S 1/4 SE 1/4	14	74	27
N 1/4 NE 1/4	23	74	27
E 1/4 SE 1/4	14	74	27
W 1/4 SW 1/4	13	74	27
Center SE 1/4	14	74	27

SEAL



Project 05042

Expires 12/31/06