

COMPUTER	<input checked="" type="checkbox"/>
RECORDED	<input checked="" type="checkbox"/>
COMPARED	<input type="checkbox"/>

MICHELLE "MICKI" UTSLER, COUNTY RECORDER  
MADISON IOWA

Prepared By: J. Brian Morrissey, Morrissey Surveying, 1405 Hwy. G28, Otley, Ia. 50214, Tel. (641) 627-5554

# UNITED STATES PUBLIC LAND SURVEY CORNER CERTIFICATE OF

Land Survey Monuments situated in Section 31, Township 75N, Range 26W, of the Fifth Principal Meridian, Madison County, Iowa.  
Previously recorded in N.A. in County Recorders Office.

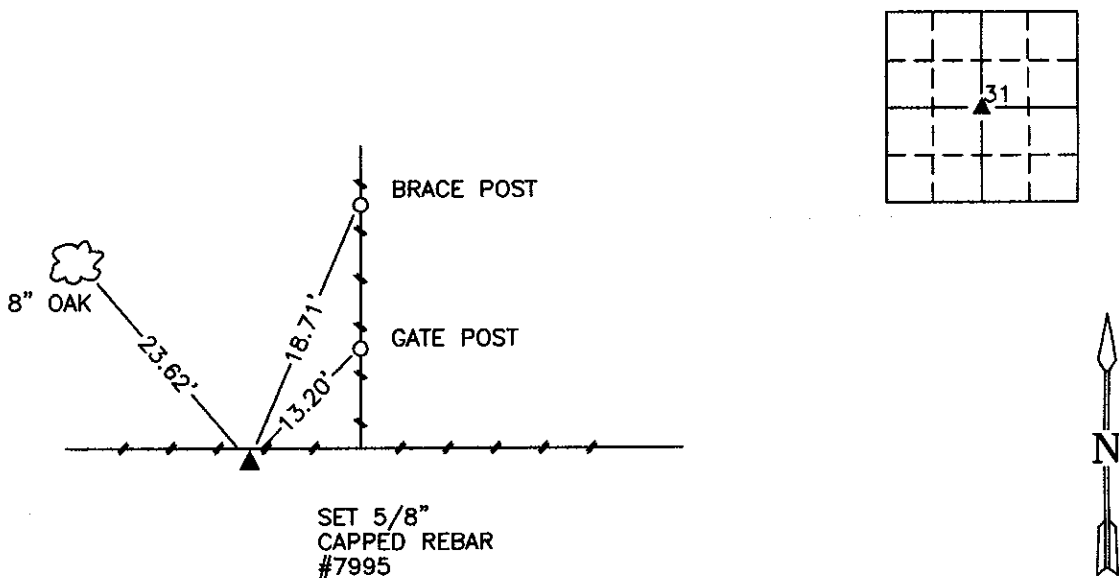
(book, page, document number, etc.)

(Show reason for preparing this certificate, the evidence and detailed procedures used in establishing the corner positions and monumentation found or placed.)

Monument Description and Remarks: Set 5/8" x 18" orange plastic capped rebar, #7995, at intersection of East-West fence and line from found North 1/4 Corner to SW Corner, NW 1/4 of the NE 1/4.

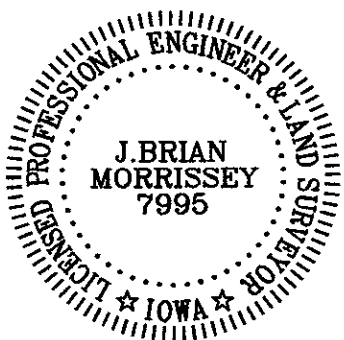
## PLAN VIEW

(Show a minimum of three reference ties to durable physical objects, relevant monuments and physical conditions that will enable recovery of the corner.)



NW COR NW 1/4 SE 1/4 SEC 31

NOTE: ALL TIES TO "X" NAILS UNLESS NOTED.



I hereby certify that the survey work was completed and this certificate was prepared by me or under my direct personal supervision and that I am a duly Licensed Land Surveyor under the laws of the State of Iowa.

Signature: J. Brian Morrissey Date: 6/14/05  
J. Brian Morrissey

License number 7995.  
My license renewal date is December 31, 2006