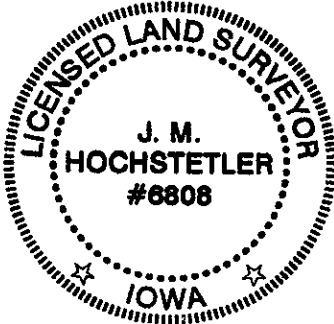
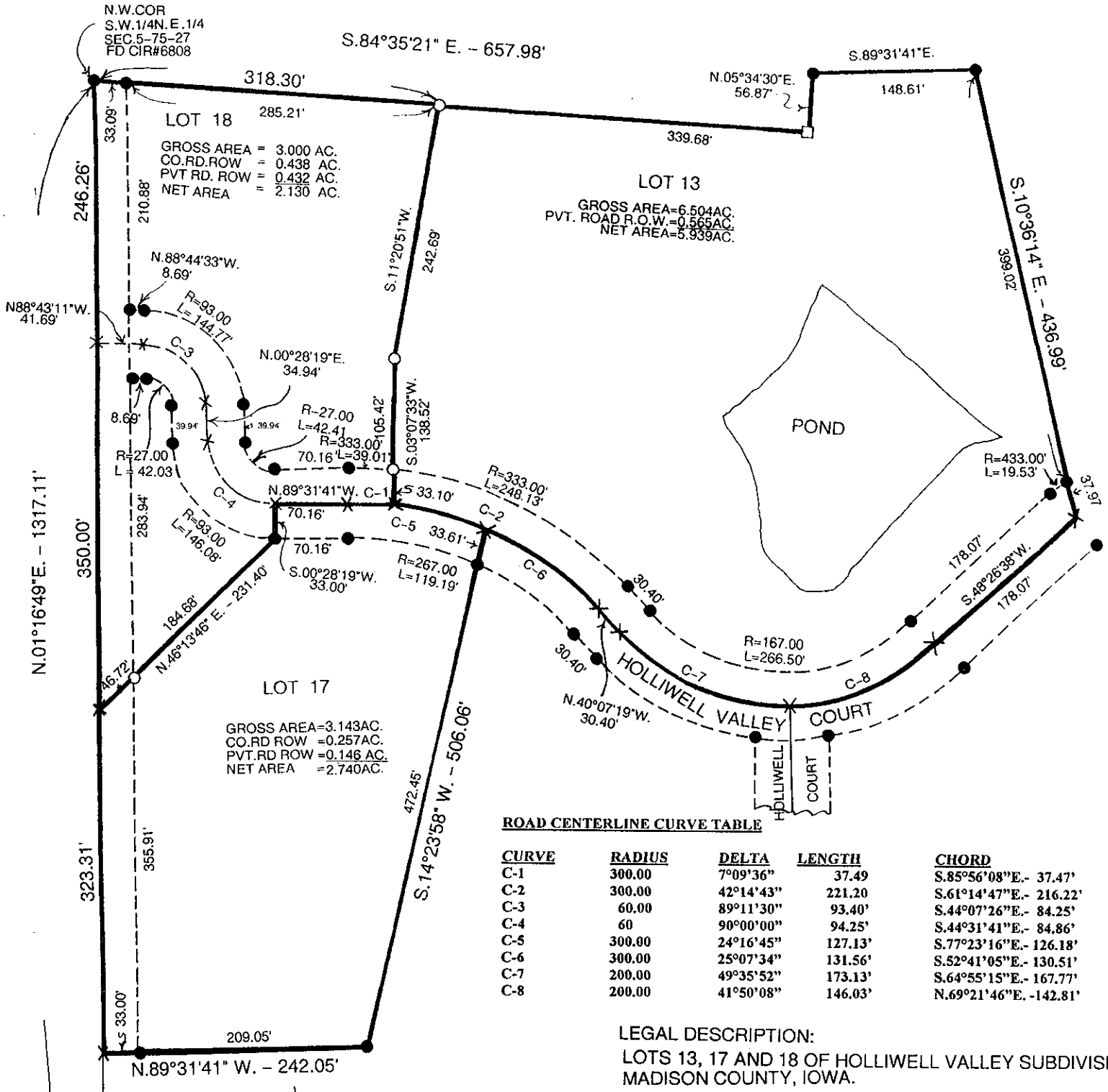


COMPUTER
 RECORDED
 COMPARED

MICHELLE "MICKI" UTSLER, COUNTY RECORDER
 MADISON IOWA

VANCE & HOCHSTETLER, P.C. CONSULTING ENGINEERS, WINTERSET, IOWA (515) 462-3995
 CHARLES T. VANCE, 110 WEST GREEN ST., WINTERSET, IOWA 50273
 JAMES M HOCHSTETLER, 110 WEST GREEN ST., WINTERSET, IOWA 50273

AMENDMENT TO HOLLIWELL VALLEY SUBDIVISION, MADISON COUNTY, IOWA
 TO CHANGE THE LOT DIMENSIONS AND AREA OF LOTS 13, 17 AND 18 THEREOF.



I hereby certify that this land surveying document was prepared and the related survey work was performed by me or under my direct personal supervision and that I am a duly licensed Land Surveyor under the laws of the State of Iowa.

J.M. Hochstetler
 J.M. HOCHSTETLER
 License number 6808 Date 5/18/05
 My license renewal date is December 31, 2005
 Pages or sheets covered by this seal: 1

DATE OF SURVEY: 5-18-05
 CAPPED IRON ROD (CIR)#6808 SET
 ● CIR #6808 FOUND
 ■ CIR # 14672 FOUND
 --- ROAD ROW LINES
 X CALCULATED POINT (NOTHING SET)

SCALE: 1" = 100'

CENTER SEC. 5-75-27 FD. CIR#14672