

REC \$ 50
 AUD \$ 10
 R.M.F. \$ 50

FILED NO. 6049

BOOK 2003 PAGE 6049

2003 OCT -7 PM 4: 14

COMPUTER	<input checked="" type="checkbox"/>
RECORDED	<input checked="" type="checkbox"/>
COMPARED	<input type="checkbox"/>

MICKI UTSLER
 RECORDER

\$5.00 + \$15.00 + \$5.00 = \$25.00

VANCE & HOCHSTETLER, P.C., CONSULTING ENGINEERS, WINTERSSET, IOWA (515) 462-3995
 03-1865
 KOPASKA
 CHARLES T. VANCE, 110 West Green St., Winterset, Iowa, 50273
 JAMES M HOCHSTETLER, 110 West Green St., Winterset, Iowa 50273

UNITED STATES PUBLIC LAND SURVEY CORNER CERTIFICATE

Land Survey Monuments situated in Section 7 OF 7 Township 77 N Range 29 W of the Fifth Principal Meridian, MADISON County, Iowa. Previously recorded in _____ in County Recorder's Office. (book, page, document number, etc.)

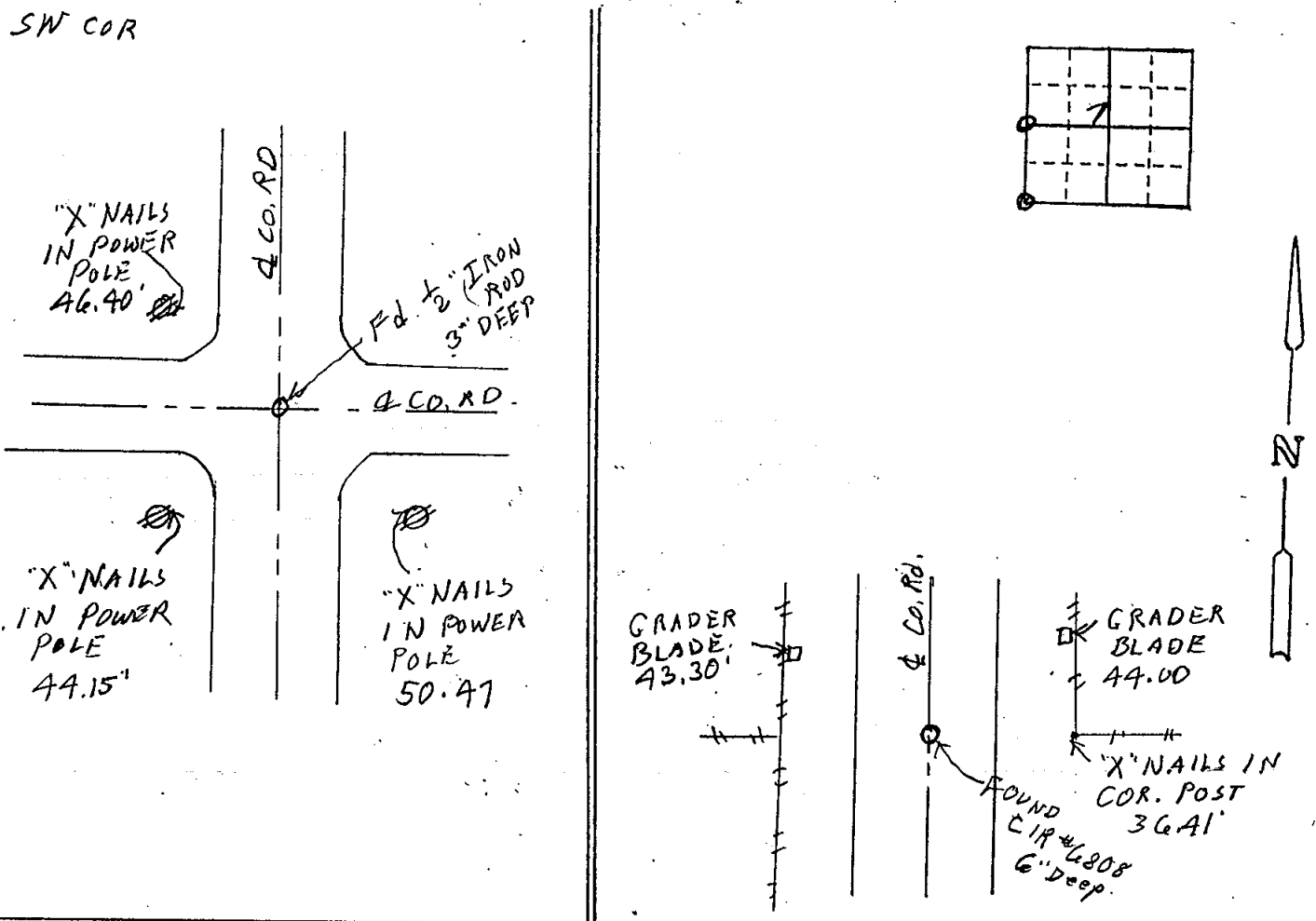
(Show reason for preparing this certificate, the evidence and detailed procedures used in establishing the the corner positions and monumentation found or placed.)

Monument Description and Remarks: SW. Cor. - Found 1/2" Iron Rod 3" deep set by Vance at 4-way intersection of County Roads for a Survey of SE 1/4 Section 12-77-30 Adair County, Cap on original pin had been destroyed.
W 1/4 Cor. - Found CIR #6808 set for a survey in Madison County at Co. Rd. Row in line with property line fences to East and West. Same point used by Vance for survey of SE 1/4 of Section 12-77-30 Adair County.

PLAN - VIEW

(Show a minimum of three reference ties to durable physical objects, relevant monuments and physical conditions that will enable recovery of the corner.)

SW COR



List Corners to be Indexed

Corners	Section	Twp	Range
SW COR	7	77N	29W
W 1/4 Cor.	7	77N	29W

I hereby certify that this land surveying document was prepared and the related survey work was performed by me or under my direct personal supervision and that I am a duly licensed Land Surveyor under the laws of the State of Iowa.

J.M. Hochstetler
 J.M. HOCHSTETLER
 License number 6808 Date 9/25/03
 My license renewal date is December 31, 2003
 Pages or sheets covered by this seal: 1

