

REC \$ 10⁰⁰
 AUD \$
 R.M.F. \$ 5⁰⁰

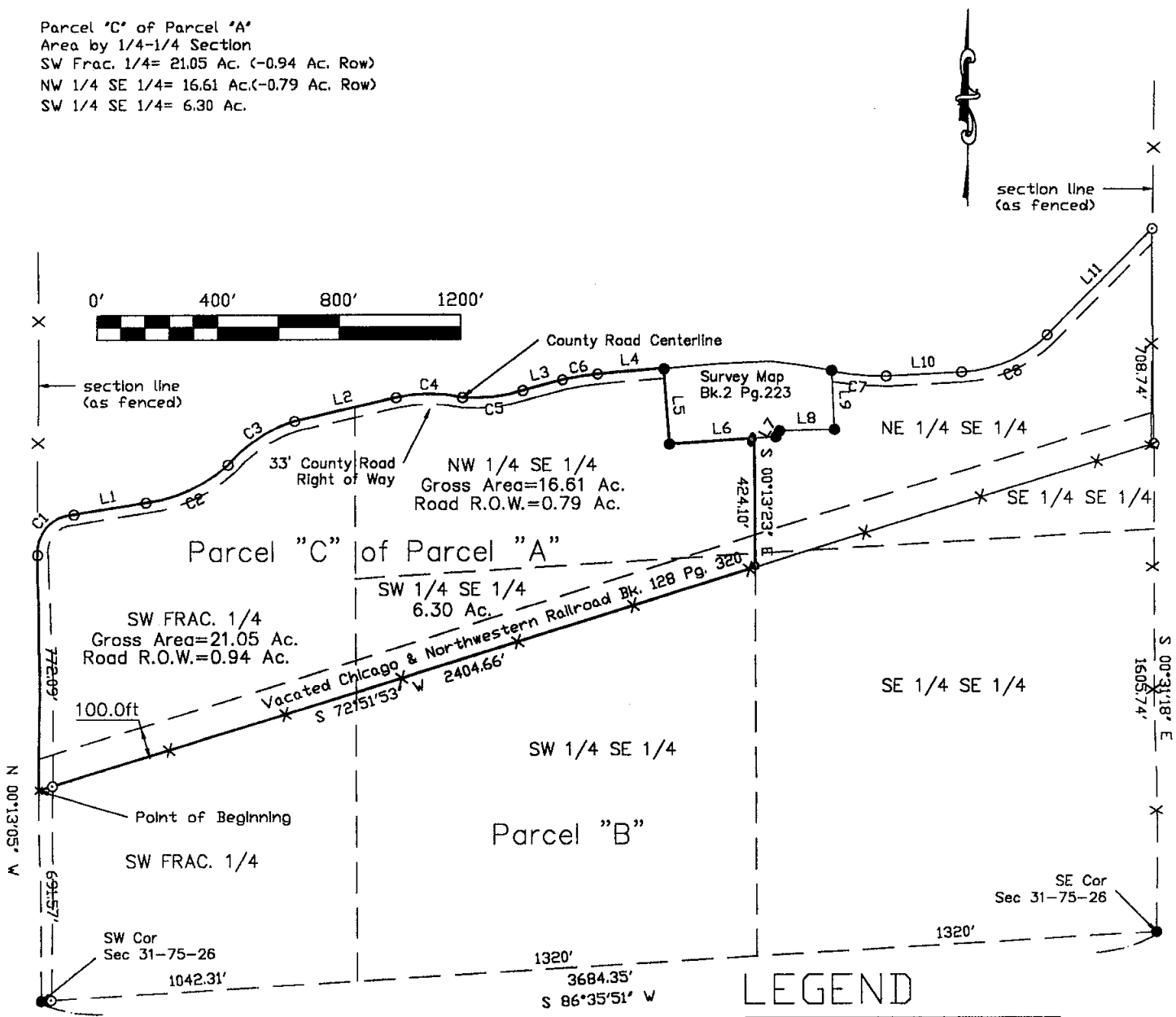
FILED NO. 5819
 BOOK 2003 PAGE 5819
 2003 SEP 29 AM 11:43

COMPUTER
 RECORDED
 COMPARED

MICKI UTSLER
 RECORDER
 HADISON COUNTY, IOWA

Prepared by: Boldman Land Surveying, L.L.C., P.O. Box 66, Winterset, Ia. 50273. (515)462-9242

Parcel "C" of Parcel "A"
 Area by 1/4-1/4 Section
 SW Frac. 1/4= 21.05 Ac. (-0.94 Ac. Row)
 NW 1/4 SE 1/4= 16.61 Ac.(-0.79 Ac. Row)
 SW 1/4 SE 1/4= 6.30 Ac.

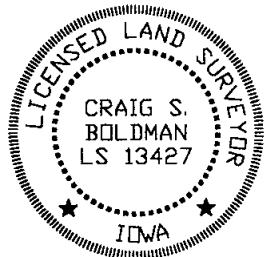


LINE	BEARING	DISTANCE
L1	N 80°36'15" E	238.33'
L2	N 77°08'39" E	343.24'
L3	N 75°02'59" E	135.93'
L4	N 85°14'55" E	219.78'
L5	S 04°06'12" E	248.97'
L6	N 86°11'51" E	352.19'

CURVE	RADIUS	ARC LENGTH	CHORD LENGTH	CHORD BEARING	DELTA ANGLE	TANGENT
C1	121.38'	198.72'	177.26'	N 42°13'03" E	93°48'19"	129.72'
C2	491.86'	302.46'	297.72'	S 65°15'26" W	35°14'02"	156.19'
C3	486.63'	264.29'	261.05'	N 56°37'34" E	31°07'01"	135.49'
C4	525.97'	220.43'	218.82'	N 89°59'38" E	24°00'43"	111.86'
C5	516.78'	200.38'	199.13'	N 83°41'49" E	22°13'00"	101.47'
C6	962.53'	117.57'	117.49'	N 80°50'21" E	06°59'54"	58.86'

LEGEND

These standard symbols will be found in the drawing.
 —X—X— fence line
 ● found 1/2" rebar w/cap #5041
 ○ placed 1/2" rebar w/cap #13427



I HEREBY CERTIFY THAT THIS LAND SURVEYING DOCUMENT WAS PREPARED AND THE RELATED SURVEY WORK WAS PERFORMED BY ME OR UNDER MY DIRECT PERSONAL SUPERVISION AND THAT I AM A DULY LICENSED LAND SURVEYOR UNDER THE LAWS OF THE STATE OF IOWA.
 SIGNATURE: *Craig S. Boldman*
 NAME: CRAIG S. BOLDMAN
 DATE: 9/28/03
 MY LICENSE RENEWAL DATE IS: DECEMBER 31, 2004

Plat of Survey		
REQUESTED BY: Dave Chico	BOLDMAN LAND SURVEYING, L.L.C. P.O. BOX 66 WINTERSSET, IA, 50273 (515)462-9242	
SURVEYED 8/28/03	SCALE 1" = 400'	OWNER Dave Chico
PROJECT NO. 03073	DATE	

Prepared by: Boldman Land Surveying, L.L.C., P.O. Box 66, Winterset, Ia. 50273. (515)462-9242

Parcel "C" -- a Part of Parcel "A" in part of the Southwest Fractional Quarter (SW Frac.1/4) of Section 31, Township 75 North, Range 26 West of the 5th P.M., lying South of the County Road, Madison County, Iowa, described as follows:

Beginning At A Point That Is N 00 DEGREES 13 MINUTES 05 SECONDS, 619.57' from The Southwest Corner Of Said Section 31;

Thence N 00 DEGREES 13 MINUTES 05 SECONDS W A Distance Of 772.09' to an Intersection with the Centerline of a County Road;

Thence With A Curve

Turning To The Right

With An Arc Length Of 198.72',

With A Radius Of 121.38',

With A Chord Bearing Of N 42 DEGREES 13 MINUTES 03 SECONDS E,

With A Chord Length Of 177.26',

Thence N 80 DEGREES 36 MINUTES 15 SECONDS E A Distance Of 238.33';

Thence With A Curve

Turning To The Left

With An Arc Length Of 302.46',

With A Radius Of 491.86',

With A Chord Bearing Of N 65 DEGREES 15 MINUTES 26 SECONDS E,

With A Chord Length Of 297.72',

Thence With A Curve

Turning To The Right

With An Arc Length Of 264.29',

With A Radius Of 486.63',

With A Chord Bearing Of N 56 DEGREES 37 MINUTES 34 SECONDS E,

With A Chord Length Of 261.05',

Thence N 77 DEGREES 08 MINUTES 39 SECONDS E A Distance Of 343.24';

Thence With A Curve

Turning To The Right

With An Arc Length Of 220.43',

With A Radius Of 525.97',

With A Chord Bearing Of N 89 DEGREES 59 MINUTES 38 SECONDS E,

With A Chord Length Of 218.82',

Thence With A Curve

Turning To The Left

With An Arc Length Of 200.38',

With A Radius Of 516.78',

With A Chord Bearing Of N 83 DEGREES 41 MINUTES 49 SECONDS E,

With A Chord Length Of 199.13',

Thence N 75 DEGREES 02 MINUTES 59 SECONDS E A Distance Of 135.93';

Thence With A Curve

Turning To The Right

With An Arc Length Of 117.57',

With A Radius Of 982.53',

With A Chord Bearing Of N 80 DEGREES 50 MINUTES 21 SECONDS E,

With A Chord Length Of 117.49',

Thence N 85 DEGREES 14 MINUTES 55 SECONDS E A Distance Of 219.78';

Thence S 04 DEGREES 06 MINUTES 12 SECONDS E A Distance Of 248.97';

Thence N 86 DEGREES 11 MINUTES 51 SECONDS E A Distance Of 281.57';

Thence S 00 DEGREES 13 MINUTES 23 SECONDS E A Distance Of 424.10';

Thence S 72 DEGREES 51 MINUTES 53 SECONDS W A Distance Of 2404.66'

To the point of beginning. Containing 43.96 Acres of Land Including 1.73 Acres of County Road Right of Way.T