

2003 SEP 26 PM 12:18

REC \$ 5.00
AUD \$
R.M.F. \$ 5.00

COMPUTER	✓
RECORDED	✓
COMPARED	

MICKI UTSLER
RECORDER

3150 462 092 42, IOWA

RETURN TO: BOLDMAN LAND SURVEYING, P.C., BOX 66, WINTERSSET, IA 50273
UNITED STATES PUBLIC LAND SURVEY CORNER CERTIFICATE

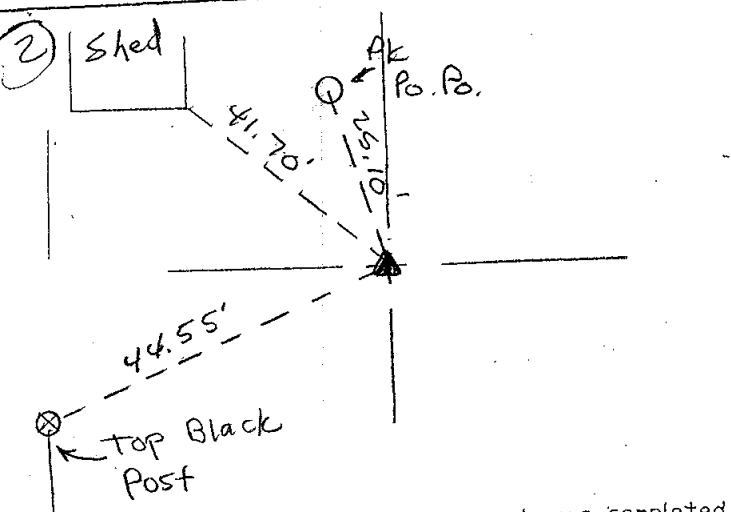
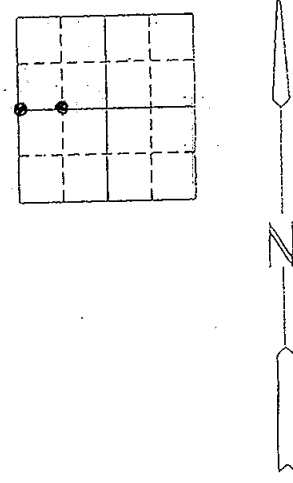
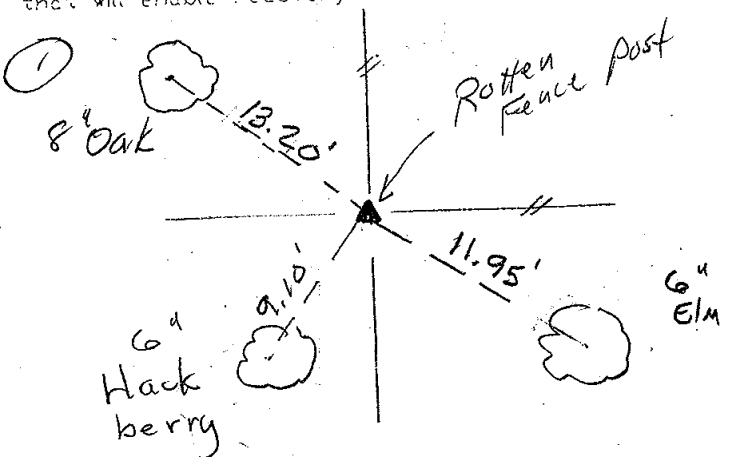
Land Survey Monuments situated in Section 20 of Township 75N, Range 26W, of the Fifth Principal Meridian, Madison County, Iowa
Previously recorded in None in County Recorder's Office.
(book, page, document number, etc.)

(show reason for preparing this certificate, the evidence and detailed procedures used in establishing the corner positions and monumentation found or placed.)

Monument Description and Remarks: ① Set 1/2" x 24" pin at fence post.
② Set RR spike at 1/4 distance betw NW 1/4 and E 1/4 corners.

PLAN-VIEW

(Show a minimum of three reference ties to durable physical objects, relevant monuments and physical conditions that will enable recovery of the corner.)



I hereby certify that the survey work was completed and this certificate was prepared by me or under my direct personal supervision and that I am a duly Licensed Land Surveyor under the laws of the State of Iowa

Signature: Craig S. Boldman
Craig S. Boldman

Date: 9/24/03 Reg. No. 13427

List Corners to be Indexed

Corners	Section	Twp	Range
W 1/4	20	75	26
NE Cor		"	"
NW 1/4 SW 1/4		"	"

SEAL

