

REC \$ 5.00  
AUD \$ \_\_\_\_\_  
R.M.F. \$ 7.00  
5.00

FILED NO. 6324  
BOOK 2003 PAGE 6324

COMPUTER   
RECORDED   
COMPARED \_\_\_\_\_

2003 OCT 21 AM 10:45

MICKI UTSLER  
RECORDER  
MADISON COUNTY, IOWA

HACKETT SURVEYING, Prepared By: Michael James Hackett, 803 East South Street, Winterset, Ia. 50273, Tel: (515) 462-1106

# UNITED STATES PUBLIC LAND SURVEY CORNER CERTIFICATE OF

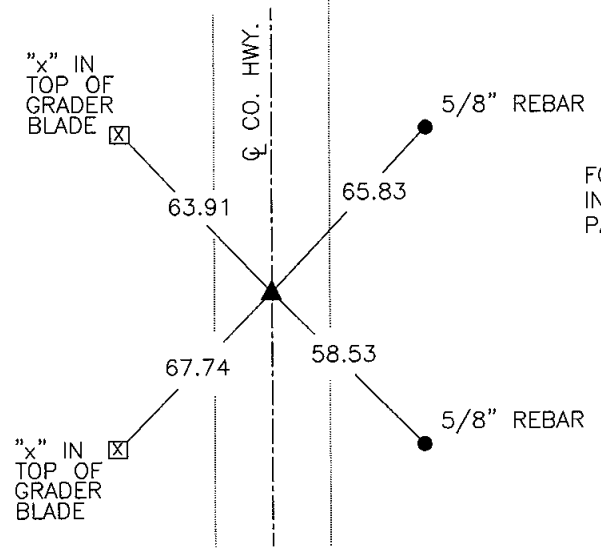
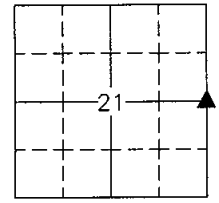
Land Survey Monuments situated in Section 21, Township 75 N, Range 29 W, of the Fifth Principal Meridian, Madison County, Iowa. Previously recorded in N/A in County Recorder's Office. (book, page, document number, etc.)

(Show reason for preparing this certificate, the evidence and detailed procedures used in establishing the corner positions and monumentation found or placed.)

Monument Description and Remarks: Found P.K. nail in center line of pavement of county highway.  
Traversed the south half of section to verify location of the corner. The distance from the southeast corner of the Southeast Quarter to the northeast corner of the Southeast Quarter checked reasonably close to the distances on file in Survey Book 2, Page 241 and Book 3, Page 285 in the Madison County Engineer's Office. Accepted position.

## PLAN VIEW

(Show a minimum of three reference ties to durable physical objects, relevant monuments and physical conditions that will enable recovery of the corner.)

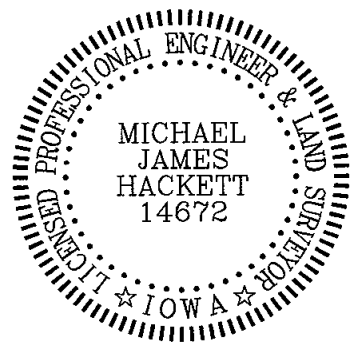


FOUND P.K. NAIL IN  
IN CENTER LINE OF  
PAVEMENT OF COUNTY HWY.



NE. COR., SE. 1/4, SEC. 21

NOTE: ALL TIES TO "X" NAILS UNLESS NOTED



I hereby certify that this land surveying document was prepared and the related survey work was performed by me or under my direct personal supervision and that I am a duly Licensed Land Surveyor under the laws of the State of Iowa.  
Signed Michael James Hackett Date 10/21/03  
Michael James Hackett

Iowa license number 14672.  
My license renewal date is 12/31/2004.  
Pages covered by this seal: 1.