

FILED NO. **5102**  
 BOOK 2003 PAGE 5102  
 2003 AUG 27 AM 11:49

REC \$ 5<sup>00</sup>  
 AUD \$ 5<sup>00</sup>  
 R.M.F. \$ 5<sup>00</sup>

COMPUTER	<input checked="" type="checkbox"/>
RECORDED	<input checked="" type="checkbox"/>
COMPARED	<input type="checkbox"/>

MICKI UTSLER  
 RECORDER  
 MADISON COUNTY, IOWA

# UNITED STATES PUBLIC LAND SURVEY CORNER CERTIFICATE OF

Land Survey Monuments situated in Section 9, Township 74 NORTH, Range 26 WEST, of the Fifth Principal Meridian, MADISON County, Iowa. Previously recorded in BOOK 1, PAGE 79 (EAST 1/4 CORNER) in County Recorder's Office.  
(book, page, document number, etc.)

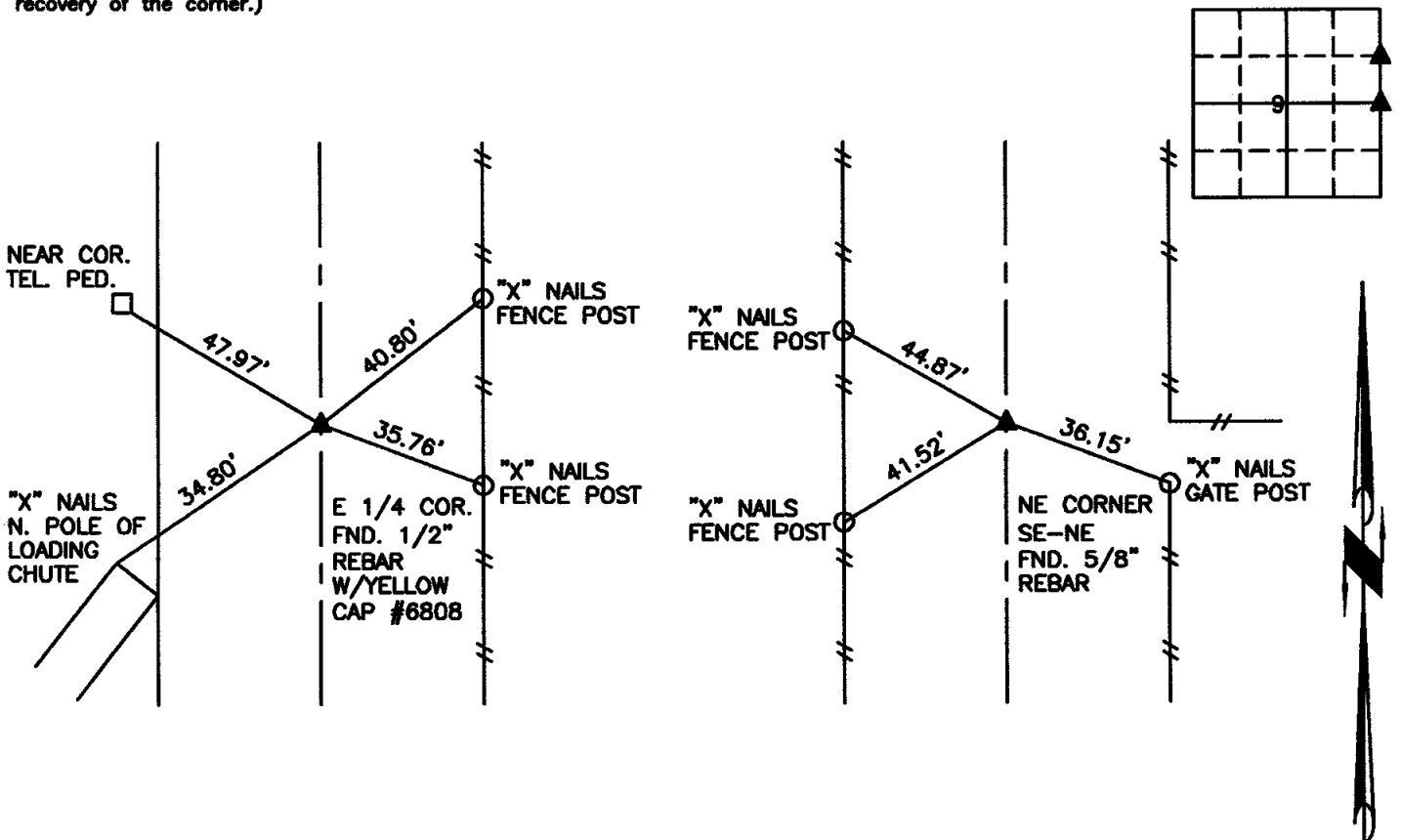
(Show reason for preparing this certificate, the evidence and detailed procedures used in establishing the corner positions and monumentation found or placed.)

**Monument Description and Remarks:** E 1/4 CORNER, SECTION 9-74-26, FOUND 1/2" REBAR WITH CAP #6808 USING RECORDED CORNER CERTIFICATE: NE CORNER, SE-NE, SECTION 9-74-26, FOUND 5/8" REBAR USING A RECORDED PLAT OF SURVEY, RECORDED IN BOOK 3 AT PAGE 456

PREPARED FOR MONUMENTS USED FOR A PLAT OF SURVEY.

### PLAN - VIEW

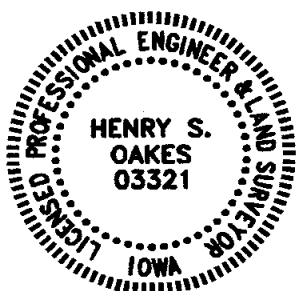
(Show a minimum of three reference ties to durable physical objects, relevant monuments and physical conditions that will enable recovery of the corner.)



I hereby certify that the survey work was completed and this certificate was prepared by me or under my direct personal supervision and that I am a duly licensed land surveyor under the laws of the state of Iowa. My license renewal date is December 31, 2003.

Signature: *Henry S. Oakes*  
 Name typed or printed: Henry S. Oakes

Date: 8-25-03 License No. 3321



SEAL

#### List Corners to be Indexed

Corners	Section	Twp	Range
E 1/4 COR.	9	74	26
NE CORNER SE-NE	9	74	26