

MICKI UTSLER
RECORDER
MADISON COUNTY, IOWA

REC \$ 5.00
AUD \$ 1.00
R.M.F. \$ 5.00
5/15/03

COMPUTER	<input checked="" type="checkbox"/>
RECORDED	<input checked="" type="checkbox"/>
COMPARED	<input type="checkbox"/>

RETURN TO: BOLDMAN LAND SURVEYING, P.C., BOX 66, WINTERSSET, IA 50273 515-462-9242

UNITED STATES PUBLIC LAND SURVEY CORNER CERTIFICATE

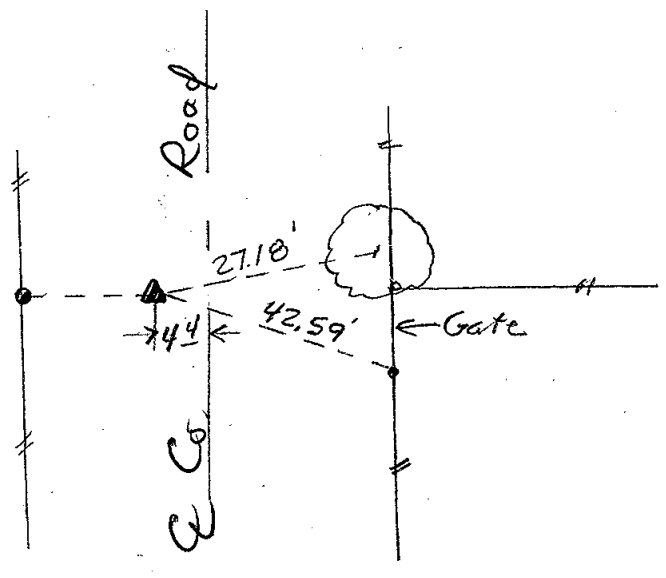
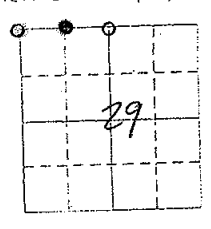
Land Survey Monuments situated in Section 29 Township 75 N Range 26 W
 of the Fifth Principal Meridian, MADISON County, Iowa
 Previously recorded in None Found In County Recorder's Office.
 (book, page, document number, etc.)

(show reason for preparing this certificate, the evidence and detailed procedures used in establishing the corner positions and monumentation found or placed.)

Monument Description and Remarks: Set track spike at split distance

PLAN-VIEW

(Show a minimum of three reference ties to durable physical objects, relevant monuments and physical conditions that will enable recovery of the corner.)



I hereby certify that the survey work was completed and this certificate was prepared by me or under my direct personal supervision and that I am a duly Licensed Land Surveyor under the laws of the State of Iowa

Signature: Craig S. Boldman
Craig S. Boldman

Date: 9/15/03 Reg. No. 13427

List Corners to be Indexed

Corners	Section	Twp	Range
NE cor			
NW 1/4 NW 1/4		29-75-	26

SEAL

