

2003 JUL 25 PM 4: 06

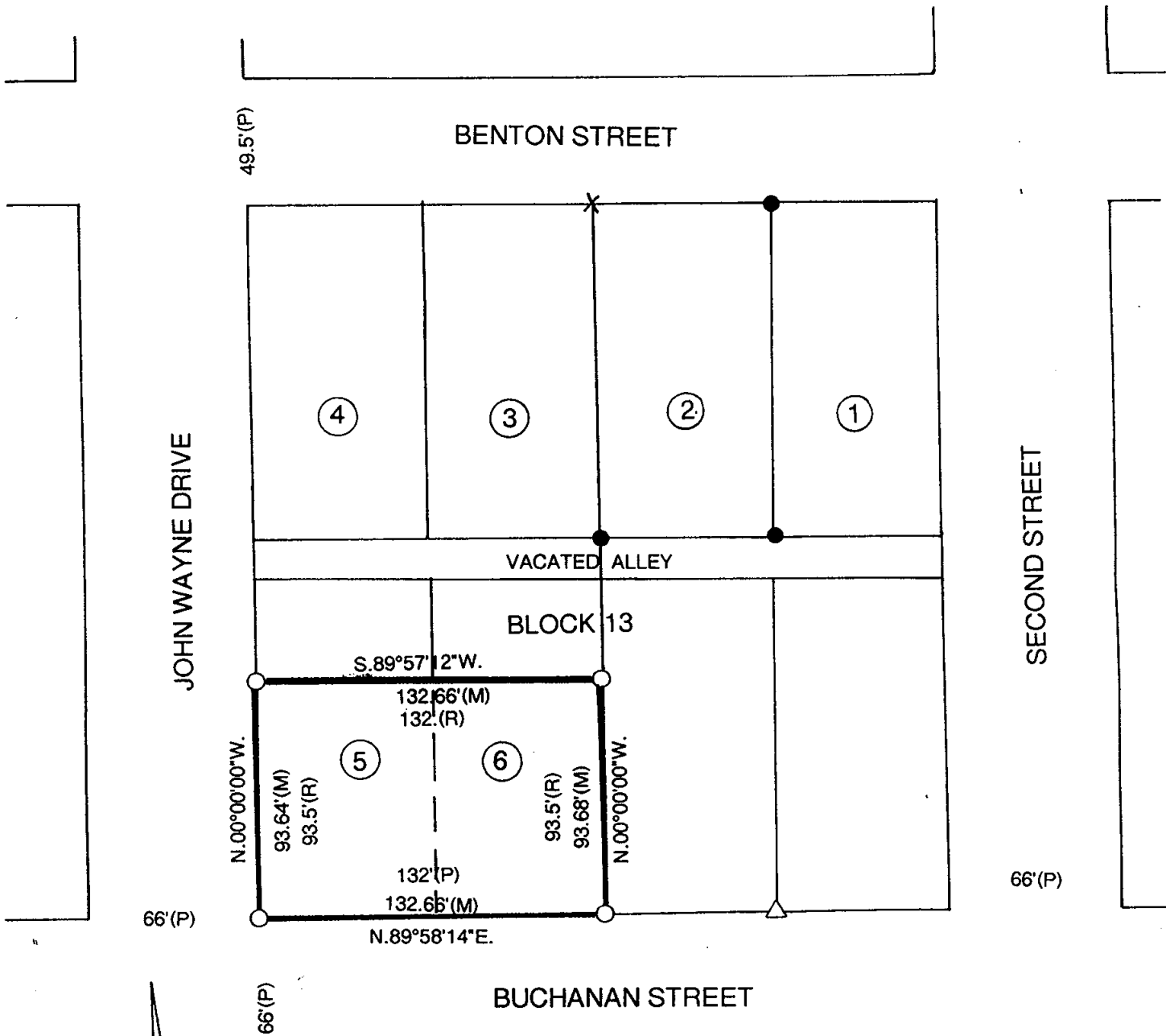
REC \$ 5.00  
AUD \$ 5.00  
R.M.F. \$ 5.00

COMPUTER   
RECORDED   
COMPARED

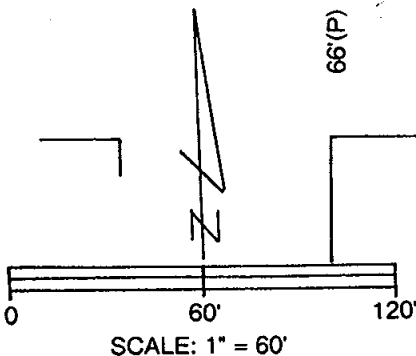
MICKI UTSLER  
RECORDER  
MADISON COUNTY, IOWA

VANCE & HOCHSTETLER, P.C. CONSULTING ENGINEERS, WINTERSET, IOWA (515) 462-3995  
CHARLES T. VANCE, 110 WEST GREEN ST., WINTERSET, IOWA 50273  
JAMES M HOCHSTETLER, 110 WEST GREEN ST., WINTERSET, IOWA 50273

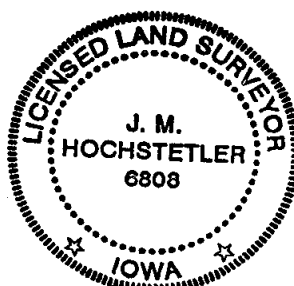
PLAT OF SURVEY OF THE SOUTH 93 1/2 FEET OF LOTS 5 AND 6  
BLOCK 13, PITZER & KNIGHT'S ADDITION TO THE CITY OF WINTERSET,  
MADISON COUNTY, IOWA OWNED BY KEVIN P. CLARKE.



LEGAL DESCRIPTION:  
The South 93 1/2 feet of Lots 5 and 6 of  
Block 13, Pitzer & Knight's Addition to the City of  
Winterset, Madison County, Iowa.



- CAPPED IRON ROD(CIR)#6808 SET
- 5/8" IRON ROD FOUND
- X "X" IN CONCRETE FOUND
- (M) MEASURED DISTANCE
- (P) PLATTED DISTANCE



I hereby certify that this land surveying document was prepared and the related survey work was performed by me or under my direct personal supervision and that I am a duly licensed Land Surveyor under the laws of the State of Iowa.

*J.M. Hochstetler*  
J.M. HOCHSTETLER  
Licence number 0000 Date 7/11/03  
My license renewal date is December 31, 2007  
Pages or sheets covered by this seal: 1