

REC \$ 5.00  
 AUD \$ \_\_\_\_\_  
 R.M.F. \$ 1.00

COMPUTER   
 RECORDED   
 COMPARED

MICHI UTSLER  
 RECORDER  
 515-462-9242 IOWA

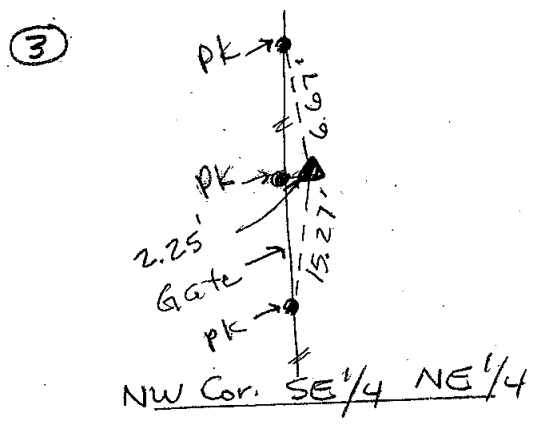
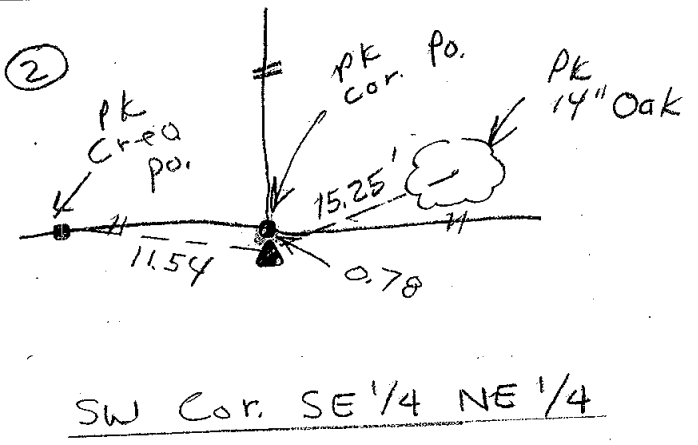
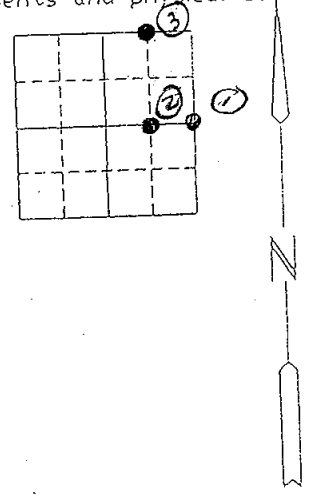
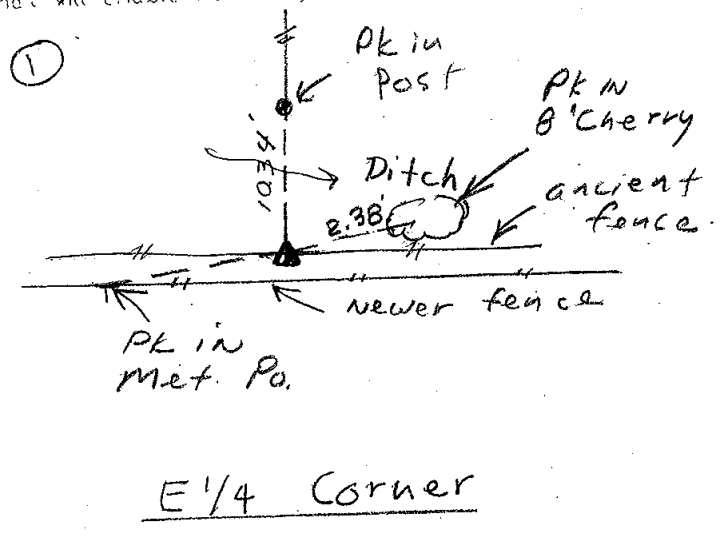
RETURN TO: BOLDMAN LAND SURVEYING, P.C., BOX 66, WINTERSSET, IA 50273  
 UNITED STATES PUBLIC LAND SURVEY CORNER CERTIFICATE

Land Survey Monuments situated in Section 8, Township 74N, Range \_\_\_\_\_  
26W, of the Fifth Principal Meridian, Madison County, Iowa  
 Previously recorded in None In County Recorder's Office.  
 (book, page, document number, etc.)

(show reason for preparing this certificate, the evidence and detailed procedures used in establishing the corner positions and monumentation found or placed.)

Monument Description and Remarks: ① set 1/2" x 24" reb. & orange cap at inter. of N-S fence & ancient E-W fence ② same as ①. ③ Set at split dist. betw SW cor SE 1/4 NE 1/4 and NW cor. NE 1/4 SE 1/4 Sec. 8. Loc. agrees w/ 80 rod gate fence  
 PLAN-VIEW

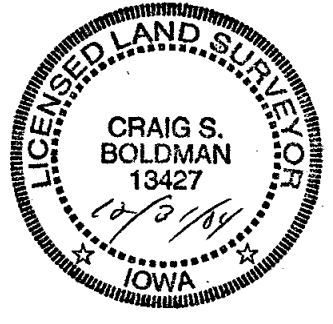
(Show a minimum of three reference ties to durable physical objects, relevant monuments and physical conditions that will enable recovery of the corner.)



I hereby certify that the survey work was completed and this certificate was prepared by me or under my direct personal supervision and that I am a duly Licensed Land Surveyor under the laws of the State of Iowa

Signature: Craig S. Boldman  
 Craig S. Boldman

Date: 6/3/03 Reg. No. 13427



SEAL

List Corners to be Indexed

Corners	Section	Twp	Range
E 1/4 Cor	8	74	26
SW Cor	"	"	"
SE 1/4 NE 1/4	"	"	"
NW Cor	"	"	"
SE 1/4 NE 1/4	"	"	"