



REC \$ 5⁰⁰
 AUD \$ 1⁰⁰
 R.M.F. \$ 1⁰⁰

FILED NO. 001451
 BOOK 2003 PAGE 1451

2003 MAR 14 PM 3:46

MICKI UTSLER
 RECORDER
 MADISON COUNTY, IOWA

COMPUTER
 RECORDED
 COMPARED

RETURN TO : BOLDMAN LAND SURVEYING, P.C., BOX 66, WINTERSET, IA 50273 515-462-9242
 UNITED STATES PUBLIC LAND SURVEY CORNER CERTIFICATE

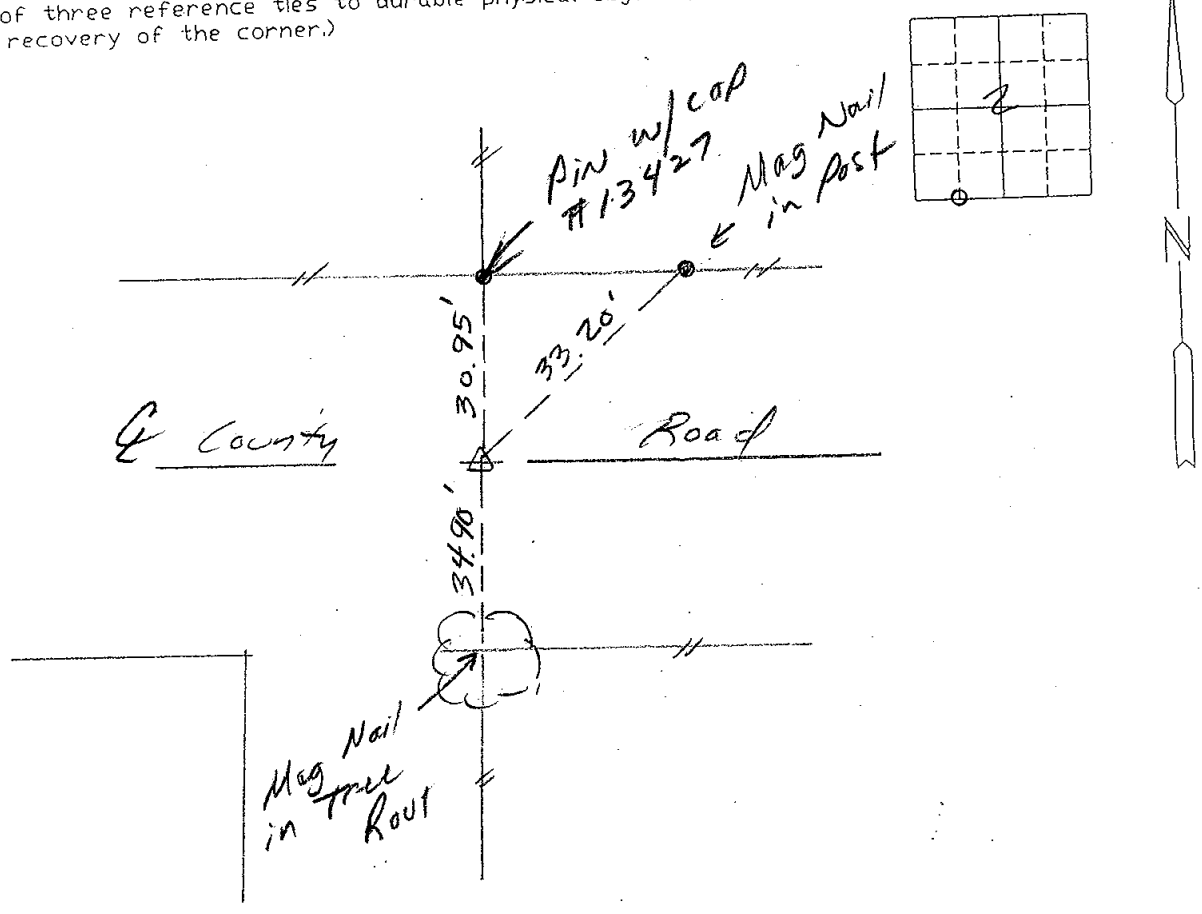
OF 2 Township 77N, Range 27W,
 of the Fifth Principal Meridian, Madison County, Iowa
 Previously recorded in None Recorded in County Recorder's Office.
 (book, page, document number, etc.)

(show reason for preparing this certificate, the evidence and detailed procedures used in establishing the corner positions and monumentation found or placed.)

Monument Description and Remarks: Set track spike in line w/ old N-S fence. Nearly splits 1/2 mile.

PLAN-VIEW

(Show a minimum of three reference ties to durable physical objects, relevant monuments and physical conditions that will enable recovery of the corner.)



SE cor. SW 1/4 SW 1/4

I hereby certify that the survey work was completed and this certificate was prepared by me or under my direct personal supervision and that I am a duly Licensed Land Surveyor under the laws of the State of Iowa

List Corners to be Indexed

Corners Section Twp Range

SE cor SW 1/4 SW 1/4 2-77-27

Signature: Craig S. Boldman
 Craig S. Boldman

Date: 3/12/03 Reg. No. 13427

SEAL

