

REC \$ 5<sup>00</sup>  
 AUD \$             
 R.M.F. \$ 1<sup>00</sup>

FILED NO. **001449**

BOOK **2003** PAGE **1449**

2003 MAR 14 PM 3:43

COMPUTER   
 RECORDED   
 COMPARED

MICKI UTSLER  
 RECORDER  
 MADISON COUNTY, IOWA

RETURN TO : BOLDMAN LAND SURVEYING, P.C., BOX 66, WINTERSSET, IA 50273 515-462-9242  
 UNITED STATES PUBLIC LAND SURVEY CORNER CERTIFICATE

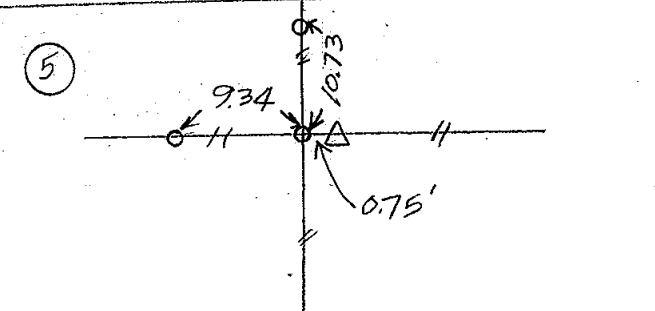
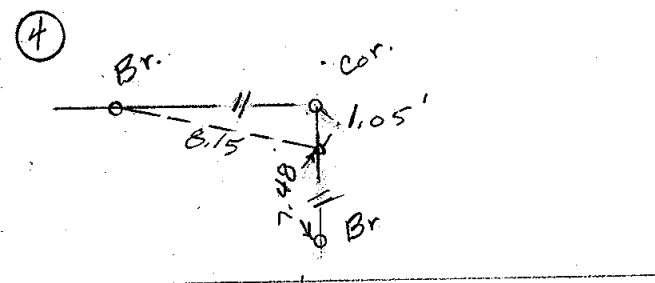
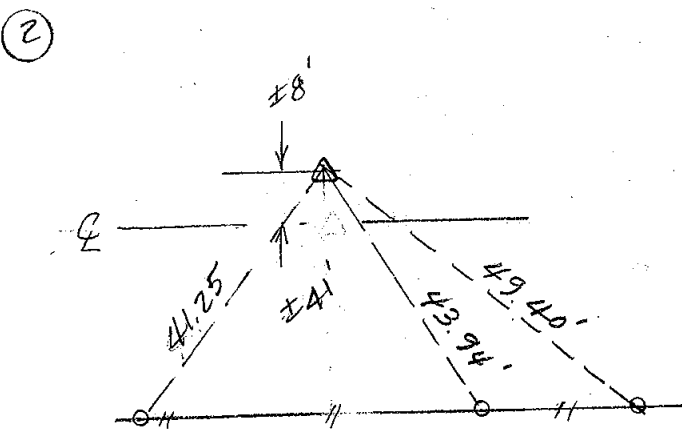
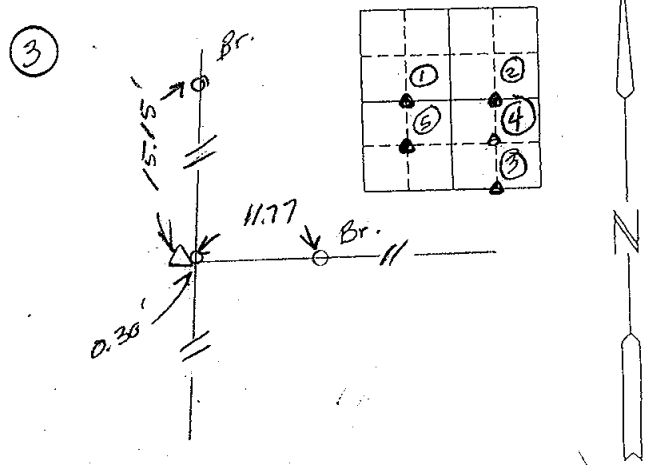
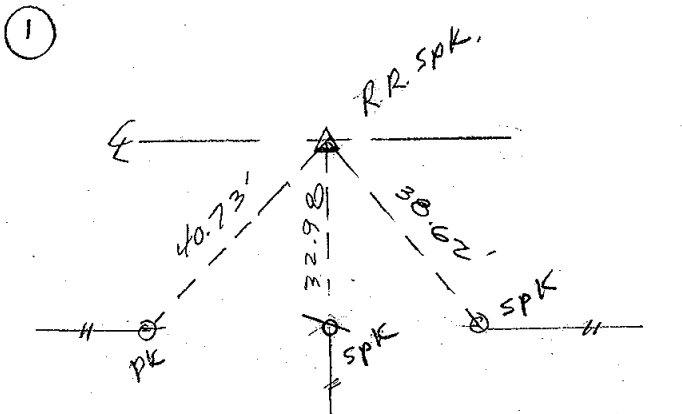
OF 9 Township 75 N., Range           ,  
 Land Survey Monuments situated in Section            of the Fifth Principal Meridian,  
 County, Iowa  
 Previously recorded in No Record in County Recorder's Office.  
 (book, page, document number, etc.)

(show reason for preparing this certificate, the evidence and detailed procedures used in establishing the corner positions and monumentation found or placed.)

Monument Description and Remarks: ① Set track spike in E on N-S Fence ext.  
② Set track spike at midpoint. ③ Set 1/2" Reb. w/cap #13427  
at Cor. Post. ④-⑤ Set 1/2" Reb. w/cap at Calc. Cor's.

PLAN-VIEW

(Show a minimum of three reference ties to durable physical objects, relevant monuments and physical conditions that will enable recovery of the corner.)



I hereby certify that the survey work was completed and this certificate was prepared by me or under my direct personal supervision and that I am a duly Licensed Land Surveyor under the laws of the State of Iowa

List Corners to be Indexed

Corners	Section	Twp	Range
N <sup>1</sup> / <sub>4</sub> SW <sup>1</sup> / <sub>4</sub>	9	75	26
N <sup>1</sup> / <sub>4</sub> SE <sup>1</sup> / <sub>4</sub>	"	"	"
Center SE <sup>1</sup> / <sub>4</sub>	"	"	"
S <sup>1</sup> / <sub>4</sub> SE <sup>1</sup> / <sub>4</sub>	"	"	"
Center SW <sup>1</sup> / <sub>4</sub>	"	"	"

Signature: Craig S. Boldman  
 Craig S. Boldman  
 Date: 3/4/03 Reg. No. 13427

SEAL

