

REC \$ 5⁰⁰
AUD \$
R.M.F. \$

FILED NO. 002037
BOOK 2003 PAGE 2037
2003 APR 10 PM 1:45

COMPUTER
RECORDED
COMPARED

MICKI LUTSLER
515 E. GARDNER
MADISON COUNTY, IOWA

RETURN TO : BOLDMAN LAND SURVEYING, P.C., BOX 66, WINTERSSET, IA 50273
UNITED STATES PUBLIC LAND SURVEY CORNER CERTIFICATE

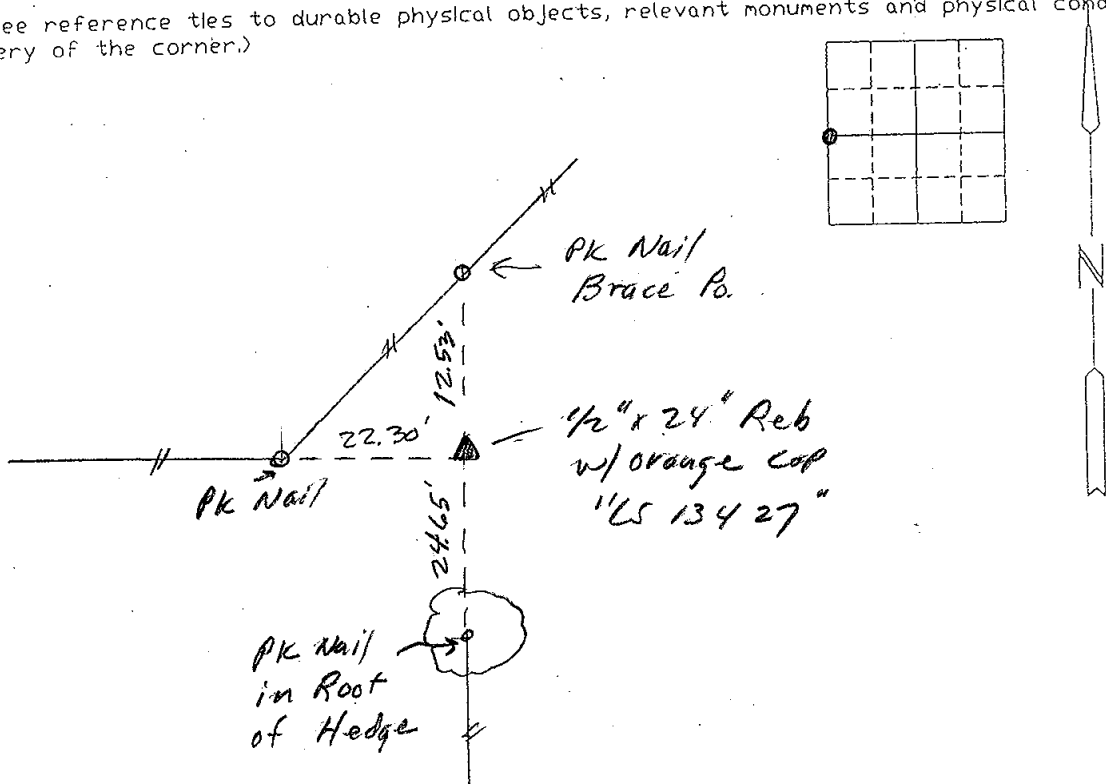
OF 34 Township 74 N, Range
Land Survey Monuments situated in Section 28 W, of the Fifth Principal Meridian, Madison County, Iowa
Previously recorded in None in County Recorder's Office.
(book, page, document number, etc.)

(show reason for preparing this certificate, the evidence and detailed procedures used in establishing the corner positions and monumentation found or placed.)

Monument Description and Remarks: Set from Co. Eagr's Records.

PLAN-VIEW

(Show a minimum of three reference ties to durable physical objects, relevant monuments and physical conditions that will enable recovery of the corner.)



I hereby certify that the survey work was completed and this certificate was prepared by me or under my direct personal supervision and that I am a duly Licensed Land Surveyor under the laws of the State of Iowa

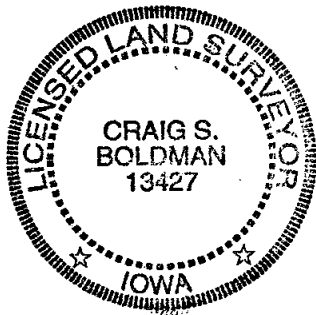
Signature: Craig S. Boldman
Craig S. Boldman

Date: 4/8/03 Reg. No. 13427

List Corners to be Indexed

Corners	Section	Twp	Range
W 1/4 Cor	34	74	28

SEAL



Proj # 03018