

REC \$ NO  
 AUD \$ Fee  
 R.M.F. \$    

COMPUTER   
 RECORDED   
 COMPARED

MICKI UTSLER  
 RECORDER  
 50273, Tel: (515) 462-1136

Prepared By: Michael James Hackett, Madison County Engineer's Office, Courthouse, P.O. Box 152, Winterset, Ia.

## UNITED STATES PUBLIC LAND SURVEY CORNER CERTIFICATE OF

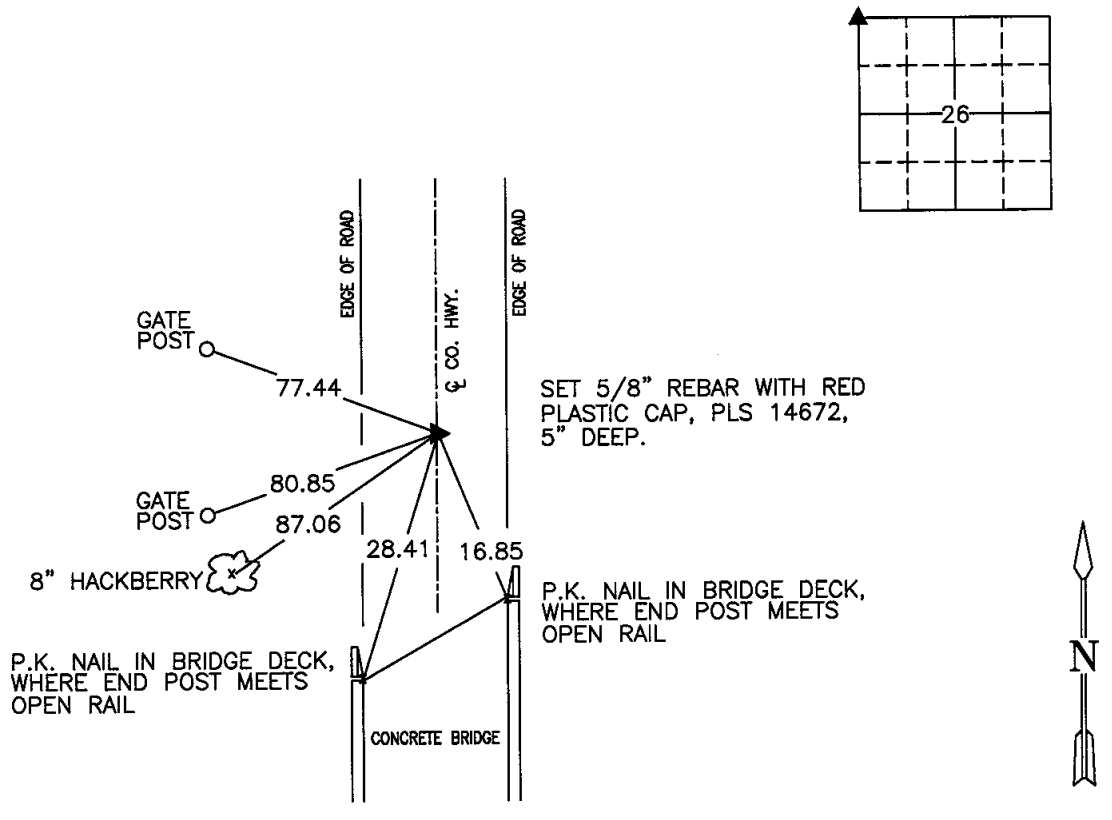
Land Survey Monuments situated in Section 26, Township 76 N, Range 27 W, of the Fifth Principal Meridian, Madison County, Iowa.  
 Previously recorded in Book 1, Page 264, & Book 2003, Page 1729 in County Recorder's Office.  
 (book, page, document number, etc.)

(Show reason for preparing this certificate, the evidence and detailed procedures used in establishing the corner positions and monumentation found or placed.)

Monument Description and Remarks: Previous monument disturbed during construction of bridge. Set 5/8" rebar with red plastic cap, PLS 14672, 5" deep in center of roadway. Established the corner position by using previous ties and the section corners to the north and south. The ties and the section corner information was gathered during bridge construction project BROS-CO(57)--8J-61.

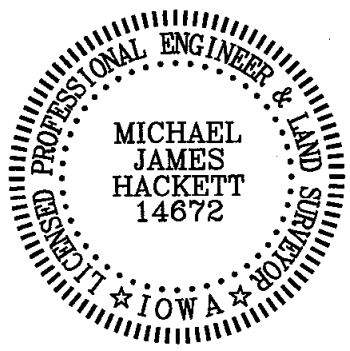
### PLAN VIEW

(Show a minimum of three reference ties to durable physical objects, relevant monuments and physical conditions that will enable recovery of the corner.)



NW. COR., NW. 1/4, SEC. 26

NOTE: ALL TIES TO "X" NAILS UNLESS NOTED



I hereby certify that this land surveying document was prepared and the related survey work was performed by me or under my direct personal supervision and that I am a duly Licensed Land Surveyor under the laws of the State of Iowa.

Signed Michael James Hackett Date 4-8-03  
 Michael James Hackett

Iowa license number 14672.  
 My license renewal date is 12/31/2004.  
 Pages covered by this seal: 1.

BROS-CO(57)--8J-61-1a  
R-17