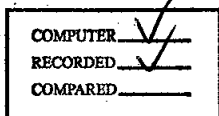


REC \$ 5.00
AUD \$ _____
R.M.F. \$ 1.00



NICKI UTSLER
RECORDER
MADISON COUNTY IOWA
50273 515-462-9242

RETURN TO : BOLDMAN LAND SURVEYING, P.C., BOX 66, WINTERSSET, IA 50273
UNITED STATES PUBLIC LAND SURVEY CORNER CERTIFICATE

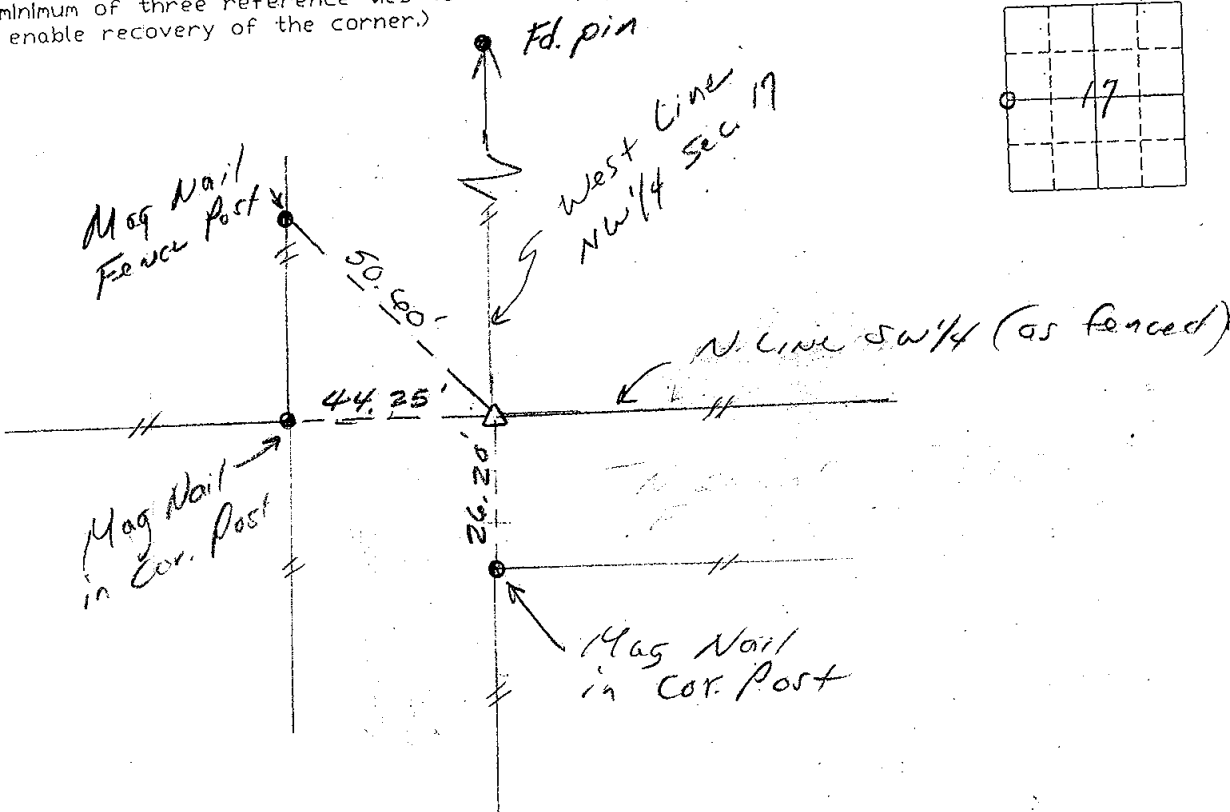
Land Survey Monuments situated in Section 17, Township 77N, Range _____
27W, of the Fifth Principal Meridian, Madison County, Iowa
Previously recorded in No Record in County Recorder's Office.
(book, page, document number, etc.)

(show reason for preparing this certificate, the evidence and detailed procedures used in establishing the corner positions and monumentation found or placed.)

Monument Description and Remarks: Set 1/2" pin w/cap at fence corner based on record information from Road Book B Page 413 and Deed Book 102 Page 403

PLAN-VIEW

(Show a minimum of three reference ties to durable physical objects, relevant monuments and physical conditions that will enable recovery of the corner.)



W 1/4 corner

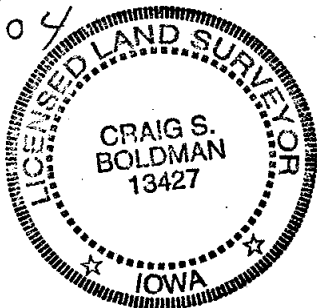
I hereby certify that the survey work was completed and this certificate was prepared by me or under my direct personal supervision and that I am a duly Licensed Land Surveyor under the laws of the State of Iowa

Signature: Craig S. Boldman
Craig S. Boldman

Date: 2/5/03 Reg. No. 13427

Exp. 12/31/04

SEAL



List Corners to be Indexed

Corners	Section	Twp	Range
W 1/4	17	77	27